

Product datasheet for **TA503044AM**

MDS028 (ITFG2) Mouse Monoclonal Antibody (Biotin conjugated) [Clone ID: OTI 2H5]

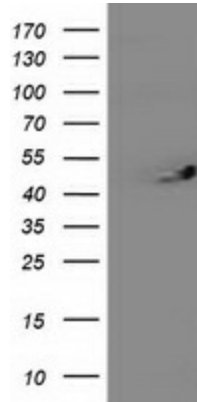
Product data:

| | |
|-------------------------|---|
| Product Type: | Primary Antibodies |
| Clone Name: | OTI 2H5 |
| Applications: | FC, IF, WB |
| Recommended Dilution: | WB 1:2000, IF 1:100, FLOW 1:100 |
| Reactivity: | Human, Mouse, Rat |
| Host: | Mouse |
| Isotype: | IgG1 |
| Clonality: | Monoclonal |
| Immunogen: | Full length human recombinant protein of human ITFG2 (NP_060933) produced in HEK293T cell. |
| Formulation: | PBS (pH 7.3) containing 1% BSA, 50% glycerol and 0.02% sodium azide. |
| Concentration: | 0.5 mg/ml |
| Purification: | Purified from mouse ascites fluids or tissue culture supernatant by affinity chromatography (protein A/G) |
| Conjugation: | Biotin |
| Storage: | Store at -20°C as received. |
| Stability: | Stable for 12 months from date of receipt. |
| Predicted Protein Size: | 49.1 kDa |
| Gene Name: | integrin alpha FG-GAP repeat containing 2 |
| Database Link: | NP_060933 Entrez Gene 362441 RatEntrez Gene 55846 Human Q969R8 |
| Synonyms: | MDS028 |
| Protein Families: | Druggable Genome |

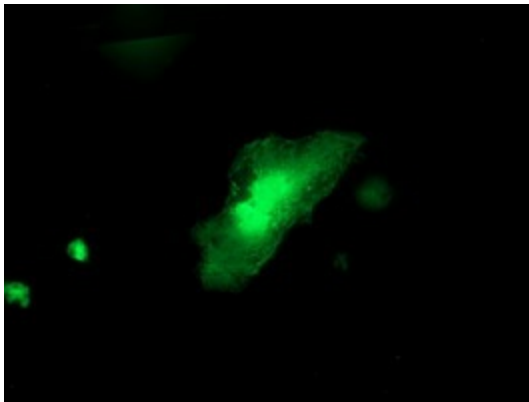


[View online »](#)

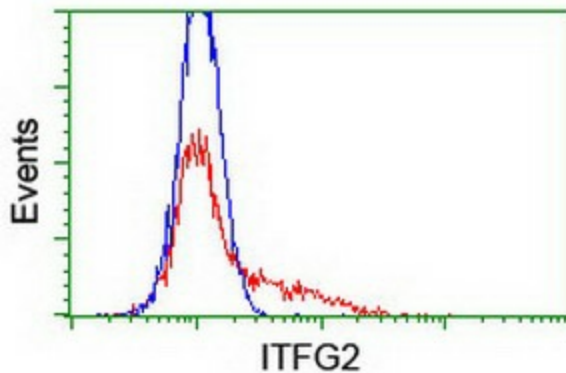
Product images:



HEK293T cells were transfected with the pCMV6-ENTRY control (Left lane) or pCMV6-ENTRY ITFG2 ([RC200818], Right lane) cDNA for 48 hrs and lysed. Equivalent amounts of cell lysates (5 ug per lane) were separated by SDS-PAGE and immunoblotted with anti-ITFG2. Positive lysates [LY413041] (100ug) and [LC413041] (20ug) can be purchased separately from OriGene.



Anti-ITFG2 mouse monoclonal antibody ([TA503044]) immunofluorescent staining of COS7 cells transiently transfected by pCMV6-ENTRY ITFG2 ([RC200818]).



HEK293T cells transfected with either [RC200818] overexpress plasmid (Red) or empty vector control plasmid (Blue) were immunostained by anti-ITFG2 antibody ([TA503044]), and then analyzed by flow cytometry.