

## Product datasheet for **TA503024AM**

### STAT4 Mouse Monoclonal Antibody (Biotin conjugated) [Clone ID: OTI3B6]

#### Product data:

Product Type:	Primary Antibodies
Clone Name:	OTI3B6
Applications:	FC, IF, IHC, WB
Recommended Dilution:	WB 1:2000, IHC 1:150, IF 1:100, FLOW 1:100
Reactivity:	Human, Mouse, Rat
Host:	Mouse
Isotype:	IgG1
Clonality:	Monoclonal
Immunogen:	Full length human recombinant protein of human STAT4(NP_003142) produced in HEK293 cell.
Formulation:	PBS (pH 7.3) containing 1% BSA, 50% glycerol and 0.02% sodium azide.
Concentration:	0.5 mg/ml
Purification:	Purified from mouse ascites fluids or tissue culture supernatant by affinity chromatography (protein A/G)
Conjugation:	Biotin
Storage:	Store at -20°C as received.
Stability:	Stable for 12 months from date of receipt.
Predicted Protein Size:	85.8 kDa
Gene Name:	signal transducer and activator of transcription 4
Database Link:	<a href="#">NP_003142</a> <a href="#">Entrez Gene 20849 Mouse</a> <a href="#">Entrez Gene 367264 Rat</a> <a href="#">Entrez Gene 6775 Human</a> <a href="#">Q14765</a>
Background:	The protein encoded by this gene is a member of the STAT family of transcription factors. In response to cytokines and growth factors, STAT family members are phosphorylated by the receptor associated kinases, and then form homo- or heterodimers that translocate to the cell nucleus where they act as transcription activators. This protein is essential for mediating responses to IL12 in lymphocytes, and regulating the differentiation of T helper cells. [provided by RefSeq]



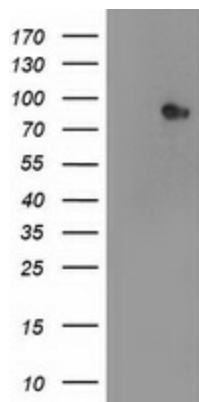
[View online »](#)

**Synonyms:** SLEB11

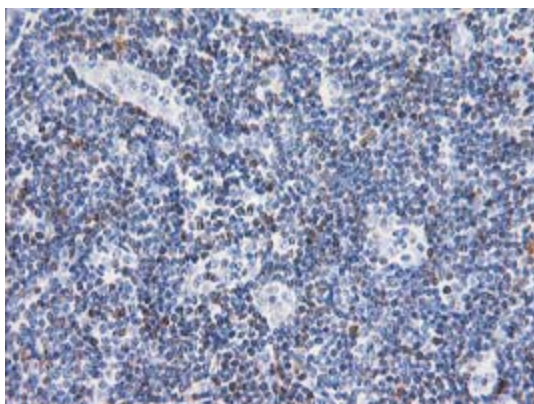
**Protein Families:** Druggable Genome, Transcription Factors

**Protein Pathways:** Jak-STAT signaling pathway

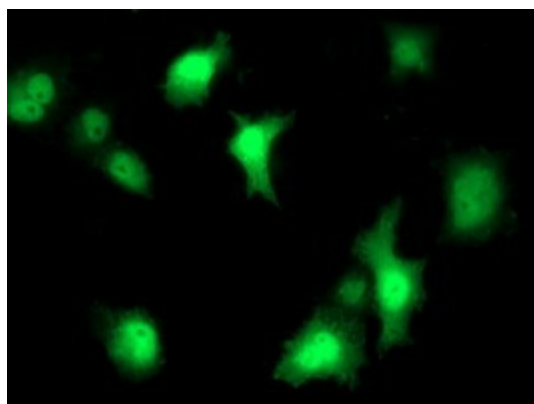
### Product images:



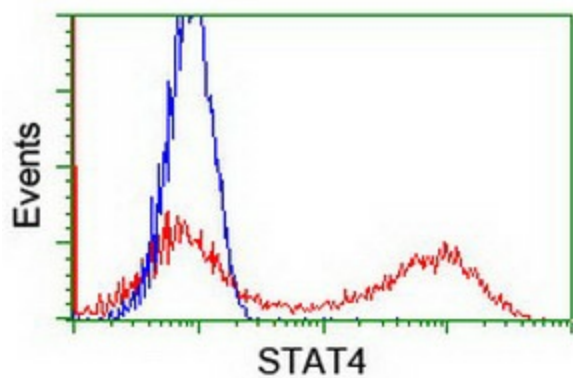
HEK293T cells were transfected with the pCMV6-ENTRY control (Left lane) or pCMV6-ENTRY STAT4 ([RC206892], Right lane) cDNA for 48 hrs and lysed. Equivalent amounts of cell lysates (5 ug per lane) were separated by SDS-PAGE and immunoblotted with anti-STAT4. Positive lysates [LY401095] (100ug) and [LC401095] (20ug) can be purchased separately from OriGene.



Immunohistochemical staining of paraffin-embedded Human lymph node tissue within the normal limits using anti-STAT4 mouse monoclonal antibody. (Heat-induced epitope retrieval by 10mM citric buffer, pH6.0, 100°C for 10min, [TA503024])



Anti-STAT4 mouse monoclonal antibody ([TA503024]) immunofluorescent staining of COS7 cells transiently transfected by pCMV6-ENTRY STAT4 ([RC206892]).



HEK293T cells transfected with either [RC206892] overexpress plasmid (Red) or empty vector control plasmid (Blue) were immunostained by anti-STAT4 antibody ([TA503024]), and then analyzed by flow cytometry.