

Product datasheet for **TA503017AM**

AP2M1 Mouse Monoclonal Antibody (Biotin conjugated) [Clone ID: OTI2G2]

Product data:

Product Type:	Primary Antibodies
Clone Name:	OTI2G2
Applications:	FC, WB
Recommended Dilution:	WB 1:500~2000, FLOW 1:100
Reactivity:	Human, Mouse, Rat
Host:	Mouse
Isotype:	IgG2a
Clonality:	Monoclonal
Immunogen:	Human recombinant protein fragment corresponding to amino acids 97-383 of human AP2M1 (NP_001020376) produced in E.coli.
Formulation:	PBS (pH 7.3) containing 1% BSA, 50% glycerol and 0.02% sodium azide.
Concentration:	0.5 mg/ml
Purification:	Purified from mouse ascites fluids or tissue culture supernatant by affinity chromatography (protein A/G)
Conjugation:	Biotin
Storage:	Store at -20°C as received.
Stability:	Stable for 12 months from date of receipt.
Predicted Protein Size:	49.2 kDa
Gene Name:	adaptor related protein complex 2 subunit mu 1
Database Link:	NP_001020376 Entrez Gene 11773 Mouse Entrez Gene 116563 Rat Entrez Gene 1173 Human Q96CW1



[View online »](#)

Background:

This gene encodes a subunit of the heterotetrameric coat assembly protein complex 2 (AP2), which belongs to the adaptor complexes medium subunits family. The encoded protein is required for the activity of a vacuolar ATPase, which is responsible for proton pumping occurring in the acidification of endosomes and lysosomes. The encoded protein may also play an important role in regulating the intracellular trafficking and function of CTLA-4 protein. Two transcript variants encoding different isoforms have been found for this gene. [provided by RefSeq]

Synonyms:

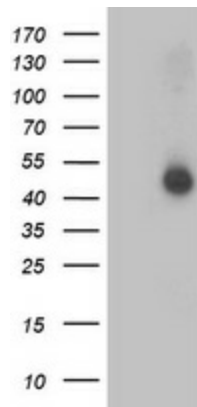
AP50; CLAPM1; mu2

Protein Families:

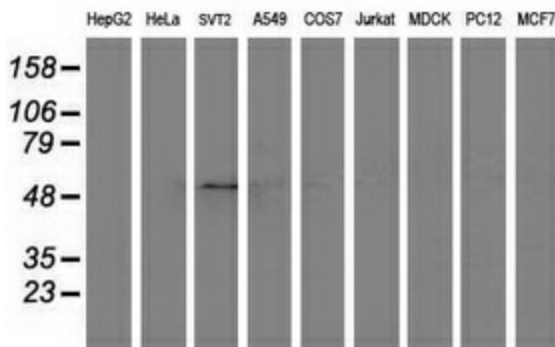
Druggable Genome

Protein Pathways:

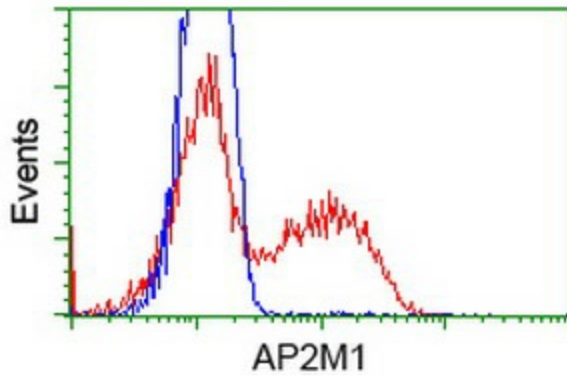
Endocytosis, Huntington's disease

Product images:


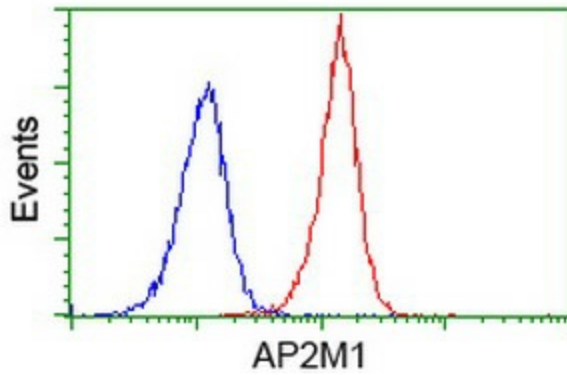
HEK293T cells were transfected with the pCMV6-ENTRY control (Left lane) or pCMV6-ENTRY AP2M1 ([RC201377], Right lane) cDNA for 48 hrs and lysed. Equivalent amounts of cell lysates (5 ug per lane) were separated by SDS-PAGE and immunoblotted with anti-AP2M1. Positive lysates [LY422484] (100ug) and [LC422484] (20ug) can be purchased separately from OriGene.



Western blot analysis of extracts (35ug) from 9 different cell lines by using anti-AP2M1 monoclonal antibody.



HEK293T cells transfected with either [RC201377] overexpress plasmid (Red) or empty vector control plasmid (Blue) were immunostained by anti-AP2M1 antibody ([TA503017]), and then analyzed by flow cytometry.



Flow cytometric Analysis of Jurkat cells, using anti-AP2M1 antibody ([TA503017]), (Red), compared to a nonspecific negative control antibody, (Blue).