

Product datasheet for **TA503007AM**

LIM Kinase 1 (LIMK1) Mouse Monoclonal Antibody (Biotin conjugated) [Clone ID: OTI 7C3]

Product data:

Product Type:	Primary Antibodies
Clone Name:	OTI 7C3
Applications:	FC, IF, WB
Recommended Dilution:	WB 1:2000, IF 1:100, FLOW 1:100
Reactivity:	Human, Mouse, Rat
Host:	Mouse
Isotype:	IgG2b
Clonality:	Monoclonal
Immunogen:	Full length human recombinant protein of human LIMK1 (NP_002305) produced in HEK293T cell.
Formulation:	PBS (pH 7.3) containing 1% BSA, 50% glycerol and 0.02% sodium azide.
Concentration:	0.5 mg/ml
Purification:	Purified from mouse ascites fluids or tissue culture supernatant by affinity chromatography (protein A/G)
Conjugation:	Biotin
Storage:	Store at -20°C as received.
Stability:	Stable for 12 months from date of receipt.
Predicted Protein Size:	72.4 kDa
Gene Name:	LIM domain kinase 1
Database Link:	NP_002305 Entrez Gene 16885 Mouse Entrez Gene 65172 Rat Entrez Gene 3984 Human P53667



[View online »](#)

Background:

There are approximately 40 known eukaryotic LIM proteins, so named for the LIM domains they contain. LIM domains are highly conserved cysteine-rich structures containing 2 zinc fingers. Although zinc fingers usually function by binding to DNA or RNA, the LIM motif probably mediates protein-protein interactions. LIM kinase-1 and LIM kinase-2 belong to a small subfamily with a unique combination of 2 N-terminal LIM motifs and a C-terminal protein kinase domain. LIMK1 is a serine/threonine kinase that regulates actin polymerization via phosphorylation and inactivation of the actin binding factor cofilin. This protein is ubiquitously expressed during development and plays a role in many cellular processes associated with cytoskeletal structure. This protein also stimulates axon growth and may play a role in brain development. LIMK1 hemizygoty is implicated in the impaired visuospatial constructive cognition of Williams syndrome. Alternative splicing results in multiple transcript variants encoding distinct isoforms. [provided by RefSeq, Feb 2011]

Synonyms:

LIMK; LIMK-1

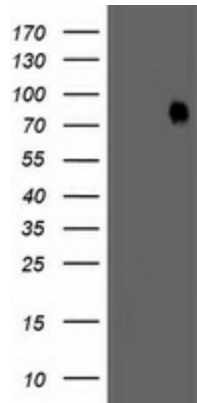
Protein Families:

Druggable Genome, Protein Kinase

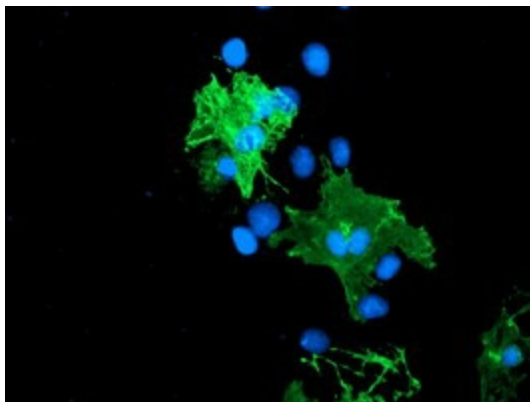
Protein Pathways:

Axon guidance, Fc gamma R-mediated phagocytosis, Regulation of actin cytoskeleton

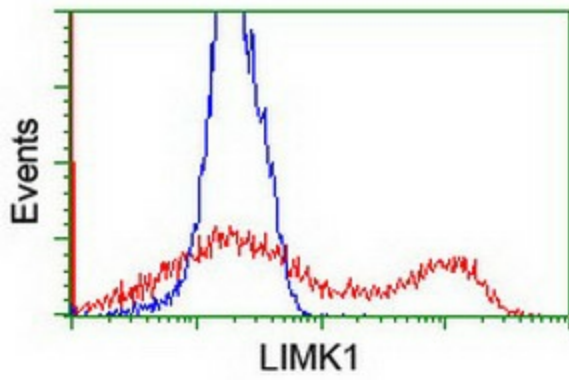
Product images:



HEK293T cells were transfected with the pCMV6-ENTRY control (Left lane) or pCMV6-ENTRY LIMK1 ([RC218058], Right lane) cDNA for 48 hrs and lysed. Equivalent amounts of cell lysates (5 ug per lane) were separated by SDS-PAGE and immunoblotted with anti-LIMK1. Positive lysates [LY400838] (100ug) and [LC400838] (20ug) can be purchased separately from OriGene.



Anti-LIMK1 mouse monoclonal antibody ([TA503007]) immunofluorescent staining of COS7 cells transiently transfected by pCMV6-ENTRY LIMK1 ([RC218058]).



HEK293T cells transfected with either [RC218058] overexpress plasmid (Red) or empty vector control plasmid (Blue) were immunostained by anti-LIMK1 antibody ([TA503007]), and then analyzed by flow cytometry.