

Product datasheet for **TA503002S**

OSGEP Mouse Monoclonal Antibody [Clone ID: OTI9E3]

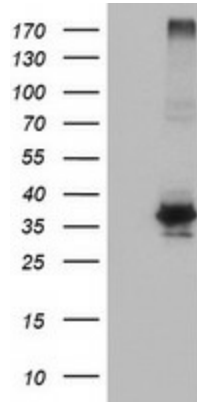
Product data:

Product Type:	Primary Antibodies
Clone Name:	OTI9E3
Applications:	FC, IHC, WB
Recommended Dilution:	WB 1:500~2000, IHC 1:150, FLOW 1:100
Reactivity:	Human, Dog, Rat, Mouse
Host:	Mouse
Isotype:	IgG2a
Clonality:	Monoclonal
Immunogen:	Human recombinant protein fragment corresponding to amino acids 1-335 of human OSGEP(NP_060277) produced in E.coli.
Formulation:	PBS (pH 7.3) containing 1% BSA, 50% glycerol and 0.02% sodium azide.
Concentration:	0.82 mg/ml
Purification:	Purified from mouse ascites fluids or tissue culture supernatant by affinity chromatography (protein A/G)
Conjugation:	Unconjugated
Storage:	Store at -20°C as received.
Stability:	Stable for 12 months from date of receipt.
Predicted Protein Size:	36.2 kDa
Gene Name:	O-sialoglycoprotein endopeptidase
Database Link:	NP_060277 Entrez Gene 66246 Mouse Entrez Gene 290028 Rat Entrez Gene 100687555 Dog Entrez Gene 55644 Human Q9NPF4
Synonyms:	GCPL1; KAE1; OSGEP1; PRSMG1
Protein Families:	Druggable Genome, Protease

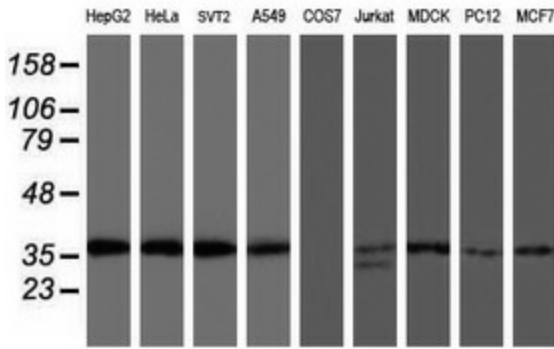


[View online »](#)

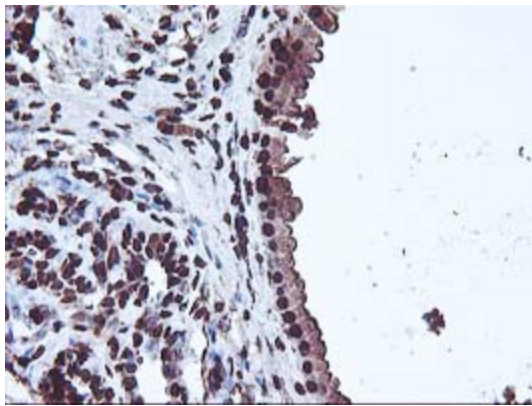
Product images:



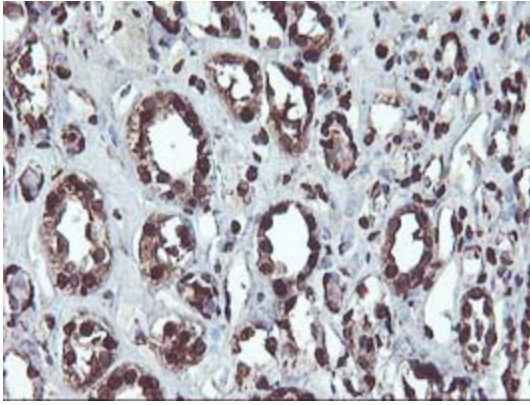
HEK293T cells were transfected with the pCMV6-ENTRY control (Cat# [PS100001], Left lane) or pCMV6-ENTRY OSGEP (Cat# [RC207089], Right lane) cDNA for 48 hrs and lysed. Equivalent amounts of cell lysates (5 ug per lane) were separated by SDS-PAGE and immunoblotted with anti-OSGEP (Cat# [TA503002]). Positive lysates [LY402616] (100ug) and [LC402616] (20ug) can be purchased separately from OriGene.



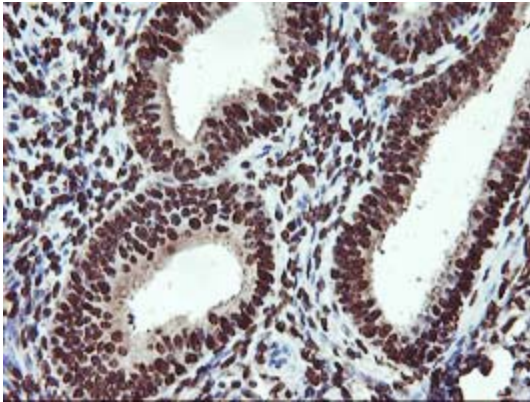
Western blot analysis of extracts (35ug) from 9 different cell lines by using anti-OSGEP monoclonal antibody.



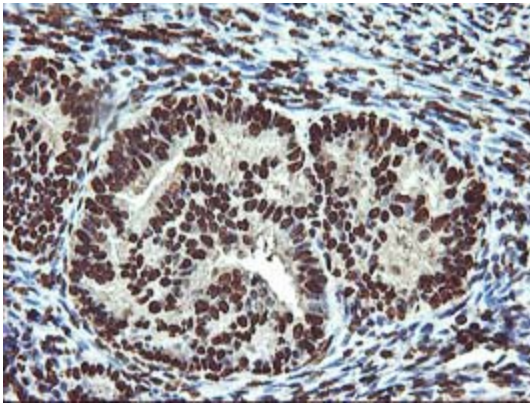
Immunohistochemical staining of paraffin-embedded Human breast tissue within the normal limits using anti-OSGEP mouse monoclonal antibody. (Heat-induced epitope retrieval by 10mM citric buffer, pH6.0, 100°C for 10min, [TA503002])



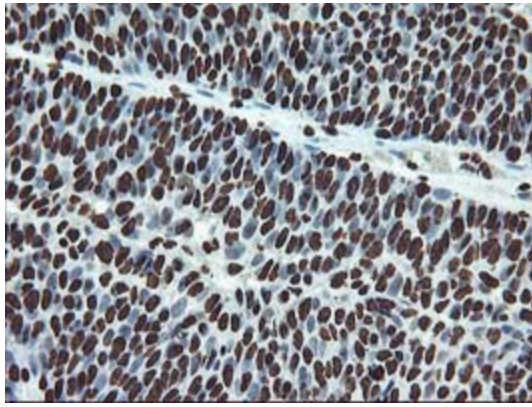
Immunohistochemical staining of paraffin-embedded Human Kidney tissue within the normal limits using anti-OSGEP mouse monoclonal antibody. (Heat-induced epitope retrieval by 10mM citric buffer, pH6.0, 100°C for 10min, [TA503002])



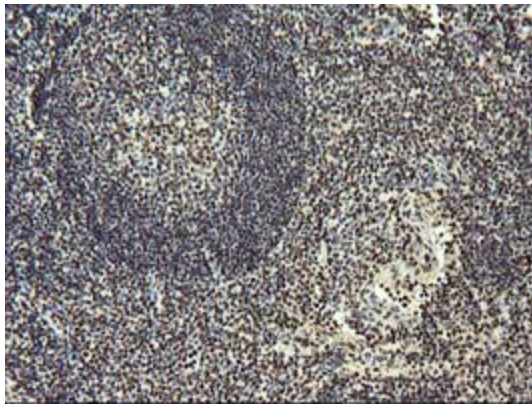
Immunohistochemical staining of paraffin-embedded Human endometrium tissue within the normal limits using anti-OSGEP mouse monoclonal antibody. (Heat-induced epitope retrieval by 10mM citric buffer, pH6.0, 100°C for 10min, [TA503002])



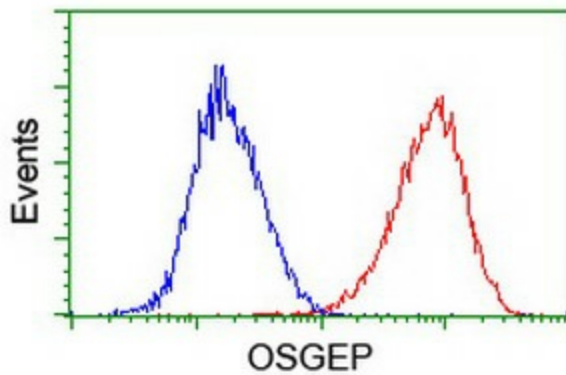
Immunohistochemical staining of paraffin-embedded Adenocarcinoma of Human endometrium tissue using anti-OSGEP mouse monoclonal antibody. (Heat-induced epitope retrieval by 10mM citric buffer, pH6.0, 100°C for 10min, [TA503002])



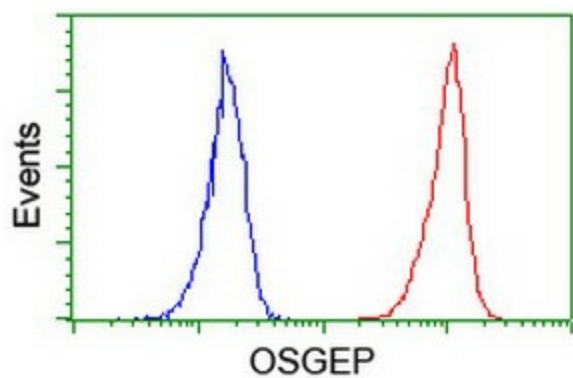
Immunohistochemical staining of paraffin-embedded Carcinoma of Human bladder tissue using anti-OSGEP mouse monoclonal antibody. (Heat-induced epitope retrieval by 10mM citric buffer, pH6.0, 100°C for 10min, [TA503002])



Immunohistochemical staining of paraffin-embedded Human tonsil within the normal limits using anti-OSGEP mouse monoclonal antibody. (Heat-induced epitope retrieval by 10mM citric buffer, pH6.0, 100°C for 10min, [TA503002])



Flow cytometric Analysis of Hela cells, using anti-OSGEP antibody ([TA503002]), (Red), compared to a nonspecific negative control antibody, (Blue).



Flow cytometric Analysis of Jurkat cells, using anti-OSGEP antibody ([TA503002]), (Red), compared to a nonspecific negative control antibody, (Blue).