

Product datasheet for **TA502991**

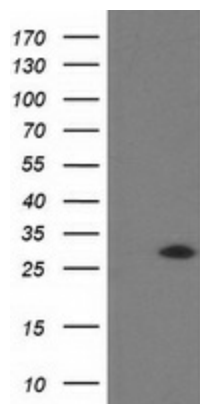
SOCS3 Mouse Monoclonal Antibody [Clone ID: OTI3D3]

Product data:

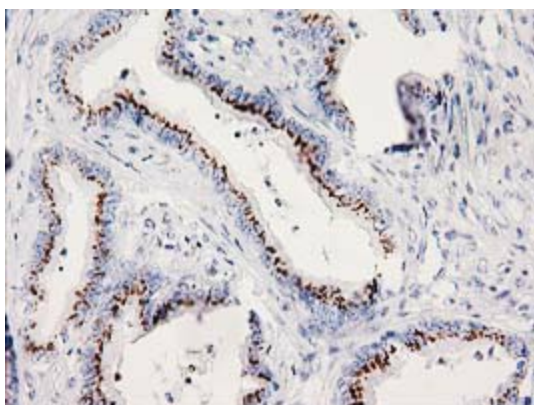
Product Type:	Primary Antibodies
Clone Name:	OTI3D3
Applications:	FC, IF, IHC, WB
Recommend Dilution:	WB 1:2000, IHC 1:150, IF 1:100, FLOW 1:100
Reactivity:	Human
Host:	Mouse
Isotype:	IgG2a
Clonality:	Monoclonal
Immunogen:	Full length human recombinant protein of human SOCS3 (NP_003946) produced in HEK293T cell.
Formulation:	PBS (PH 7.3) containing 1% BSA, 50% glycerol and 0.02% sodium azide.
Concentration:	1 mg/ml
Purification:	Purified from cell culture supernatant by affinity chromatography
Predicted Protein Size:	24.6 kDa
Gene Name:	suppressor of cytokine signaling 3
Database Link:	NP_003946 Entrez Gene 9021 Human
Background:	This gene encodes a member of the STAT-induced STAT inhibitor (SSI), also known as suppressor of cytokine signaling (SOCS), family. SSI family members are cytokine-inducible negative regulators of cytokine signaling. The expression of this gene is induced by various cytokines, including IL6, IL10, and interferon (IFN)-gamma. The protein encoded by this gene can bind to JAK2 kinase, and inhibit the activity of JAK2 kinase. Studies of the mouse counterpart of this gene suggested the roles of this gene in the negative regulation of fetal liver hematopoiesis, and placental development. [provided by RefSeq]
Synonyms:	ATOD4; CIS-3; CIS3; Cish3; MGC71791; SOCS-3; SSI-3; SSI3
Protein Families:	Druggable Genome
Protein Pathways:	Adipocytokine signaling pathway, Insulin signaling pathway, Jak-STAT signaling pathway, Type II diabetes mellitus, Ubiquitin mediated proteolysis



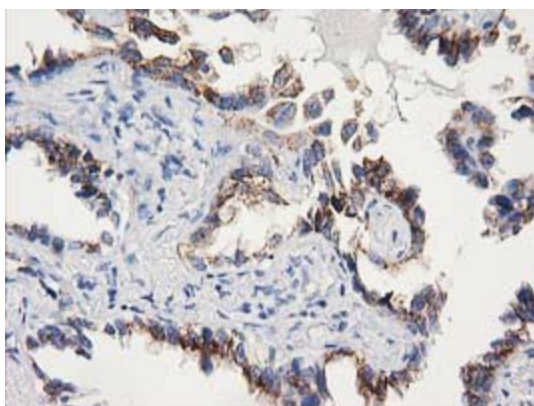
[View online »](#)

Product images:

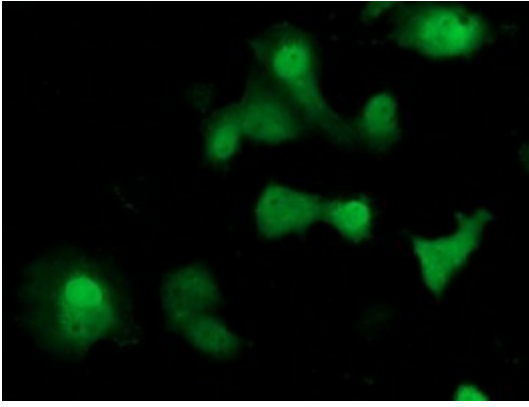
HEK293T cells were transfected with the pCMV6-ENTRY control (Left lane) or pCMV6-ENTRY SOCS3 (RC209305, Right lane) cDNA for 48 hrs and lysed. Equivalent amounts of cell lysates (5 ug per lane) were separated by SDS-PAGE and immunoblotted with anti-SOCS3.



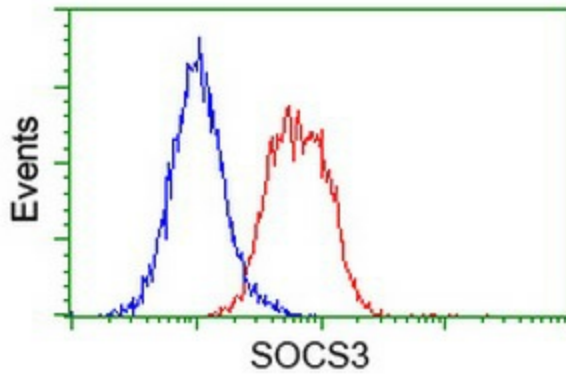
Immunohistochemical staining of paraffin-embedded Adenocarcinoma of Human colon tissue using anti-SOCS3 mouse monoclonal antibody. (Heat-induced epitope retrieval by 10mM citric buffer, pH6.0, 100°C for 10min, TA502991)



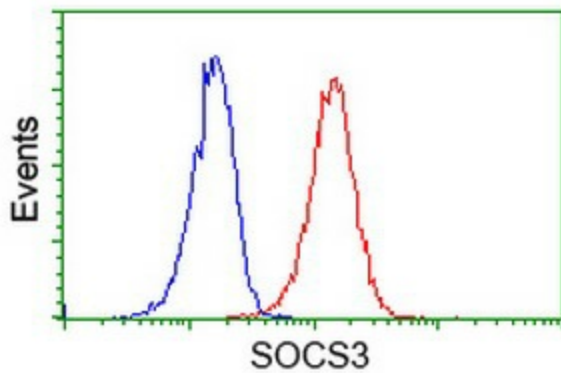
Immunohistochemical staining of paraffin-embedded Carcinoma of Human thyroid tissue using anti-SOCS3 mouse monoclonal antibody. (Heat-induced epitope retrieval by 10mM citric buffer, pH6.0, 100°C for 10min, TA502991)



Anti-SOCS3 mouse monoclonal antibody (TA502991) immunofluorescent staining of COS7 cells transiently transfected by pCMV6-ENTRY SOCS3 (RC209305).



Flow cytometric Analysis of HeLa cells, using anti-SOCS3 antibody (TA502991), (Red), compared to a nonspecific negative control antibody, (Blue).



Flow cytometric Analysis of Jurkat cells, using anti-SOCS3 antibody (TA502991), (Red), compared to a nonspecific negative control antibody, (Blue).