

## Product datasheet for **TA502972BM**

### **PRKAR1B Mouse Monoclonal Antibody (HRP conjugated) [Clone ID: OTI12E5]**

#### **Product data:**

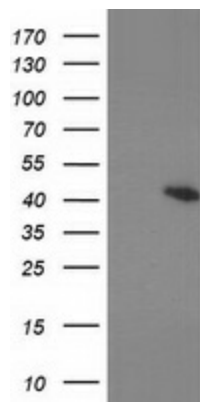
<b>Product Type:</b>	Primary Antibodies
<b>Clone Name:</b>	OTI12E5
<b>Applications:</b>	IF, WB
<b>Recommended Dilution:</b>	WB 1:2000, IF 1:100
<b>Reactivity:</b>	Human, Mouse, Rat
<b>Host:</b>	Mouse
<b>Isotype:</b>	IgG1
<b>Clonality:</b>	Monoclonal
<b>Immunogen:</b>	Full length human recombinant protein of human PRKAR1B (NP_002726) produced in HEK293T cell.
<b>Formulation:</b>	PBS (pH 7.3) containing 1% BSA, 50% glycerol.
<b>Concentration:</b>	0.5 mg/ml
<b>Purification:</b>	Purified from mouse ascites fluids or tissue culture supernatant by affinity chromatography (protein A/G)
<b>Conjugation:</b>	HRP
<b>Storage:</b>	Store at -20°C as received.
<b>Stability:</b>	Stable for 12 months from date of receipt.
<b>Predicted Protein Size:</b>	42.9 kDa
<b>Gene Name:</b>	protein kinase cAMP-dependent type I regulatory subunit beta
<b>Database Link:</b>	<a href="#">NP_002726</a> <a href="#">Entrez Gene 19085 Mouse</a> <a href="#">Entrez Gene 25521 Rat</a> <a href="#">Entrez Gene 5575 Human</a> <a href="#">P31321</a>
<b>Background:</b>	Cyclic AMP-dependent protein kinase A (PKA) is an essential enzyme in the signaling pathway of the second messenger cAMP. Through phosphorylation of target proteins, PKA controls many biochemical events in the cell including regulation of metabolism, ion transport, and gene transcription. The PKA holoenzyme is composed of 2 regulatory and 2 catalytic subunits and dissociates from the regulatory subunits upon binding of cAMP. [supplied by OMIM]



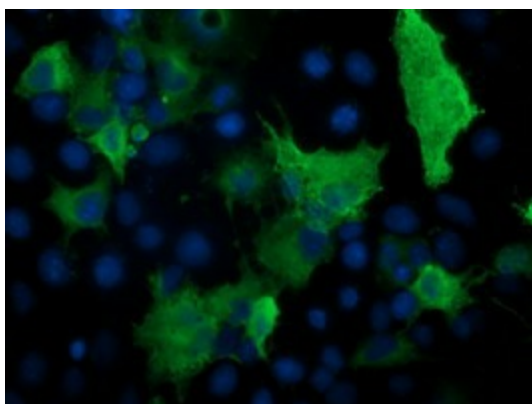
[View online »](#)

**Synonyms:** PRKAR1  
**Protein Families:** Druggable Genome  
**Protein Pathways:** Apoptosis, Insulin signaling pathway

### Product images:



HEK293T cells were transfected with the pCMV6-ENTRY control (Left lane) or pCMV6-ENTRY PRKAR1B ([RC207809], Right lane) cDNA for 48 hrs and lysed. Equivalent amounts of cell lysates (5 ug per lane) were separated by SDS-PAGE and immunoblotted with anti-PRKAR1B. Positive lysates [LY400964] (100ug) and [LC400964] (20ug) can be purchased separately from OriGene.



Anti-PRKAR1B mouse monoclonal antibody ([TA502972]) immunofluorescent staining of COS7 cells transiently transfected by pCMV6-ENTRY PRKAR1B ([RC207809]).