

Product datasheet for **TA502969S**

STAT4 Mouse Monoclonal Antibody [Clone ID: OTI 1H3]

Product data:

Product Type:	Primary Antibodies
Clone Name:	OTI 1H3
Applications:	IF, IHC, WB
Recommended Dilution:	WB 1:2000, IHC 1:150, IF 1:100
Reactivity:	Human, Mouse, Rat
Host:	Mouse
Isotype:	IgG1
Clonality:	Monoclonal
Immunogen:	Full length human recombinant protein of human STAT4 (NP_003142) produced in HEK293T cell.
Formulation:	PBS (pH 7.3) containing 1% BSA, 50% glycerol and 0.02% sodium azide.
Concentration:	0.36 mg/ml
Purification:	Purified from mouse ascites fluids or tissue culture supernatant by affinity chromatography (protein A/G)
Conjugation:	Unconjugated
Storage:	Store at -20°C as received.
Stability:	Stable for 12 months from date of receipt.
Predicted Protein Size:	85.8 kDa
Gene Name:	signal transducer and activator of transcription 4
Database Link:	NP_003142 Entrez Gene 20849 Mouse Entrez Gene 367264 Rat Entrez Gene 6775 Human Q14765



[View online »](#)

Background:

The protein encoded by this gene is a member of the STAT family of transcription factors. In response to cytokines and growth factors, STAT family members are phosphorylated by the receptor associated kinases, and then form homo- or heterodimers that translocate to the cell nucleus where they act as transcription activators. This protein is essential for mediating responses to IL12 in lymphocytes, and regulating the differentiation of T helper cells. Mutations in this gene may be associated with systemic lupus erythematosus and rheumatoid arthritis. Alternate splicing results in multiple transcript variants that encode the same protein. [provided by RefSeq, Aug

Synonyms:

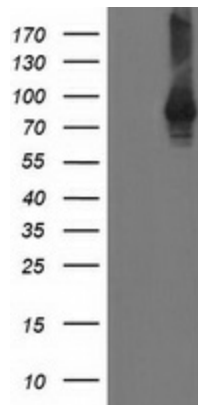
SLEB11

Protein Families:

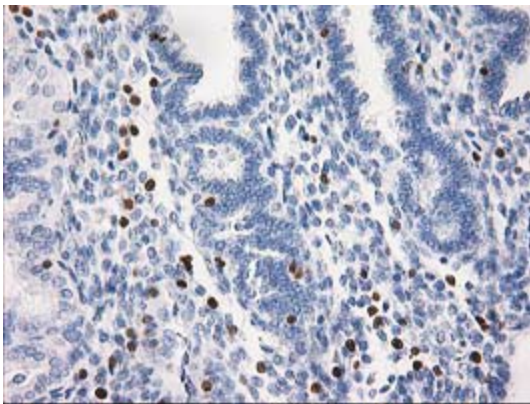
Druggable Genome, Transcription Factors

Protein Pathways:

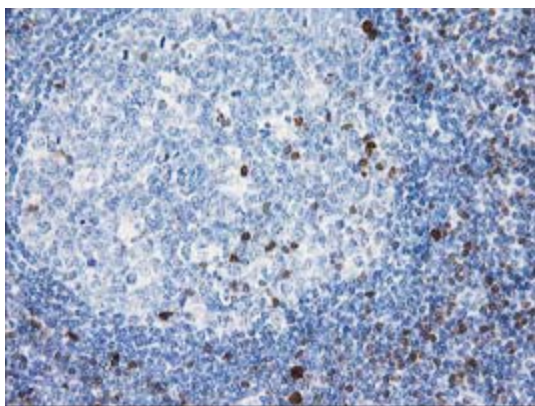
Jak-STAT signaling pathway

Product images:

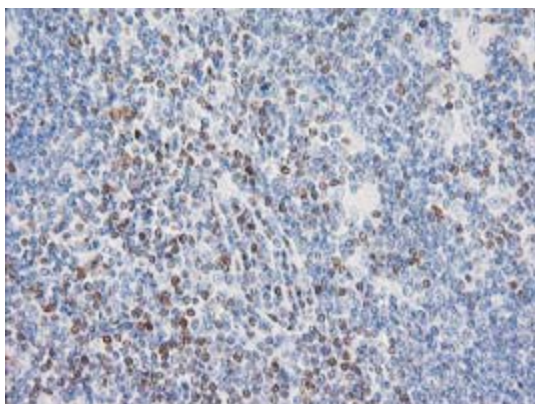
HEK293T cells were transfected with the pCMV6-ENTRY control (Left lane) or pCMV6-ENTRY STAT4 ([RC206892], Right lane) cDNA for 48 hrs and lysed. Equivalent amounts of cell lysates (5 ug per lane) were separated by SDS-PAGE and immunoblotted with anti-STAT4. Positive lysates [LY401095] (100ug) and [LC401095] (20ug) can be purchased separately from OriGene.



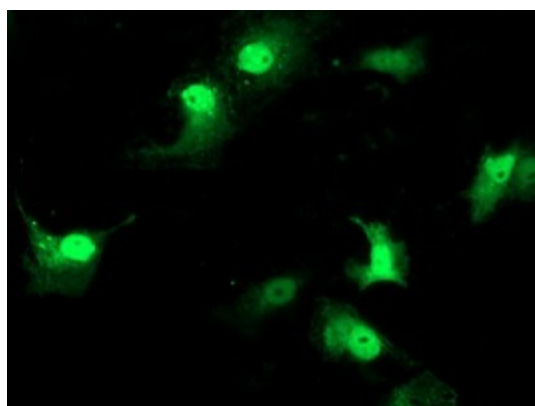
Immunohistochemical staining of paraffin-embedded Human endometrium tissue within the normal limits using anti-STAT4 mouse monoclonal antibody. (Heat-induced epitope retrieval by 10mM citric buffer, pH6.0, 100°C for 10min, [TA502969])



Immunohistochemical staining of paraffin-embedded Human lymph node tissue within the normal limits using anti-STAT4 mouse monoclonal antibody. (Heat-induced epitope retrieval by 10mM citric buffer, pH6.0, 100°C for 10min, [TA502969])



Immunohistochemical staining of paraffin-embedded Human lymphoma tissue using anti-STAT4 mouse monoclonal antibody. (Heat-induced epitope retrieval by 10mM citric buffer, pH6.0, 100°C for 10min, [TA502969])



Anti-STAT4 mouse monoclonal antibody ([TA502969]) immunofluorescent staining of COS7 cells transiently transfected by pCMV6-ENTRY STAT4 ([RC206892]).