

Product datasheet for **TA502957S**

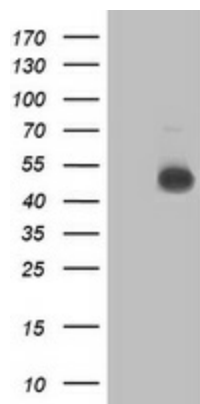
NDUFAF7 Mouse Monoclonal Antibody [Clone ID: OTI6F10]

Product data:

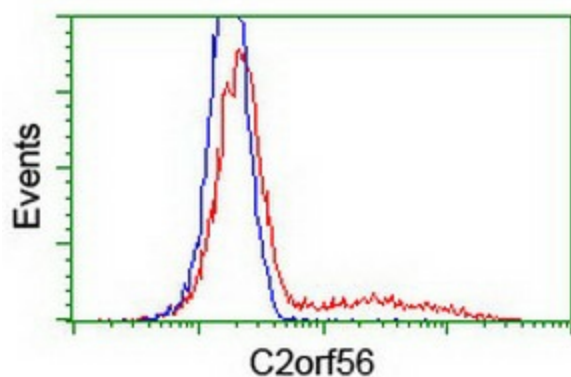
Product Type:	Primary Antibodies
Clone Name:	OTI6F10
Applications:	FC, WB
Recommended Dilution:	WB 1:500, FLOW 1:100
Reactivity:	Human, Mouse
Host:	Mouse
Isotype:	IgG2b
Clonality:	Monoclonal
Immunogen:	Full length human recombinant protein of human C2orf56 (NP_653337) produced in HEK293T cell.
Formulation:	PBS (pH 7.3) containing 1% BSA, 50% glycerol and 0.02% sodium azide.
Concentration:	1 mg/ml
Purification:	Purified from mouse ascites fluids or tissue culture supernatant by affinity chromatography (protein A/G)
Conjugation:	Unconjugated
Storage:	Store at -20°C as received.
Stability:	Stable for 12 months from date of receipt.
Predicted Protein Size:	49.1 kDa
Gene Name:	NADH:ubiquinone oxidoreductase complex assembly factor 7
Database Link:	NP_653337 Entrez Gene 73694 Mouse Entrez Gene 55471 Human Q7L592
Synonyms:	C2orf56; MidA; PRO1853

[View online »](#)

Product images:



HEK293T cells were transfected with the pCMV6-ENTRY control (Left lane) or pCMV6-ENTRY C2orf56 ([RC202529], Right lane) cDNA for 48 hrs and lysed. Equivalent amounts of cell lysates (5 ug per lane) were separated by SDS-PAGE and immunoblotted with anti-C2orf56. Positive lysates [LY403408] (100ug) and [LC403408] (20ug) can be purchased separately from OriGene.



HEK293T cells transfected with either [RC202529] overexpress plasmid (Red) or empty vector control plasmid (Blue) were immunostained by anti-C2orf56 antibody ([TA502957]), and then analyzed by flow cytometry.