

Product datasheet for **TA502948M**

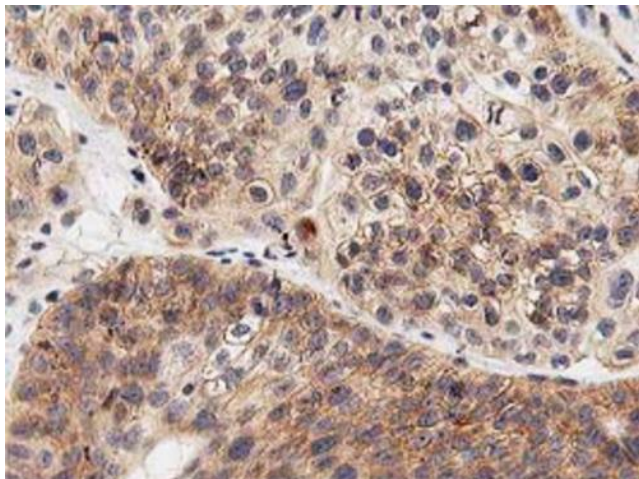
LGR5 Mouse Monoclonal Antibody [Clone ID: OTI2H7]

Product data:

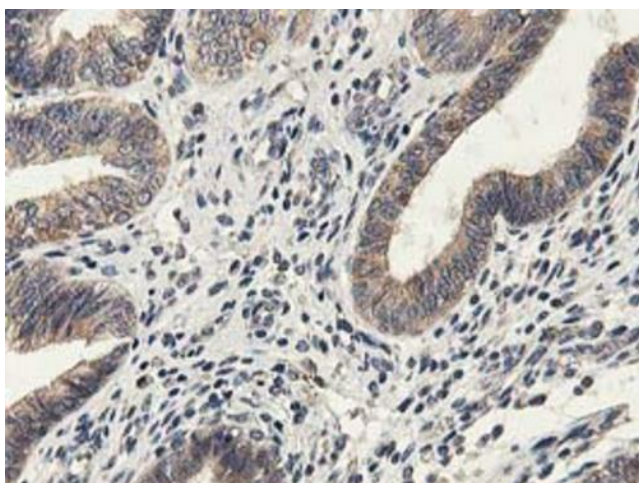
Product Type:	Primary Antibodies
Clone Name:	OTI2H7
Applications:	FC, IF, IHC, WB
Recommended Dilution:	WB 1:500, IHC 1:150
Reactivity:	Human, Mouse, Rat
Host:	Mouse
Isotype:	IgG2a
Clonality:	Monoclonal
Immunogen:	Human recombinant protein fragment corresponding to amino acids 250-550 of human LGR5 (NP_003658) produced in 293T Cell.
Formulation:	PBS (pH 7.3) containing 1% BSA, 50% glycerol and 0.02% sodium azide.
Concentration:	0.72 mg/ml
Purification:	Purified from mouse ascites fluids or tissue culture supernatant by affinity chromatography (protein A/G)
Conjugation:	Unconjugated
Storage:	Store at -20°C as received.
Stability:	Stable for 12 months from date of receipt.
Predicted Protein Size:	99.8 kDa
Gene Name:	leucine rich repeat containing G protein-coupled receptor 5
Database Link:	NP_003658 Entrez Gene 14160 Mouse Entrez Gene 299802 Rat Entrez Gene 8549 Human O75473
Synonyms:	FEX; GPR49; GPR67; GRP49; HG38
Protein Families:	Druggable Genome, GPCR, Transmembrane


[View online »](#)

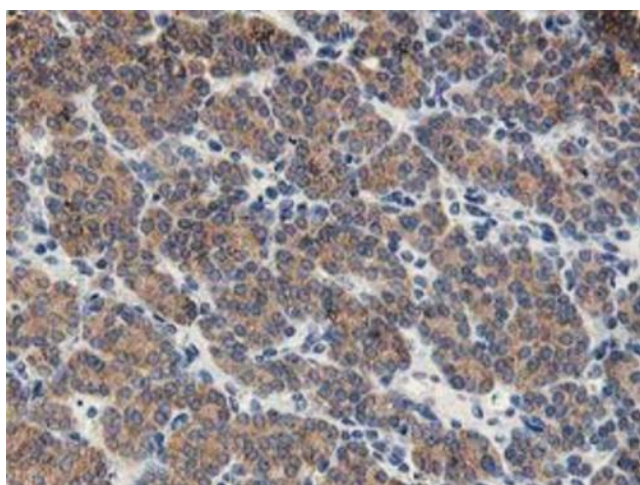
Product images:



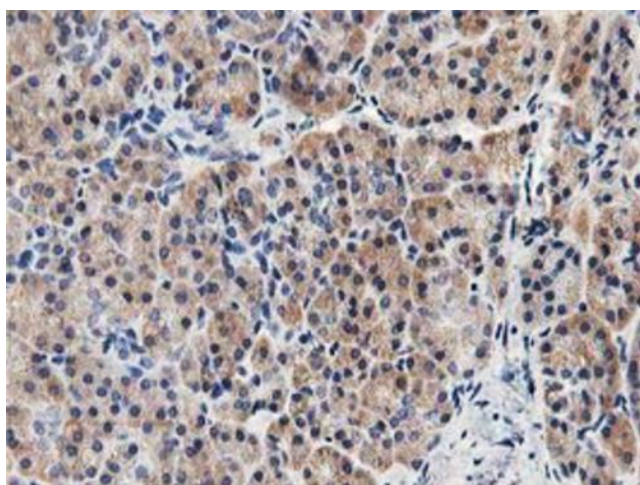
Immunohistochemical staining of paraffin-embedded Carcinoma of Human bladder tissue using anti-LGR5 mouse monoclonal antibody. Heat-induced epitope retrieval by EDTA solution buffer pH 8.0 at 120°C for 3 min.



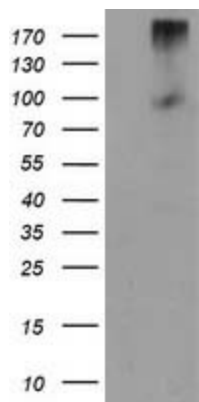
Immunohistochemical staining of paraffin-embedded Adenocarcinoma of Human endometrium tissue using anti-LGR5 mouse monoclonal antibody. Heat-induced epitope retrieval by EDTA solution buffer pH 8.0 at 120°C for 3 min.



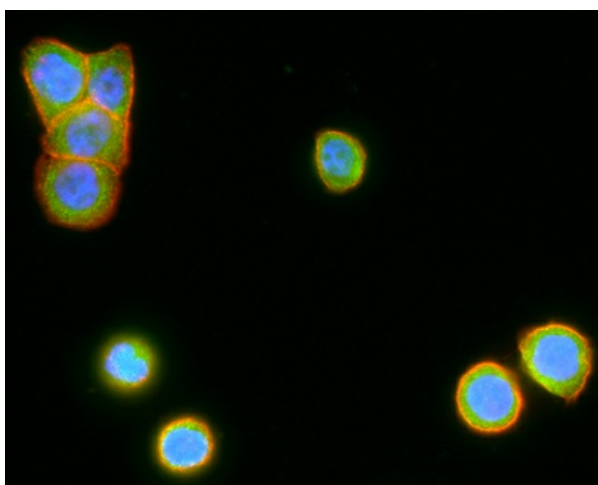
Immunohistochemical staining of paraffin-embedded Carcinoma of Human thyroid tissue using anti-LGR5 mouse monoclonal antibody. Heat-induced epitope retrieval by EDTA solution buffer pH 8.0 at 120°C for 3 min.



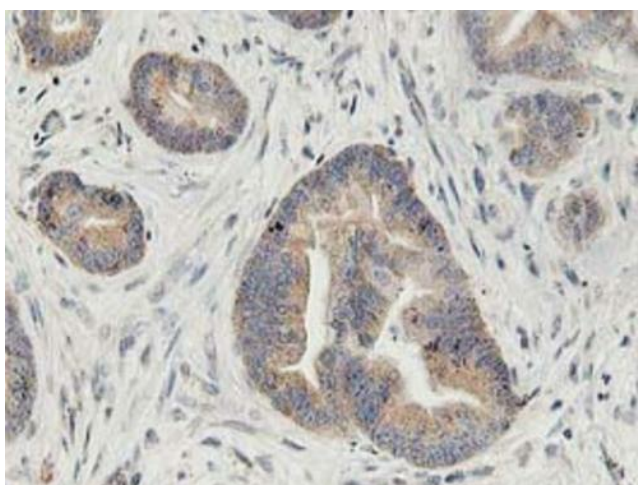
Immunohistochemical staining of paraffin-embedded Human pancreas tissue within the normal limits using anti-LGR5 mouse monoclonal antibody. Heat-induced epitope retrieval by EDTA solution buffer pH 8.0 at 120°C for 3 min.



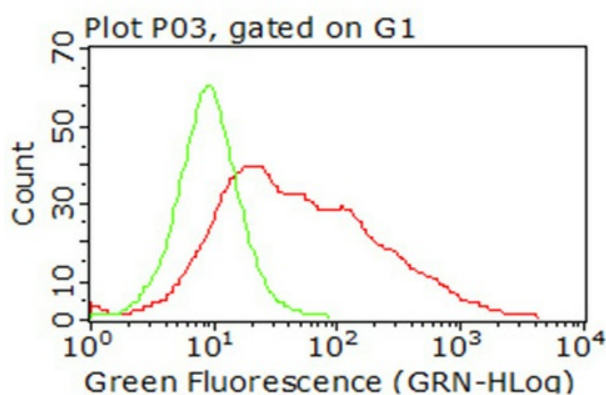
HEK293T cells were transfected with the pCMV6-ENTRY control (Left lane) or pCMV6-ENTRY LGR5 ([RC212825], Right lane) cDNA for 48 hrs and lysed. Equivalent amounts of cell lysates (5 ug per lane) were separated by SDS-PAGE and immunoblotted with anti-LGR5. Positive lysates [LY401213] (100ug) and [LC401213] (20ug) can be purchased separately from OriGene.



Immunofluorescent staining of HT29 cells using anti-LGR5 mouse monoclonal antibody ([TA502948], green). Actin filaments were labeled with TRITC-phalloidin (red), and nuclear with DAPI (blue).



Immunohistochemical staining of paraffin-embedded Adenocarcinoma of Human colon tissue using anti-LGR5 mouse monoclonal antibody. Heat-induced epitope retrieval by EDTA solution buffer pH 8.0 at 120°C for 3 min.



Flow cytometric analysis of living 293T cells transfected with LGR5 overexpression plasmid ([RC212825]), Red) using anti-LGR5 antibody ([TA502948]). Cells incubated with a non-specific antibody (Green) were used as isotype control (1:100).