

Product datasheet for **TA502942S**

NEU2 Mouse Monoclonal Antibody [Clone ID: OTI4F4]

Product data:

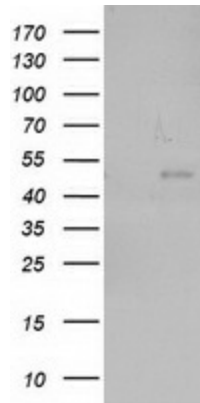
Product Type:	Primary Antibodies
Clone Name:	OTI4F4
Applications:	FC, IF, WB
Recommended Dilution:	WB 1:2000, IF 1:100, FLOW 1:100
Reactivity:	Human
Host:	Mouse
Isotype:	IgG2a
Clonality:	Monoclonal
Immunogen:	Full length human recombinant protein of human NEU2 (NP_005374) produced in HEK293T cell.
Formulation:	PBS (pH 7.3) containing 1% BSA, 50% glycerol and 0.02% sodium azide.
Concentration:	0.65 mg/ml
Purification:	Purified from mouse ascites fluids or tissue culture supernatant by affinity chromatography (protein A/G)
Conjugation:	Unconjugated
Storage:	Store at -20°C as received.
Stability:	Stable for 12 months from date of receipt.
Predicted Protein Size:	42.1 kDa
Gene Name:	neuraminidase 2
Database Link:	NP_005374 Entrez Gene 4759 Human Q9Y3R4
Background:	This gene belongs to a family of glycohydrolytic enzymes which remove sialic acid residues from glycoproteins and glycolipids. Expression studies in COS7 cells confirmed that this gene encodes a functional sialidase. Its cytosolic localization was demonstrated by cell fractionation experiments. [provided by RefSeq]
Synonyms:	SIAL2



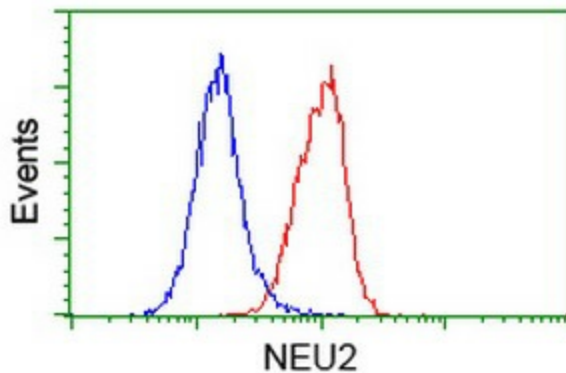
[View online »](#)

Protein Pathways: Other glycan degradation, Sphingolipid metabolism

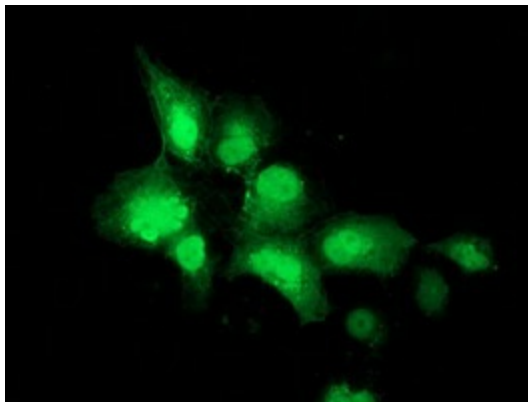
Product images:



HEK293T cells were transfected with the pCMV6-ENTRY control (Cat# [PS100001], Left lane) or pCMV6-ENTRY NEU2 (Cat# [RC219858], Right lane) cDNA for 48 hrs and lysed. Equivalent amounts of cell lysates (5 ug per lane) were separated by SDS-PAGE and immunoblotted with anti-NEU2(Cat# [TA502942]). Positive lysates [LY401652] (100ug) and [LC401652] (20ug) can be purchased separately from OriGene.



Flow cytometric Analysis of Hela cells, using anti-NEU2 antibody ([TA502942]), (Red), compared to a nonspecific negative control antibody (TA50011), (Blue).



Anti-NEU2 mouse monoclonal antibody ([TA502942]) immunofluorescent staining of COS7 cells transiently transfected by pCMV6-ENTRY NEU2 ([RC219858]).