

## Product datasheet for **TA502942AM**

### NEU2 Mouse Monoclonal Antibody (Biotin conjugated) [Clone ID: OTI4F4]

#### Product data:

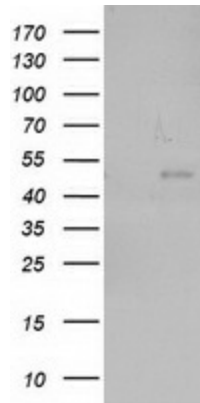
|                         |  |
|-------------------------|--|
| Product Type:           | Primary Antibodies   |
| Clone Name:             | OTI4F4   |
| Applications:           | FC, IF, WB   |
| Recommended Dilution:   | WB 1:2000, IF 1:100, FLOW 1:100  |
| Reactivity:             | Human  |
| Host:                   | Mouse  |
| Isotype:                | IgG2a  |
| Clonality:              | Monoclonal   |
| Immunogen:              | Full length human recombinant protein of human NEU2 (NP_005374) produced in HEK293T cell.  |
| Formulation:            | PBS (pH 7.3) containing 1% BSA, 50% glycerol and 0.02% sodium azide.   |
| Concentration:          | 0.5 mg/ml  |
| Purification:           | Purified from mouse ascites fluids or tissue culture supernatant by affinity chromatography (protein A/G)  |
| Conjugation:            | Biotin   |
| Storage:                | Store at -20°C as received.  |
| Stability:              | Stable for 12 months from date of receipt.   |
| Predicted Protein Size: | 42.1 kDa   |
| Gene Name:              | neuraminidase 2  |
| Database Link:          | <a href="#">NP_005374</a><br><a href="#">Entrez Gene 4759 Human</a><br><a href="#">Q9Y3R4</a>  |
| Background:             | This gene belongs to a family of glycohydrolytic enzymes which remove sialic acid residues from glycoproteins and glycolipids. Expression studies in COS7 cells confirmed that this gene encodes a functional sialidase. Its cytosolic localization was demonstrated by cell fractionation experiments. [provided by RefSeq] |
| Synonyms:               | SIAL2  |



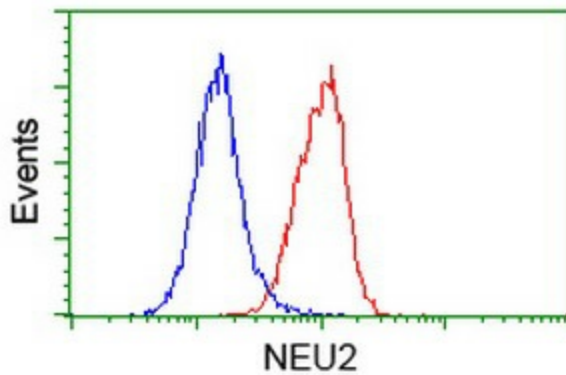
[View online »](#)

Protein Pathways: Other glycan degradation, Sphingolipid metabolism

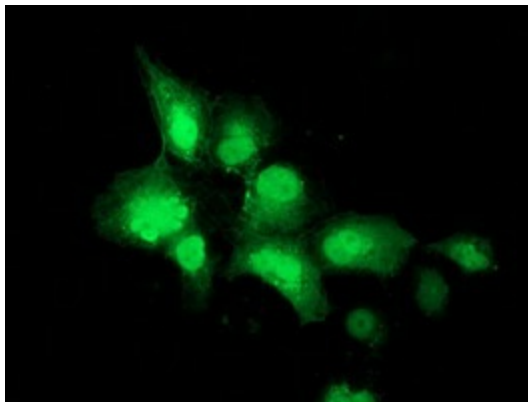
**Product images:**



HEK293T cells were transfected with the pCMV6-ENTRY control (Cat# [PS100001], Left lane) or pCMV6-ENTRY NEU2 (Cat# [RC219858], Right lane) cDNA for 48 hrs and lysed. Equivalent amounts of cell lysates (5 ug per lane) were separated by SDS-PAGE and immunoblotted with anti-NEU2(Cat# [TA502942]). Positive lysates [LY401652] (100ug) and [LC401652] (20ug) can be purchased separately from OriGene.



Flow cytometric Analysis of Hela cells, using anti-NEU2 antibody ([TA502942]), (Red), compared to a nonspecific negative control antibody (TA50011), (Blue).



Anti-NEU2 mouse monoclonal antibody ([TA502942]) immunofluorescent staining of COS7 cells transiently transfected by pCMV6-ENTRY NEU2 ([RC219858]).