

Product datasheet for **TA502937S**

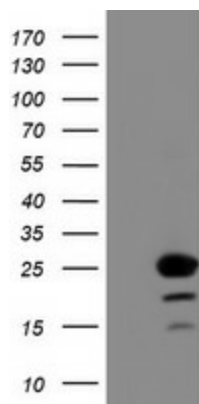
C1orf50 Mouse Monoclonal Antibody [Clone ID: OTI1C6]

Product data:

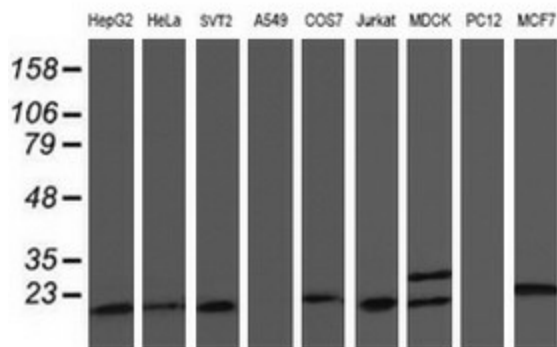
Product Type:	Primary Antibodies
Clone Name:	OTI1C6
Applications:	FC, IF, IHC, WB
Recommended Dilution:	WB 1:500~1000, IHC 1:150, IF 1:100, FLOW 1:100
Reactivity:	Human, Dog, Monkey, Mouse
Host:	Mouse
Isotype:	IgG2a
Clonality:	Monoclonal
Immunogen:	Full length human recombinant protein of human (NP_077002) produced in HEK293T cell.
Formulation:	PBS (pH 7.3) containing 1% BSA, 50% glycerol and 0.02% sodium azide.
Concentration:	1.21 mg/ml
Purification:	Purified from mouse ascites fluids or tissue culture supernatant by affinity chromatography (protein A/G)
Conjugation:	Unconjugated
Storage:	Store at -20°C as received.
Stability:	Stable for 12 months from date of receipt.
Predicted Protein Size:	21.7 kDa
Gene Name:	chromosome 1 open reading frame 50
Database Link:	NP_077002 Entrez Gene 79078 Human Q9BV19
Synonyms:	MGC955



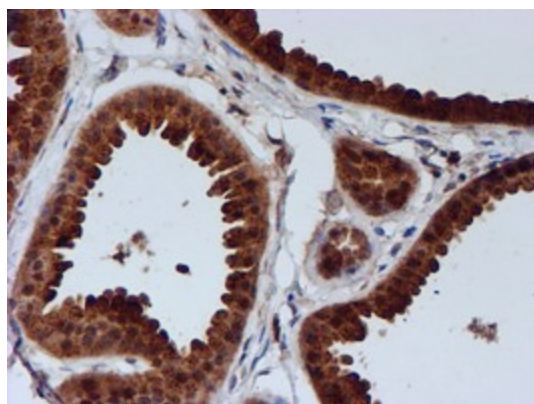
[View online »](#)

Product images:


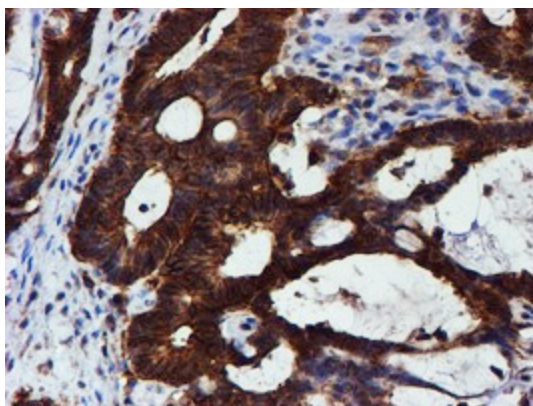
HEK293T cells were transfected with the pCMV6-ENTRY control (Cat# [PS100001], Left lane) or pCMV6-ENTRY C1orf50 (Cat# [RC200134], Right lane) cDNA for 48 hrs and lysed. Equivalent amounts of cell lysates (5 ug per lane) were separated by SDS-PAGE and immunoblotted with anti-C1orf50 (Cat# [TA502937]). Positive lysates [LY411368] (100ug) and [LC411368] (20ug) can be purchased separately from OriGene.



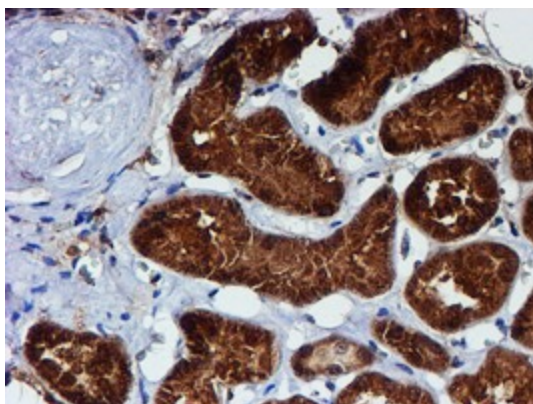
Western blot analysis of extracts (35ug) from 9 different cell lines by using anti-C1orf50 monoclonal antibody.



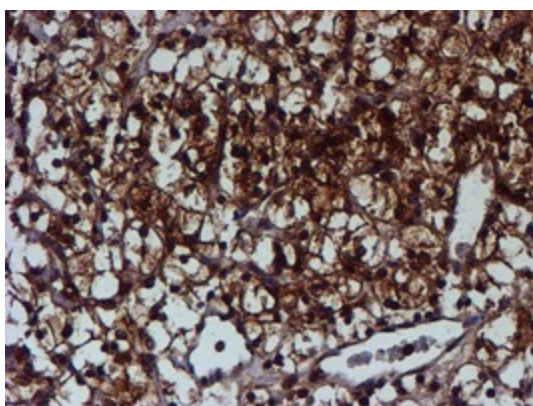
Immunohistochemical staining of paraffin-embedded Human breast tissue within the normal limits using anti-C1orf50 mouse monoclonal antibody. (Heat-induced epitope retrieval by 10mM citric buffer, pH6.0, 100°C for 10min, [TA502937])



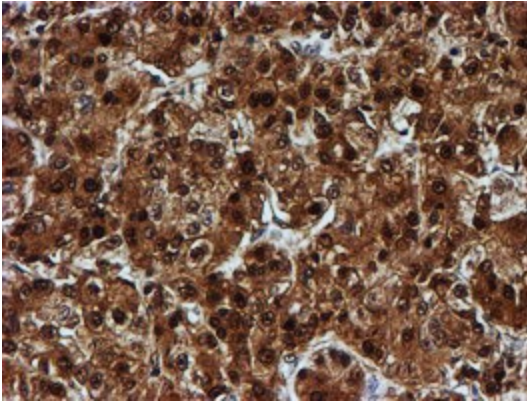
Immunohistochemical staining of paraffin-embedded Adenocarcinoma of Human colon tissue using anti-C1orf50 mouse monoclonal antibody. (Heat-induced epitope retrieval by 10mM citric buffer, pH6.0, 100°C for 10min, [TA502937])



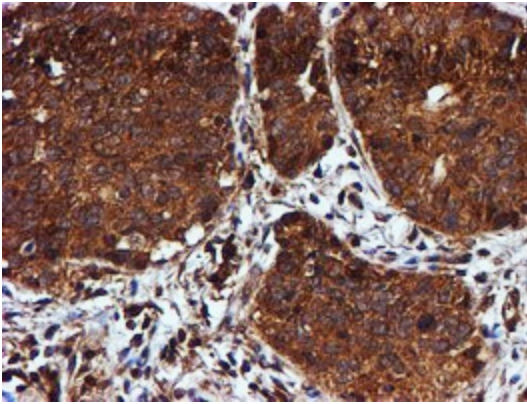
Immunohistochemical staining of paraffin-embedded Human Kidney tissue within the normal limits using anti-C1orf50 mouse monoclonal antibody. (Heat-induced epitope retrieval by 10mM citric buffer, pH6.0, 100°C for 10min, [TA502937])



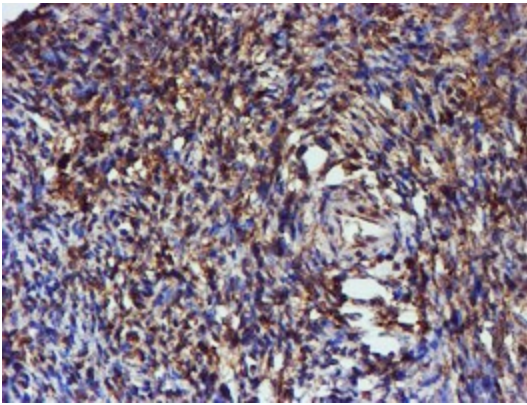
Immunohistochemical staining of paraffin-embedded Carcinoma of Human kidney tissue using anti-C1orf50 mouse monoclonal antibody. (Heat-induced epitope retrieval by 10mM citric buffer, pH6.0, 100°C for 10min, [TA502937])



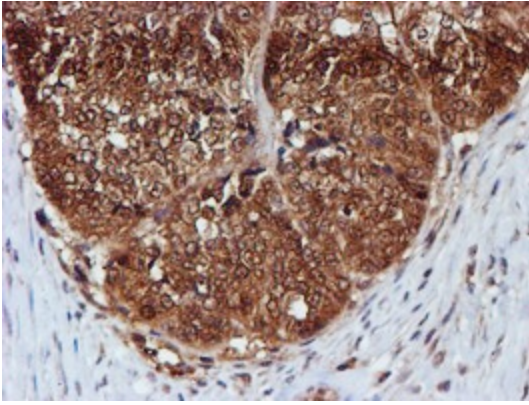
Immunohistochemical staining of paraffin-embedded Carcinoma of Human liver tissue using anti-C1orf50 mouse monoclonal antibody. (Heat-induced epitope retrieval by 10mM citric buffer, pH6.0, 100°C for 10min, [TA502937])



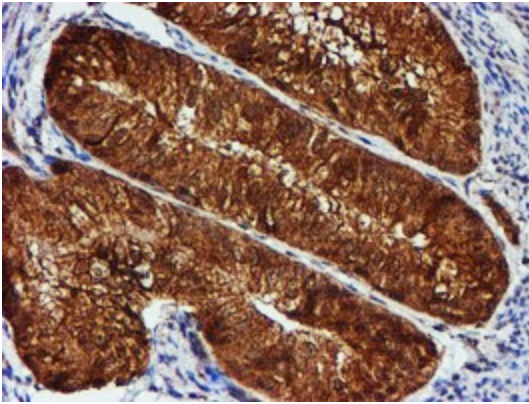
Immunohistochemical staining of paraffin-embedded Carcinoma of Human lung tissue using anti-C1orf50 mouse monoclonal antibody. (Heat-induced epitope retrieval by 10mM citric buffer, pH6.0, 100°C for 10min, [TA502937])



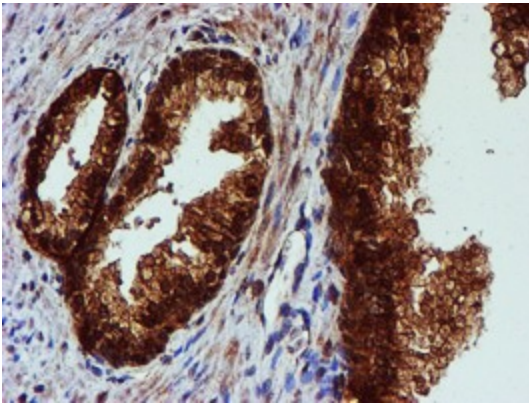
Immunohistochemical staining of paraffin-embedded Human Ovary tissue within the normal limits using anti-C1orf50 mouse monoclonal antibody. (Heat-induced epitope retrieval by 10mM citric buffer, pH6.0, 100°C for 10min, [TA502937])



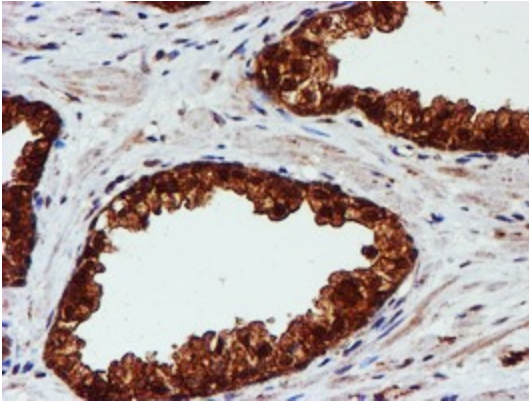
Immunohistochemical staining of paraffin-embedded Adenocarcinoma of Human ovary tissue using anti-C1orf50 mouse monoclonal antibody. (Heat-induced epitope retrieval by 10mM citric buffer, pH6.0, 100°C for 10min, [TA502937])



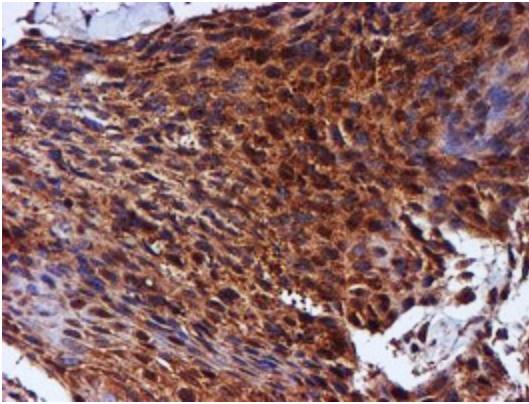
Immunohistochemical staining of paraffin-embedded Adenocarcinoma of Human endometrium tissue using anti-C1orf50 mouse monoclonal antibody. (Heat-induced epitope retrieval by 10mM citric buffer, pH6.0, 100°C for 10min, [TA502937])



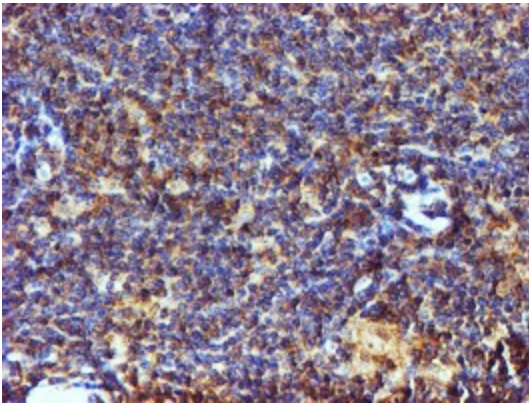
Immunohistochemical staining of paraffin-embedded Human prostate tissue within the normal limits using anti-C1orf50 mouse monoclonal antibody. (Heat-induced epitope retrieval by 10mM citric buffer, pH6.0, 100°C for 10min, [TA502937])



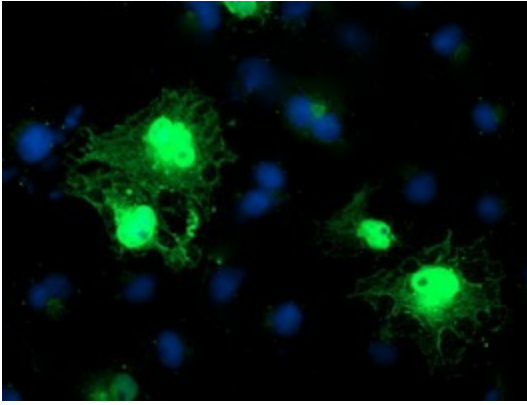
Immunohistochemical staining of paraffin-embedded Carcinoma of Human prostate tissue using anti-C1orf50 mouse monoclonal antibody. (Heat-induced epitope retrieval by 10mM citric buffer, pH6.0, 100°C for 10min, [TA502937])



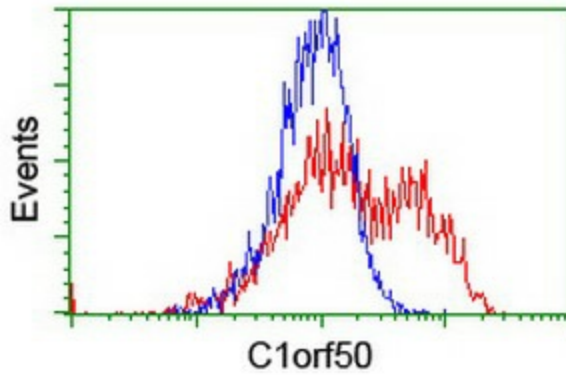
Immunohistochemical staining of paraffin-embedded Carcinoma of Human bladder tissue using anti-C1orf50 mouse monoclonal antibody. (Heat-induced epitope retrieval by 10mM citric buffer, pH6.0, 100°C for 10min, [TA502937])



Immunohistochemical staining of paraffin-embedded Human Lymphoma tissue using anti-C1orf50 mouse monoclonal antibody. (Heat-induced epitope retrieval by 10mM citric buffer, pH6.0, 100°C for 10min, [TA502937])



Anti-C1orf50 mouse monoclonal antibody ([TA502937]) immunofluorescent staining of COS7 cells transiently transfected by pCMV6-ENTRY C1orf50 ([RC200134]).



HEK293T cells transfected with either [RC200134] overexpress plasmid (Red) or empty vector control plasmid (Blue) were immunostained by anti-C1orf50 antibody ([TA502937]), and then analyzed by flow cytometry.