

## Product datasheet for **TA502931**

### Monoacylglycerol Lipase (MGLL) Mouse Monoclonal Antibody [Clone ID: OTI2C9]

#### Product data:

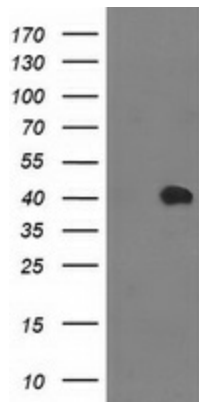
Product Type:	Primary Antibodies
Clone Name:	OTI2C9
Applications:	FC, IHC, WB
Recommended Dilution:	WB 1:2000, IHC 1:150, FLOW 1:100
Reactivity:	Human
Host:	Mouse
Isotype:	IgG2b
Clonality:	Monoclonal
Immunogen:	Full length human recombinant protein of human MGLL (NP_009214) produced in HEK293T cell.
Formulation:	PBS (pH 7.3) containing 1% BSA, 50% glycerol and 0.02% sodium azide.
Concentration:	0.23 mg/ml
Purification:	Purified from mouse ascites fluids or tissue culture supernatant by affinity chromatography (protein A/G)
Conjugation:	Unconjugated
Storage:	Store at -20°C as received.
Stability:	Stable for 12 months from date of receipt.
Predicted Protein Size:	34.1 kDa
Gene Name:	monoglyceride lipase
Database Link:	<a href="#">NP_009214</a> <a href="#">Entrez Gene 11343 Human</a> <a href="#">Q99685</a>
Background:	Monoglyceride lipase (MGLL; EC 3.1.1.23) functions together with hormone-sensitive lipase (LIPe; MIM 151750) to hydrolyze intracellular triglyceride stores in adipocytes and other cells to fatty acids and glycerol. MGLL may also complement lipoprotein lipase (LPL; MIM 238600) in completing hydrolysis of monoglycerides resulting from degradation of lipoprotein triglycerides (Karlsson et al., 2001 [PubMed 11470505]). [supplied by OMIM]



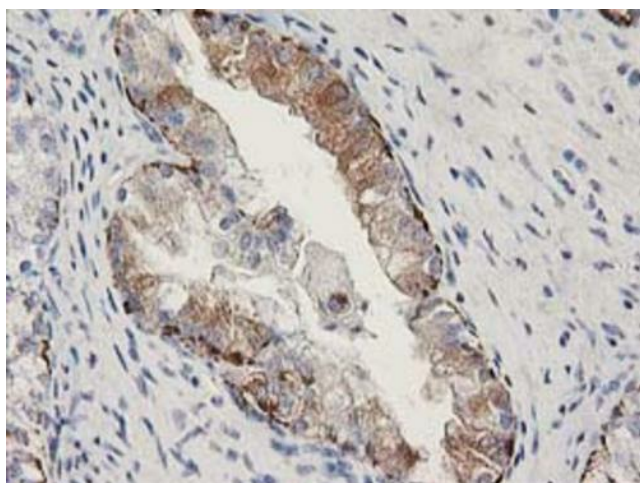
[View online »](#)

**Synonyms:** HU-K5; HUK5; MAGL; MGL  
**Protein Families:** Druggable Genome, Protease  
**Protein Pathways:** Glycerolipid metabolism, Metabolic pathways

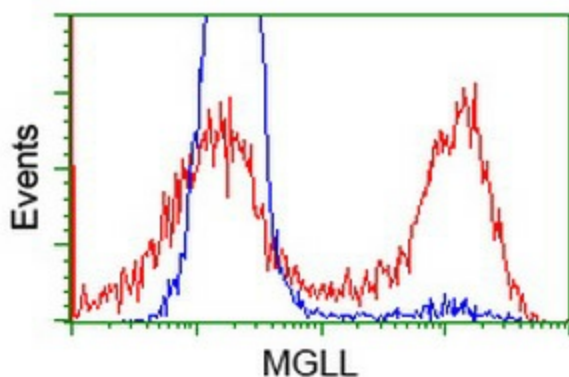
**Product images:**



HEK293T cells were transfected with the pCMV6-ENTRY control (Left lane) or pCMV6-ENTRY MGLL [RC218358], Right lane) cDNA for 48 hrs and lysed. Equivalent amounts of cell lysates (5 ug per lane) were separated by SDS-PAGE and immunoblotted with anti-MGLL. Positive lysates [LY402124] (100ug) and [LC402124] (20ug) can be purchased separately from OriGene.



Immunohistochemical staining of paraffin-embedded Adenocarcinoma of Human ovary tissue using anti-MGLL mouse monoclonal antibody. Heat-induced epitope retrieval by EDTA solution buffer pH 8.0 at 120°C for 3 min.



HEK293T cells transfected with either [RC218358] overexpress plasmid (Red) or empty vector control plasmid (Blue) were immunostained by anti-MGLL antibody (TA502931), and then analyzed by flow cytometry.