

Product datasheet for **TA502928BM**

EB2 (MAPRE2) Mouse Monoclonal Antibody (HRP conjugated) [Clone ID: OTI7A2]

Product data:

| | |
|--------------------------------|--|
| Product Type: | Primary Antibodies |
| Clone Name: | OTI7A2 |
| Applications: | FC, IF, IHC, WB |
| Recommended Dilution: | WB 1:2000, IHC 1:150, IF 1:100, FLOW 1:100 |
| Reactivity: | Human |
| Host: | Mouse |
| Isotype: | IgG2b |
| Clonality: | Monoclonal |
| Immunogen: | Full length human recombinant protein of human MAPRE2 (NP_055083) produced in HEK293T cell. |
| Formulation: | PBS (pH 7.3) containing 1% BSA, 50% glycerol. |
| Concentration: | 0.5 mg/ml |
| Purification: | Purified from mouse ascites fluids or tissue culture supernatant by affinity chromatography (protein A/G) |
| Conjugation: | HRP |
| Storage: | Store at -20°C as received. |
| Stability: | Stable for 12 months from date of receipt. |
| Predicted Protein Size: | 36.9 kDa |
| Gene Name: | microtubule associated protein RP/EB family member 2 |
| Database Link: | NP_055083 Entrez Gene 10982 Human Q15555 |
| Background: | The protein encoded by this gene shares significant homology to the adenomatous polyposis coli (APC) protein-binding EB1 gene family. This protein is a microtubule-associated protein that is necessary for spindle symmetry during mitosis. It is thought to play a role in the tumorigenesis of colorectal cancers and the proliferative control of normal cells. Alternative splicing of this gene results in multiple transcript variants. [provided by RefSeq, Jan 2012] |

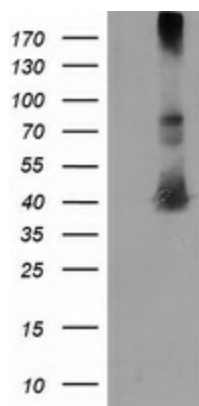


[View online »](#)

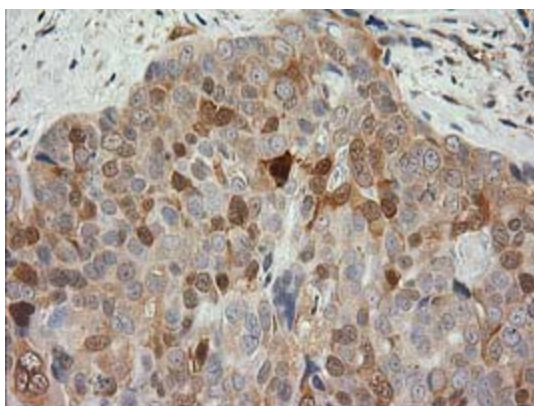
Synonyms: EB1; EB2; RP1

Protein Families: Druggable Genome

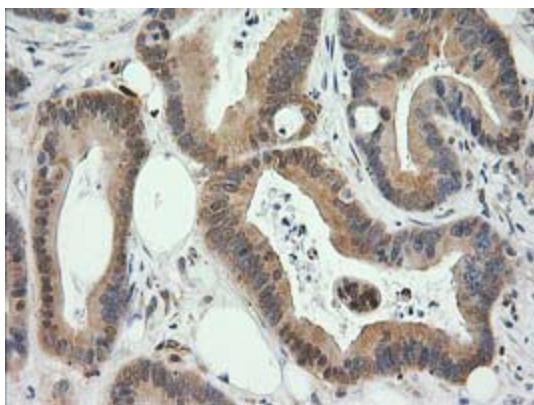
Product images:



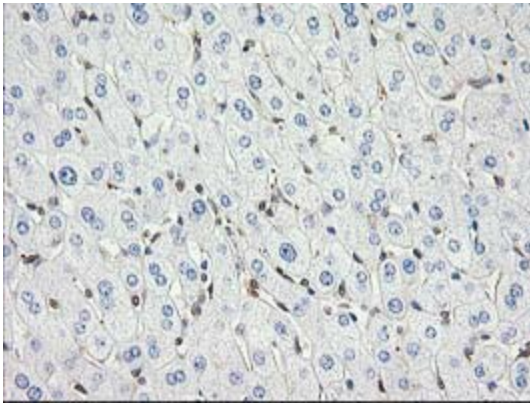
HEK293T cells were transfected with the pCMV6-ENTRY control (Cat# [PS100001], Left lane) or pCMV6-ENTRY MAPRE2 (Cat# [RC200259], Right lane) cDNA for 48 hrs and lysed. Equivalent amounts of cell lysates (5 ug per lane) were separated by SDS-PAGE and immunoblotted with anti-MAPRE2(Cat# [TA502928]). Positive lysates [LY415395] (100ug) and [LC415395] (20ug) can be purchased separately from OriGene.



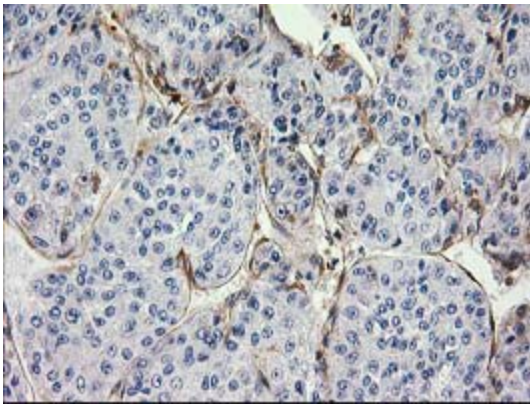
Immunohistochemical staining of paraffin-embedded Adenocarcinoma of Human breast tissue using anti-MAPRE2 mouse monoclonal antibody. (Heat-induced epitope retrieval by 10mM citric buffer, pH6.0, 100°C for 10min, [TA502928])



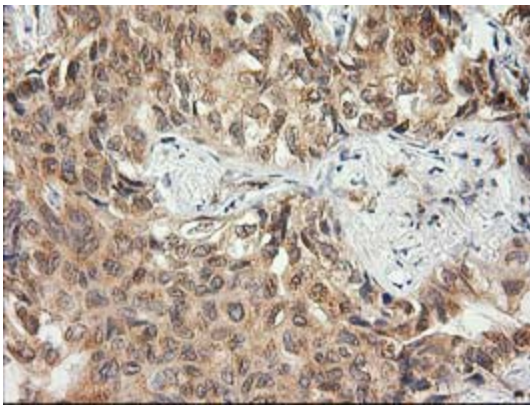
Immunohistochemical staining of paraffin-embedded Adenocarcinoma of Human colon tissue using anti-MAPRE2 mouse monoclonal antibody. (Heat-induced epitope retrieval by 10mM citric buffer, pH6.0, 100°C for 10min, [TA502928])



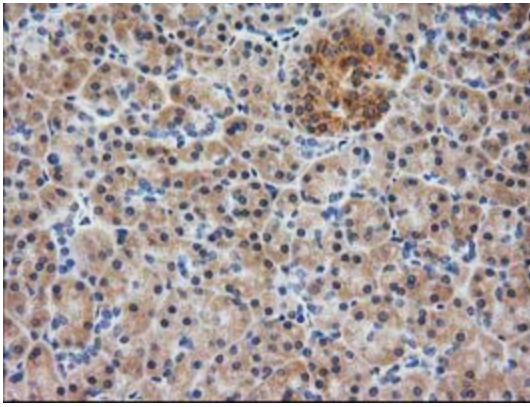
Immunohistochemical staining of paraffin-embedded Human liver tissue within the normal limits using anti-MAPRE2 mouse monoclonal antibody. (Heat-induced epitope retrieval by 10mM citric buffer, pH6.0, 100°C for 10min, [TA502928])



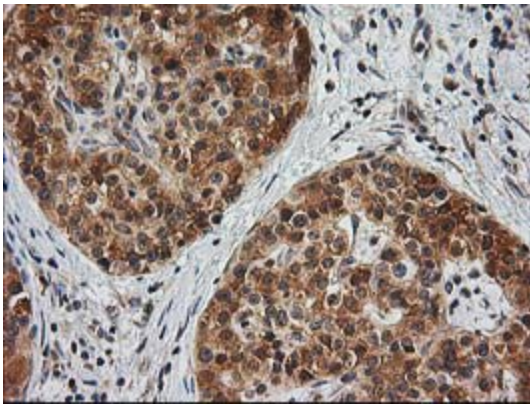
Immunohistochemical staining of paraffin-embedded Carcinoma of Human liver tissue using anti-MAPRE2 mouse monoclonal antibody. (Heat-induced epitope retrieval by 10mM citric buffer, pH6.0, 100°C for 10min, [TA502928])



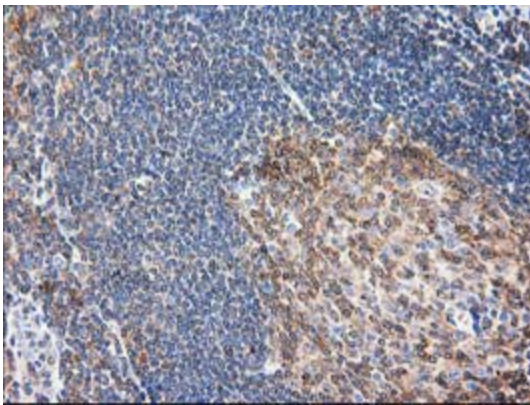
Immunohistochemical staining of paraffin-embedded Carcinoma of Human lung tissue using anti-MAPRE2 mouse monoclonal antibody. (Heat-induced epitope retrieval by 10mM citric buffer, pH6.0, 100°C for 10min, [TA502928])



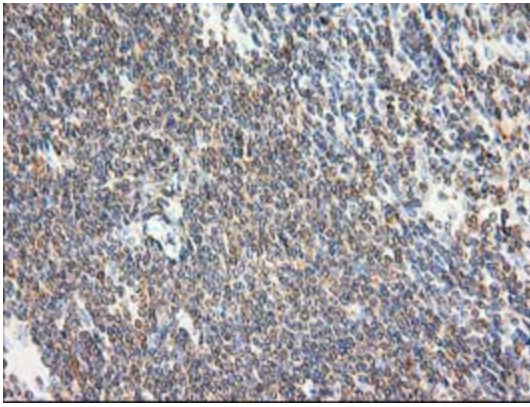
Immunohistochemical staining of paraffin-embedded Human pancreas tissue within the normal limits using anti-MAPRE2 mouse monoclonal antibody. (Heat-induced epitope retrieval by 10mM citric buffer, pH6.0, 100°C for 10min, [TA502928])



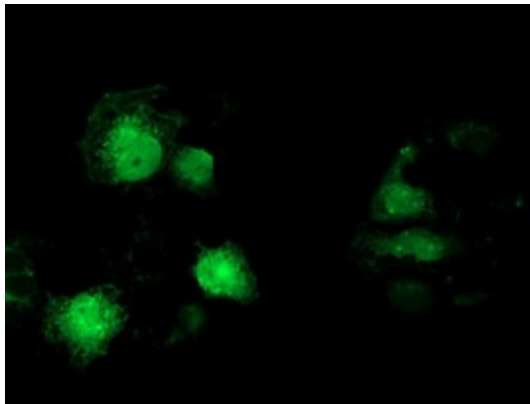
Immunohistochemical staining of paraffin-embedded Carcinoma of Human pancreas tissue using anti-MAPRE2 mouse monoclonal antibody. (Heat-induced epitope retrieval by 10mM citric buffer, pH6.0, 100°C for 10min, [TA502928])



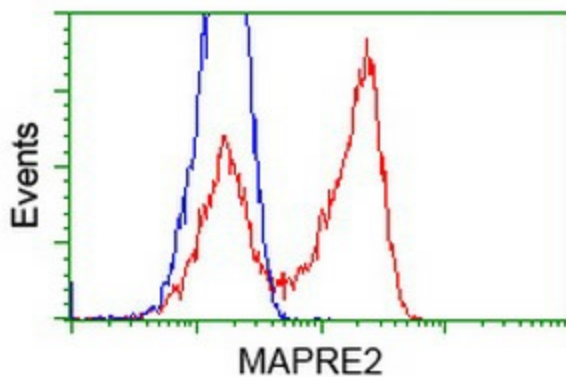
Immunohistochemical staining of paraffin-embedded Human lymph node tissue within the normal limits using anti-MAPRE2 mouse monoclonal antibody. (Heat-induced epitope retrieval by 10mM citric buffer, pH6.0, 100°C for 10min, [TA502928])



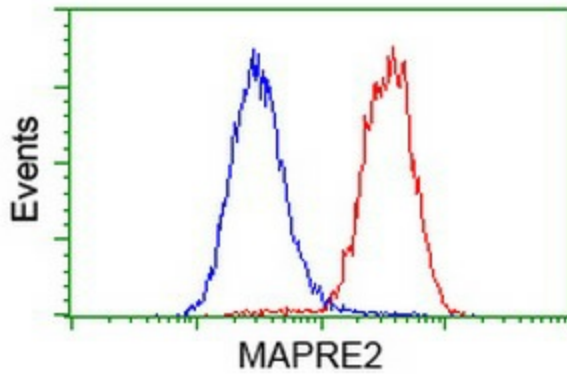
Immunohistochemical staining of paraffin-embedded Human lymphoma tissue using anti-MAPRE2 mouse monoclonal antibody. (Heat-induced epitope retrieval by 10mM citric buffer, pH6.0, 100°C for 10min, [TA502928])



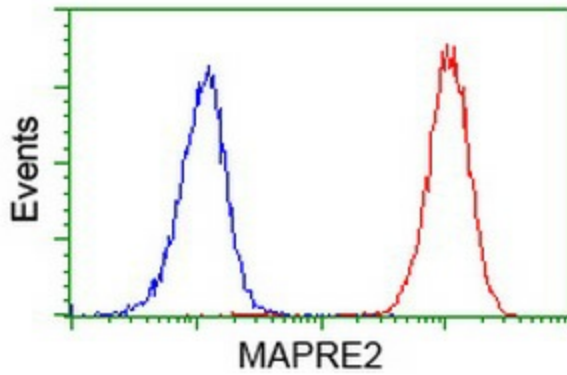
Anti-MAPRE2 mouse monoclonal antibody ([TA502928]) immunofluorescent staining of COS7 cells transiently transfected by pCMV6-ENTRY MAPRE2 ([RC200259]).



HEK293T cells transfected with either [RC200259] overexpress plasmid (Red) or empty vector control plasmid (Blue) were immunostained by anti-MAPRE2 antibody ([TA502928]), and then analyzed by flow cytometry.



Flow cytometric Analysis of HeLa cells, using anti-MAPRE2 antibody ([TA502928]), (Red), compared to a nonspecific negative control antibody, (Blue).



Flow cytometric Analysis of Jurkat cells, using anti-MAPRE2 antibody ([TA502928]), (Red), compared to a nonspecific negative control antibody, (Blue).