

Product datasheet for **TA502927BM**

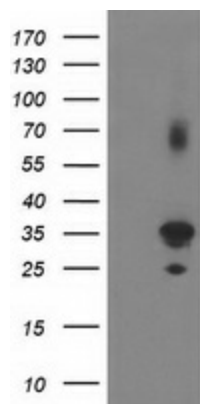
PLEKHA3 Mouse Monoclonal Antibody (HRP conjugated) [Clone ID: OTI5D11]

Product data:

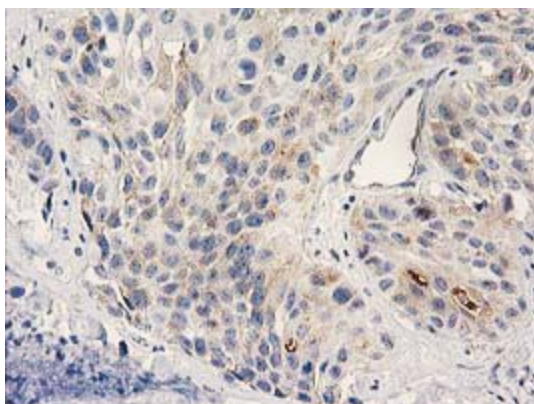
Product Type:	Primary Antibodies
Clone Name:	OTI5D11
Applications:	FC, IF, IHC, WB
Recommended Dilution:	WB 1:2000, IHC 1:150, IF 1:100, FLOW 1:100
Reactivity:	Human, Mouse, Rat
Host:	Mouse
Isotype:	IgG2b
Clonality:	Monoclonal
Immunogen:	Full length human recombinant protein of human PLEKHA3 (NP_061964) produced in HEK293T cell.
Formulation:	PBS (pH 7.3) containing 1% BSA, 50% glycerol.
Concentration:	0.5 mg/ml
Purification:	Purified from mouse ascites fluids or tissue culture supernatant by affinity chromatography (protein A/G)
Conjugation:	HRP
Storage:	Store at -20°C as received.
Stability:	Stable for 12 months from date of receipt.
Predicted Protein Size:	33.7 kDa
Gene Name:	pleckstrin homology domain containing A3
Database Link:	NP_061964 Entrez Gene 83435 Mouse Entrez Gene 295674 Rat Entrez Gene 65977 Human Q9HB20
Synonyms:	FAPP1



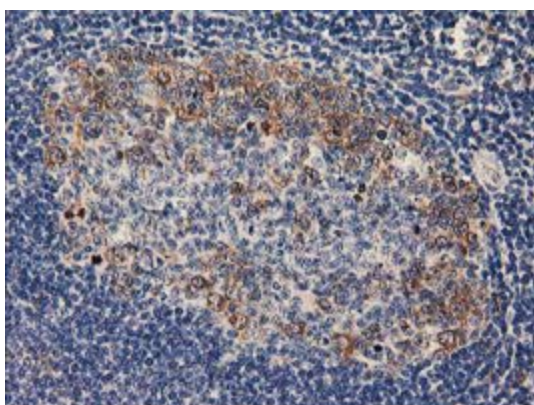
[View online »](#)

Product images:

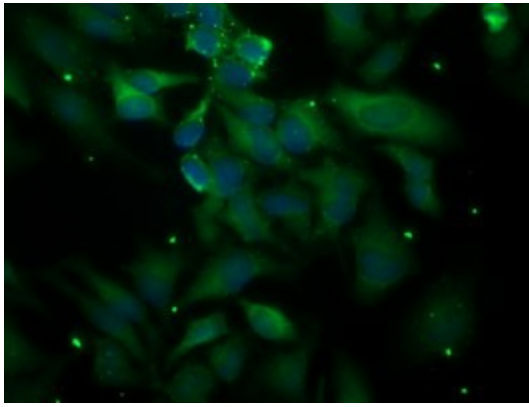
HEK293T cells were transfected with the pCMV6-ENTRY control (Cat# [PS100001], Left lane) or pCMV6-ENTRY PLEKHA3 (Cat# [RC208433], Right lane) cDNA for 48 hrs and lysed. Equivalent amounts of cell lysates (5 ug per lane) were separated by SDS-PAGE and immunoblotted with anti-PLEKHA3 (Cat# [TA502927]). Positive lysates [LY402733] (100ug) and [LC402733] (20ug) can be purchased separately from OriGene.



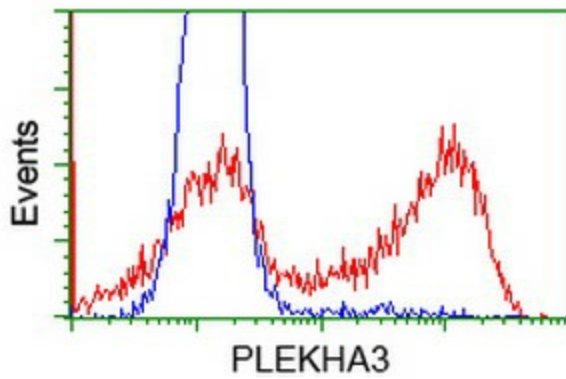
Immunohistochemical staining of paraffin-embedded Carcinoma of Human bladder tissue using anti-PLEKHA3 mouse monoclonal antibody. (Heat-induced epitope retrieval by 10mM citric buffer, pH6.0, 100°C for 10min, [TA502927])



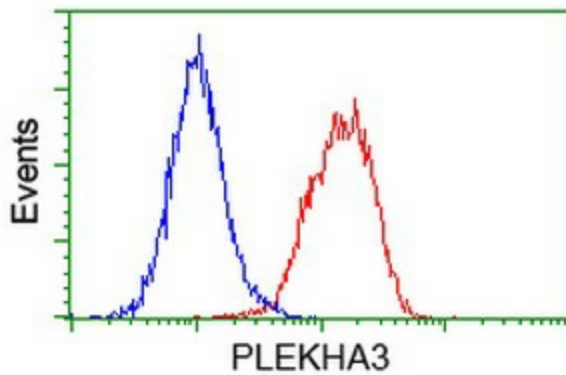
Immunohistochemical staining of paraffin-embedded Human lymph node tissue within the normal limits using anti-PLEKHA3 mouse monoclonal antibody. (Heat-induced epitope retrieval by 10mM citric buffer, pH6.0, 100°C for 10min, [TA502927])



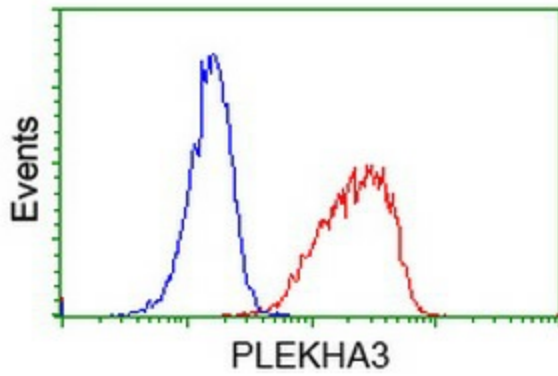
Immunofluorescent staining of HeLa cells using anti-**PLEKHA3** mouse monoclonal antibody ([TA502927]).



HEK293T cells transfected with either [RC208433] overexpress plasmid (Red) or empty vector control plasmid (Blue) were immunostained by anti-**PLEKHA3** antibody ([TA502927]), and then analyzed by flow cytometry.



Flow cytometric Analysis of HeLa cells, using anti-**PLEKHA3** antibody ([TA502927]), (Red), compared to a nonspecific negative control antibody, (Blue).



Flow cytometric Analysis of Jurkat cells, using anti-PLEKHA3 antibody ([TA502927]), (Red), compared to a nonspecific negative control antibody, (Blue).