

## Product datasheet for **TA502927AM**

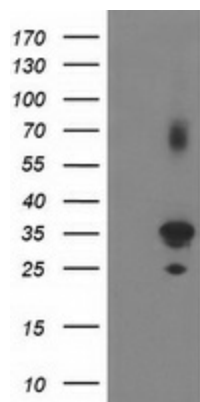
### **PLEKHA3 Mouse Monoclonal Antibody (Biotin conjugated) [Clone ID: OTI5D11]**

#### **Product data:**

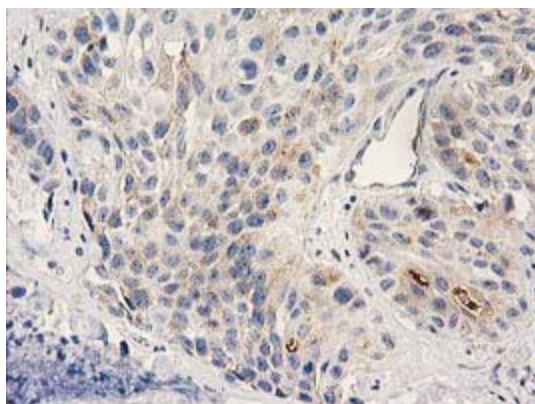
<b>Product Type:</b>	Primary Antibodies
<b>Clone Name:</b>	OTI5D11
<b>Applications:</b>	FC, IF, IHC, WB
<b>Recommended Dilution:</b>	WB 1:2000, IHC 1:150, IF 1:100, FLOW 1:100
<b>Reactivity:</b>	Human, Mouse, Rat
<b>Host:</b>	Mouse
<b>Isotype:</b>	IgG2b
<b>Clonality:</b>	Monoclonal
<b>Immunogen:</b>	Full length human recombinant protein of human PLEKHA3 (NP_061964) produced in HEK293T cell.
<b>Formulation:</b>	PBS (pH 7.3) containing 1% BSA, 50% glycerol and 0.02% sodium azide.
<b>Concentration:</b>	0.5 mg/ml
<b>Purification:</b>	Purified from mouse ascites fluids or tissue culture supernatant by affinity chromatography (protein A/G)
<b>Conjugation:</b>	Biotin
<b>Storage:</b>	Store at -20°C as received.
<b>Stability:</b>	Stable for 12 months from date of receipt.
<b>Predicted Protein Size:</b>	33.7 kDa
<b>Gene Name:</b>	pleckstrin homology domain containing A3
<b>Database Link:</b>	<a href="#">NP_061964</a> <a href="#">Entrez Gene 83435 Mouse</a> <a href="#">Entrez Gene 295674 Rat</a> <a href="#">Entrez Gene 65977 Human</a> <a href="#">Q9HB20</a>
<b>Synonyms:</b>	FAPP1



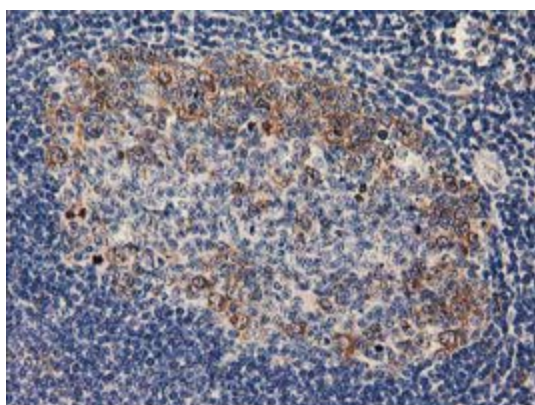
[View online »](#)

**Product images:**

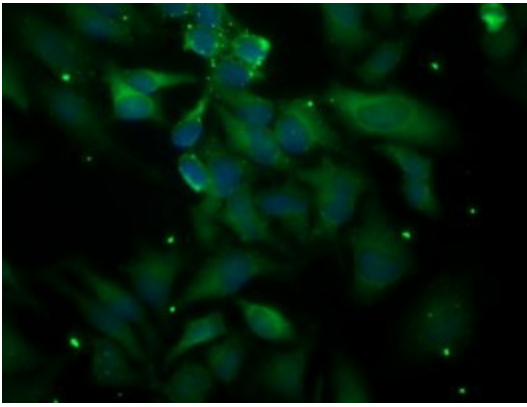
HEK293T cells were transfected with the pCMV6-ENTRY control (Cat# [PS100001], Left lane) or pCMV6-ENTRY PLEKHA3 (Cat# [RC208433], Right lane) cDNA for 48 hrs and lysed. Equivalent amounts of cell lysates (5 ug per lane) were separated by SDS-PAGE and immunoblotted with anti-PLEKHA3 (Cat# [TA502927]). Positive lysates [LY402733] (100ug) and [LC402733] (20ug) can be purchased separately from OriGene.



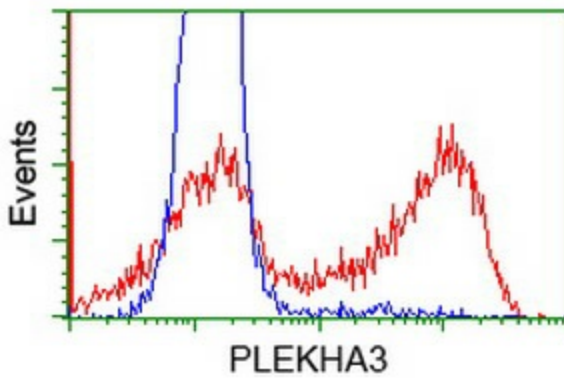
Immunohistochemical staining of paraffin-embedded Carcinoma of Human bladder tissue using anti-PLEKHA3 mouse monoclonal antibody. (Heat-induced epitope retrieval by 10mM citric buffer, pH6.0, 100°C for 10min, [TA502927])



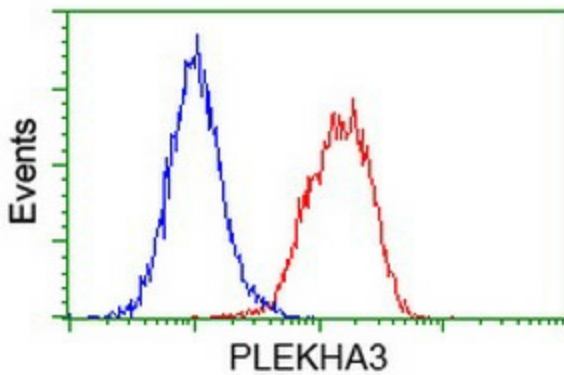
Immunohistochemical staining of paraffin-embedded Human lymph node tissue within the normal limits using anti-PLEKHA3 mouse monoclonal antibody. (Heat-induced epitope retrieval by 10mM citric buffer, pH6.0, 100°C for 10min, [TA502927])



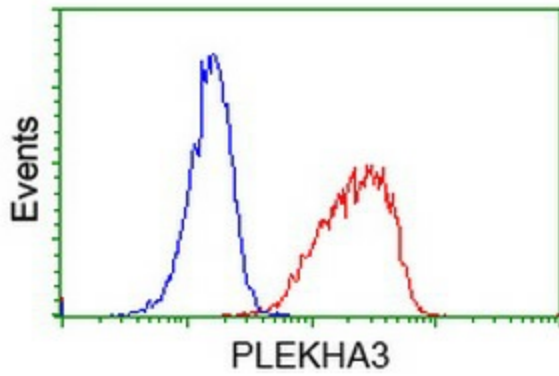
Immunofluorescent staining of HeLa cells using anti-**PLEKHA3** mouse monoclonal antibody ([TA502927]).



HEK293T cells transfected with either [RC208433] overexpress plasmid (Red) or empty vector control plasmid (Blue) were immunostained by anti-**PLEKHA3** antibody ([TA502927]), and then analyzed by flow cytometry.



Flow cytometric Analysis of HeLa cells, using anti-**PLEKHA3** antibody ([TA502927]), (Red), compared to a nonspecific negative control antibody, (Blue).



Flow cytometric Analysis of Jurkat cells, using anti-PLEKHA3 antibody ([TA502927]), (Red), compared to a nonspecific negative control antibody, (Blue).