

Product datasheet for **TA502921M**

SOCS3 Mouse Monoclonal Antibody [Clone ID: OTI5D4]

Product data:

| | |
|-------------------------|-----------------------------------------------------------------------------------------------------------------------------------------------------------------------------|
| Product Type: | Primary Antibodies |
| Clone Name: | OTI5D4 |
| Applications: | FC, IF, IHC, WB |
| Recommended Dilution: | WB 1:2000, IHC 1:150, IF 1:100, FLOW 1:100 |
| Reactivity: | Human, Mouse, Rat |
| Host: | Mouse |
| Isotype: | IgG2b |
| Clonality: | Monoclonal |
| Immunogen: | Full length human recombinant protein of human SOCS3 (NP_003946) produced in HEK293T cell. |
| Formulation: | PBS (pH 7.3) containing 1% BSA, 50% glycerol and 0.02% sodium azide. |
| Concentration: | 1 mg/ml |
| Purification: | Purified from mouse ascites fluids or tissue culture supernatant by affinity chromatography (protein A/G) |
| Conjugation: | Unconjugated |
| Storage: | Store at -20°C as received. |
| Stability: | Stable for 12 months from date of receipt. |
| Predicted Protein Size: | 24.6 kDa |
| Gene Name: | suppressor of cytokine signaling 3 |
| Database Link: | NP_003946 Entrez Gene 12702 Mouse Entrez Gene 89829 Rat Entrez Gene 9021 Human O14543 |


[View online »](#)

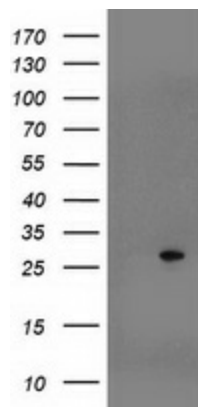
Background: This gene encodes a member of the STAT-induced STAT inhibitor (SSI), also known as suppressor of cytokine signaling (SOCS), family. SSI family members are cytokine-inducible negative regulators of cytokine signaling. The expression of this gene is induced by various cytokines, including IL6, IL10, and interferon (IFN)-gamma. The protein encoded by this gene can bind to JAK2 kinase, and inhibit the activity of JAK2 kinase. Studies of the mouse counterpart of this gene suggested the roles of this gene in the negative regulation of fetal liver hematopoiesis, and placental development. [provided by RefSeq]

Synonyms: ATOD4; CIS3; Cish3; SOCS-3; SSI-3; SSI3

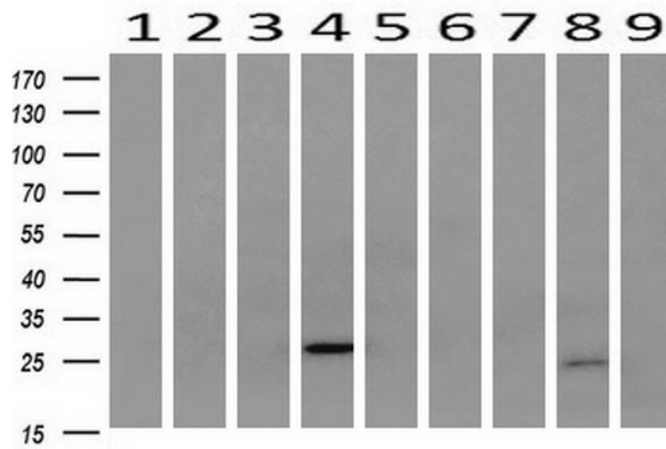
Protein Families: Druggable Genome

Protein Pathways: Adipocytokine signaling pathway, Insulin signaling pathway, Jak-STAT signaling pathway, Type II diabetes mellitus, Ubiquitin mediated proteolysis

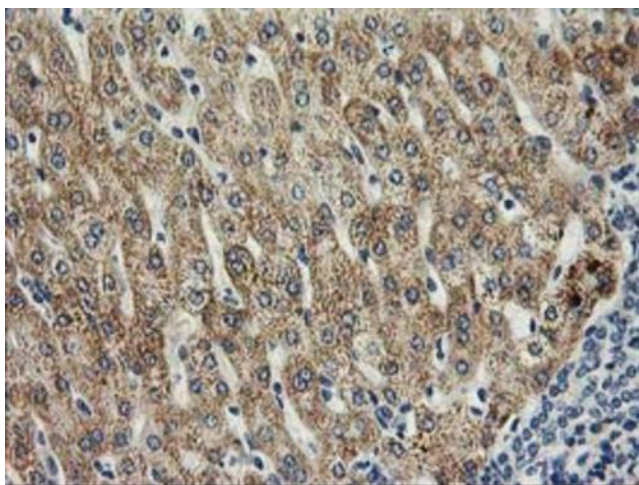
Product images:



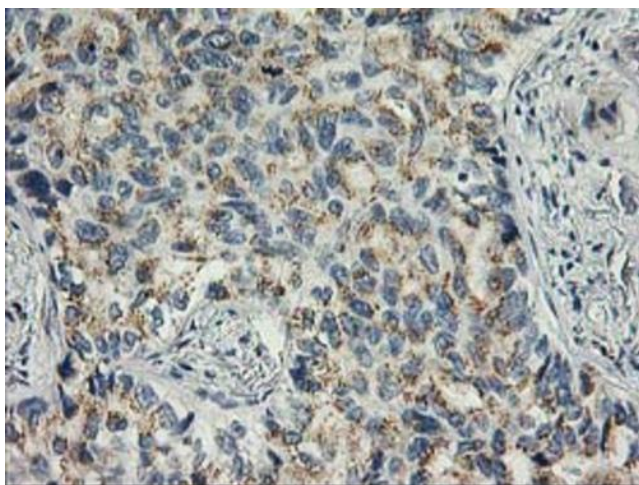
HEK293T cells were transfected with the pCMV6-ENTRY control (Left lane) or pCMV6-ENTRY SOCS3 ([RC209305], Right lane) cDNA for 48 hrs and lysed. Equivalent amounts of cell lysates (5 ug per lane) were separated by SDS-PAGE and immunoblotted with anti-SOCS3.



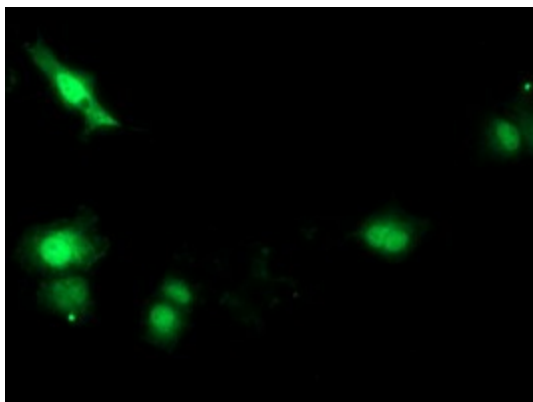
Western blot analysis of extracts (10ug) from 9 Human tissue by using anti-SOCS3 monoclonal antibody at 1:200 (1: Testis; 2: Omentum; 3: Uterus; 4: Breast; 5: Brain; 6: Liver; 7: Ovary; 8: Thyroid gland; 9: colon).



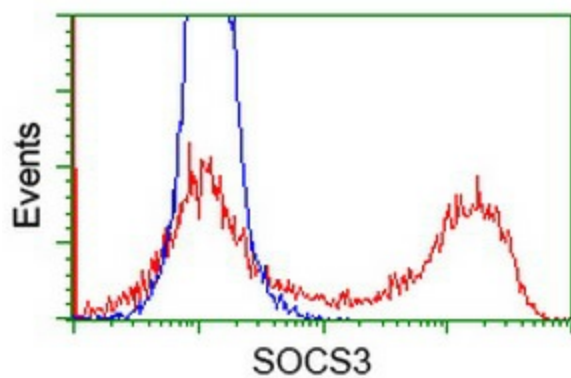
Immunohistochemical staining of paraffin-embedded Human liver tissue within the normal limits using anti-SOCS3 mouse monoclonal antibody. Heat-induced epitope retrieval by EDTA solution buffer pH 8.0 at 120°C for 3 min.



Immunohistochemical staining of paraffin-embedded Carcinoma of Human lung tissue using anti-SOCS3 mouse monoclonal antibody. Heat-induced epitope retrieval by EDTA solution buffer pH 8.0 at 120°C for 3 min.



Anti-SOCS3 mouse monoclonal antibody ([TA502921]) immunofluorescent staining of COS7 cells transiently transfected by pCMV6-ENTRY SOCS3 ([RC209305]).



HEK293T cells transfected with either [RC209305] overexpress plasmid (Red) or empty vector control plasmid (Blue) were immunostained by anti-SOCS3 antibody ([TA502921]), and then analyzed by flow cytometry.