

## Product datasheet for **TA502920AM**

### **ADH1B Mouse Monoclonal Antibody (Biotin conjugated) [Clone ID: OTI3F2]**

#### **Product data:**

Product Type:	Primary Antibodies
Clone Name:	OTI3F2
Applications:	FC, IHC, WB
Recommended Dilution:	WB 1:2000, IHC 1:150, FLOW 1:100
Reactivity:	Human
Host:	Mouse
Isotype:	IgG1
Clonality:	Monoclonal
Immunogen:	Full length human recombinant protein of human ADH1B (NP_000659) produced in HEK293T cell.
Formulation:	PBS (pH 7.3) containing 1% BSA, 50% glycerol and 0.02% sodium azide.
Concentration:	0.5 mg/ml
Purification:	Purified from mouse ascites fluids or tissue culture supernatant by affinity chromatography (protein A/G)
Conjugation:	Biotin
Storage:	Store at -20°C as received.
Stability:	Stable for 12 months from date of receipt.
Predicted Protein Size:	39.7 kDa
Gene Name:	alcohol dehydrogenase 1B (class I), beta polypeptide
Database Link:	<a href="#">NP_000659</a> <a href="#">Entrez Gene 125 Human</a> <a href="#">P00325</a>



[View online »](#)

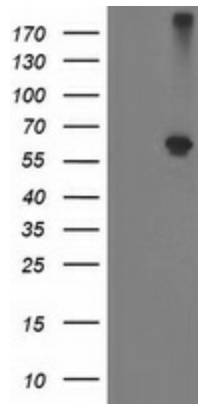
**Background:** The protein encoded by this gene is a member of the alcohol dehydrogenase family. Members of this enzyme family metabolize a wide variety of substrates, including ethanol, retinol, other aliphatic alcohols, hydroxysteroids, and lipid peroxidation products. This encoded protein, consisting of several homo- and heterodimers of alpha, beta, and gamma subunits, exhibits high activity for ethanol oxidation and plays a major role in ethanol catabolism. Three genes encoding alpha, beta and gamma subunits are tandemly organized in a genomic segment as a gene cluster. [provided by RefSeq, Jul 2008]

**Synonyms:** ADH2; HEL-S-117

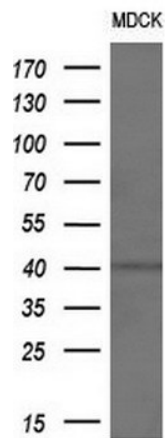
**Protein Families:** Druggable Genome

**Protein Pathways:** Drug metabolism - cytochrome P450, Fatty acid metabolism, Glycolysis / Gluconeogenesis, Metabolic pathways, Metabolism of xenobiotics by cytochrome P450, Retinol metabolism, Tyrosine metabolism

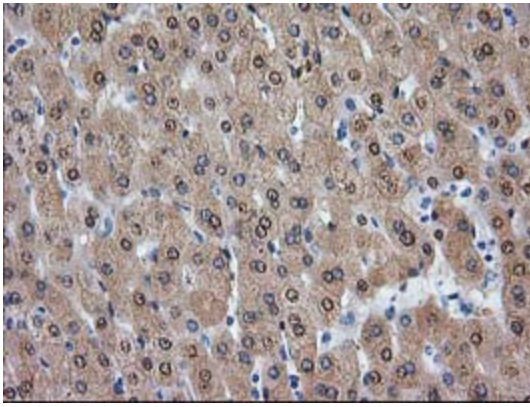
### Product images:



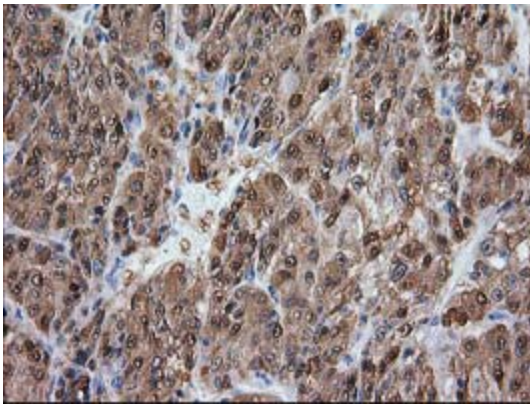
HEK293T cells were transfected with the pCMV6-ENTRY control (Left lane) or pCMV6-ENTRY ADH1B ([RC205391], Right lane) cDNA for 48 hrs and lysed. Equivalent amounts of cell lysates (5 ug per lane) were separated by SDS-PAGE and immunoblotted with anti-ADH1B. Positive lysates [LY424580] (100ug) and [LC424580] (20ug) can be purchased separately from OriGene.



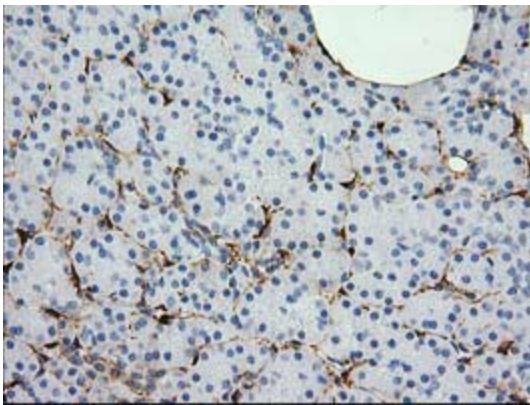
Western blot analysis of extracts (10ug) from 1 cell line by using anti-ADH1B monoclonal antibody (1:200).



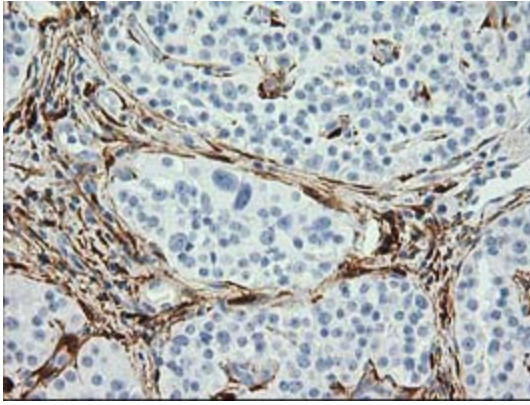
Immunohistochemical staining of paraffin-embedded Human liver tissue within the normal limits using anti-ADH1B mouse monoclonal antibody. (Heat-induced epitope retrieval by 10mM citric buffer, pH6.0, 100°C for 10min, [TA502920])



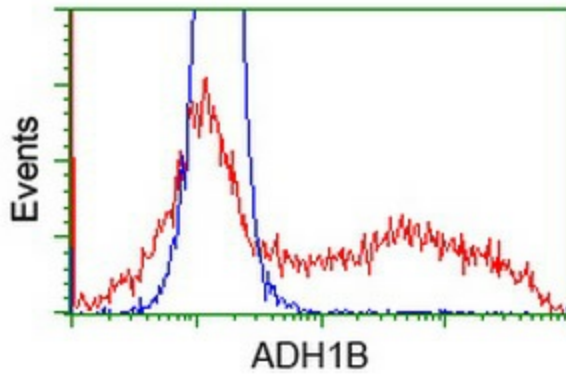
Immunohistochemical staining of paraffin-embedded Carcinoma of Human liver tissue using anti-ADH1B mouse monoclonal antibody. (Heat-induced epitope retrieval by 10mM citric buffer, pH6.0, 100°C for 10min, [TA502920])



Immunohistochemical staining of paraffin-embedded Human pancreas tissue within the normal limits using anti-ADH1B mouse monoclonal antibody. (Heat-induced epitope retrieval by 10mM citric buffer, pH6.0, 100°C for 10min, [TA502920])



Immunohistochemical staining of paraffin-embedded Carcinoma of Human pancreas tissue using anti-ADH1B mouse monoclonal antibody. (Heat-induced epitope retrieval by 10mM citric buffer, pH6.0, 100°C for 10min, [TA502920])



HEK293T cells transfected with either [RC205391] overexpress plasmid (Red) or empty vector control plasmid (Blue) were immunostained by anti-ADH1B antibody ([TA502920]), and then analyzed by flow cytometry.