

Product datasheet for **TA502905AM**

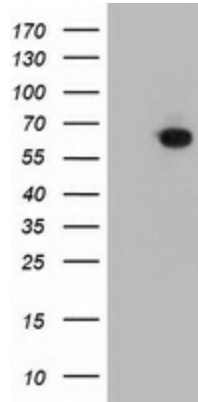
CRY2 Mouse Monoclonal Antibody (Biotin conjugated) [Clone ID: OTI1H5]

Product data:

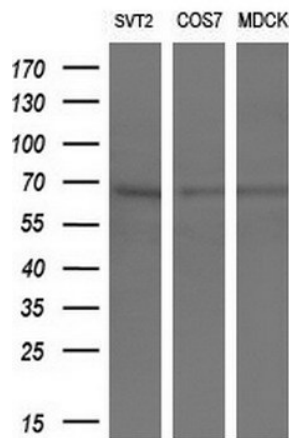
Product Type:	Primary Antibodies
Clone Name:	OTI1H5
Applications:	FC, IF, IHC, WB
Recommended Dilution:	WB 1:2000, IHC 1:150, IF 1:100, FLOW 1:100
Reactivity:	Human, Mouse, Rat
Host:	Mouse
Isotype:	IgG2a
Clonality:	Monoclonal
Immunogen:	Full length human recombinant protein of human CRY2 (NP_0066940) produced in HEK293T cell.
Formulation:	PBS (pH 7.3) containing 1% BSA, 50% glycerol and 0.02% sodium azide.
Concentration:	0.5 mg/ml
Purification:	Purified from mouse ascites fluids or tissue culture supernatant by affinity chromatography (protein A/G)
Conjugation:	Biotin
Storage:	Store at -20°C as received.
Stability:	Stable for 12 months from date of receipt.
Predicted Protein Size:	66.8 kDa
Gene Name:	cryptochrome circadian regulator 2
Database Link:	NP_066940 Entrez Gene 12953 Mouse Entrez Gene 170917 Rat Entrez Gene 1408 Human Q49AN0
Synonyms:	HCRY2; PHLL2
Protein Families:	Druggable Genome
Protein Pathways:	Circadian rhythm - mammal



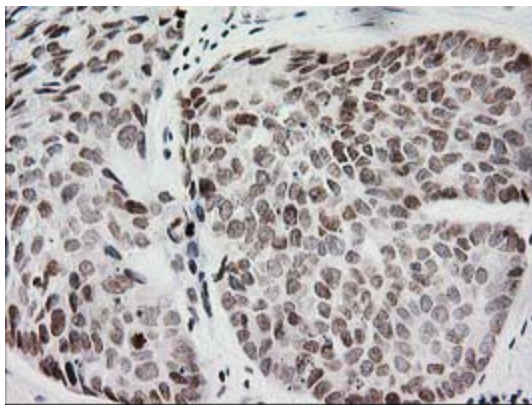
[View online »](#)

Product images:


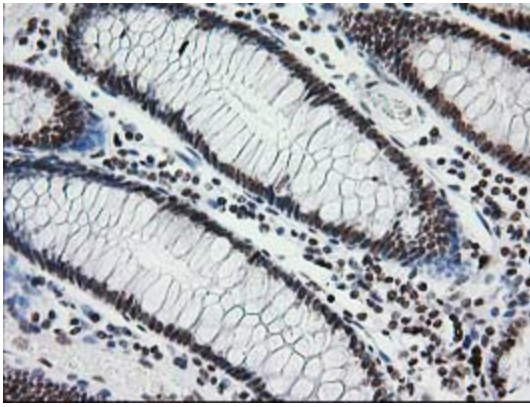
HEK293T cells were transfected with the pCMV6-ENTRY control (Cat# [PS100001], Left lane) or pCMV6-ENTRY CRY2 (Cat# [RC207337], Right lane) cDNA for 48 hrs and lysed. Equivalent amounts of cell lysates (5 ug per lane) were separated by SDS-PAGE and immunoblotted with anti-CRY2 (Cat# [TA502905]). Positive lysates [LY432326] (100ug) and [LC432326] (20ug) can be purchased separately from OriGene.



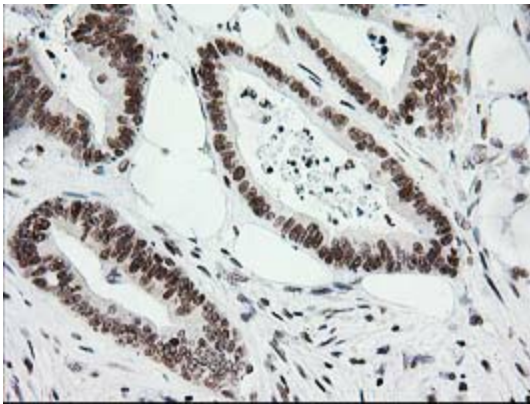
Western blot analysis of extracts (10ug) from 3 different cell lines by using anti-CRY2 monoclonal antibody (1:200).



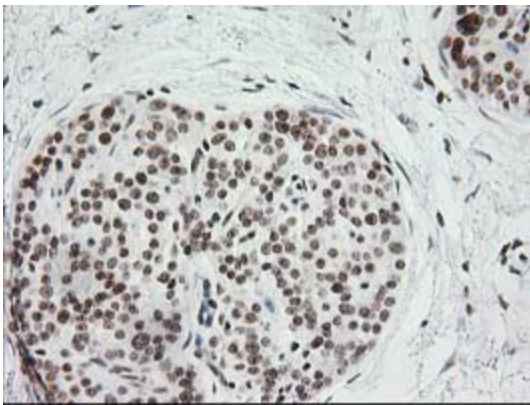
Immunohistochemical staining of paraffin-embedded Adenocarcinoma of Human breast tissue using anti-CRY2 mouse monoclonal antibody. (Heat-induced epitope retrieval by 10mM citric buffer, pH6.0, 100°C for 10min, [TA502905])



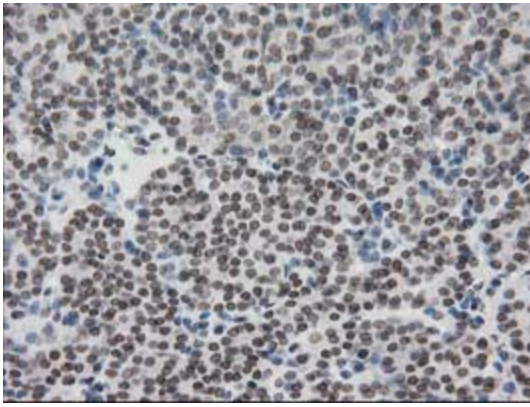
Immunohistochemical staining of paraffin-embedded Human colon tissue within the normal limits using anti-CRY2 mouse monoclonal antibody. (Heat-induced epitope retrieval by 10mM citric buffer, pH6.0, 100°C for 10min, [TA502905])



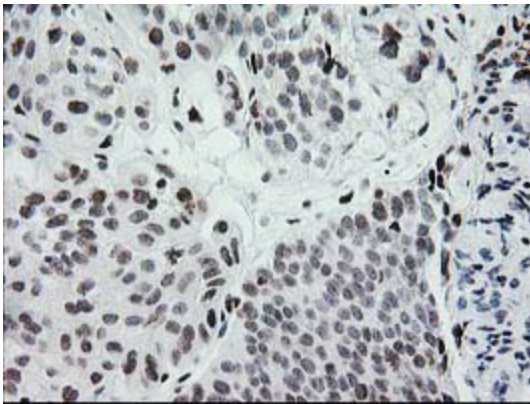
Immunohistochemical staining of paraffin-embedded Adenocarcinoma of Human colon tissue using anti-CRY2 mouse monoclonal antibody. (Heat-induced epitope retrieval by 10mM citric buffer, pH6.0, 100°C for 10min, [TA502905])



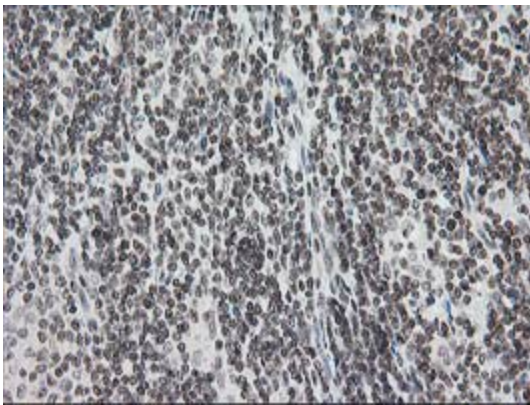
Immunohistochemical staining of paraffin-embedded Carcinoma of Human pancreas tissue using anti-CRY2 mouse monoclonal antibody. (Heat-induced epitope retrieval by 10mM citric buffer, pH6.0, 100°C for 10min, [TA502905])



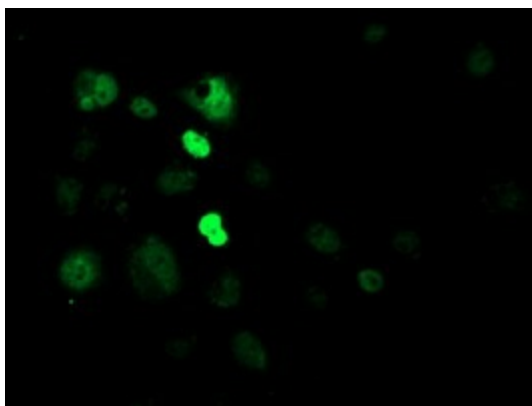
Immunohistochemical staining of paraffin-embedded Carcinoma of Human thyroid tissue using anti-CRY2 mouse monoclonal antibody. (Heat-induced epitope retrieval by 10mM citric buffer, pH6.0, 100°C for 10min, [TA502905])



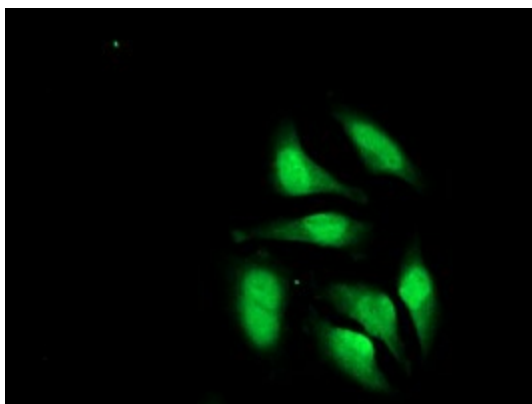
Immunohistochemical staining of paraffin-embedded Carcinoma of Human bladder tissue using anti-CRY2 mouse monoclonal antibody. (Heat-induced epitope retrieval by 10mM citric buffer, pH6.0, 100°C for 10min, [TA502905])



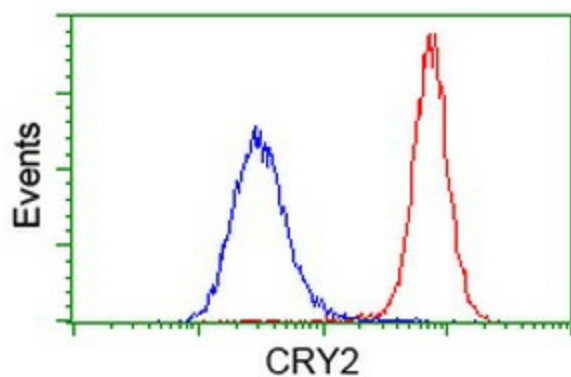
Immunohistochemical staining of paraffin-embedded Human Lymphoma tissue using anti-CRY2 mouse monoclonal antibody. (Heat-induced epitope retrieval by 10mM citric buffer, pH6.0, 100°C for 10min, [TA502905])



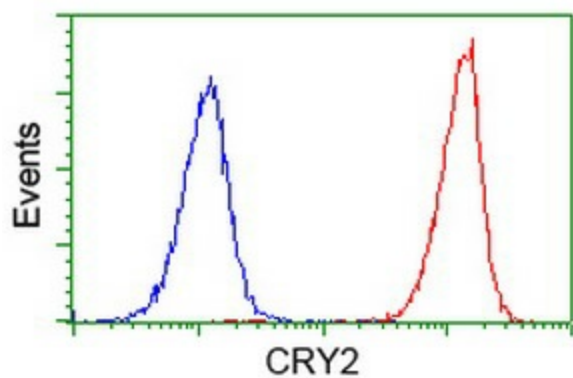
Anti-CRY2 mouse monoclonal antibody ([TA502905]) immunofluorescent staining of COS7 cells transiently transfected by pCMV6-ENTRY CRY2 ([RC207337]).



Immunofluorescent staining of HeLa cells using anti-CRY2 mouse monoclonal antibody ([TA502905]).



Flow cytometric Analysis of HeLa cells, using anti-CRY2 antibody ([TA502905]), (Red), compared to a nonspecific negative control antibody, (Blue).



Flow cytometric Analysis of Jurkat cells, using anti-CRY2 antibody ([TA502905]), (Red), compared to a nonspecific negative control antibody, (Blue).