

## Product datasheet for **TA502904BM**

### LIM Kinase 1 (LIMK1) Mouse Monoclonal Antibody (HRP conjugated) [Clone ID: OTI3H6]

#### Product data:

Product Type:	Primary Antibodies
Clone Name:	OTI3H6
Applications:	FC, IF, IHC, WB
Recommended Dilution:	WB 1:500~2000, IHC 1:150, IF 1:100, FLOW 1:100
Reactivity:	Human, Rat, Monkey, Mouse
Host:	Mouse
Isotype:	IgG2b
Clonality:	Monoclonal
Immunogen:	Full length human recombinant protein of human LIMK1(NP_002305) produced in HEK293T cell.
Formulation:	PBS (pH 7.3) containing 1% BSA, 50% glycerol.
Concentration:	0.5 mg/ml
Purification:	Purified from mouse ascites fluids or tissue culture supernatant by affinity chromatography (protein A/G)
Conjugation:	HRP
Storage:	Store at -20°C as received.
Stability:	Stable for 12 months from date of receipt.
Predicted Protein Size:	72.4 kDa
Gene Name:	LIM domain kinase 1
Database Link:	<a href="#">NP_002305</a> <a href="#">Entrez Gene 16885 Mouse</a> <a href="#">Entrez Gene 65172 Rat</a> <a href="#">Entrez Gene 699494 Monkey</a> <a href="#">Entrez Gene 3984 Human</a> <a href="#">P53667</a>



[View online »](#)

**Background:**

There are approximately 40 known eukaryotic LIM proteins, so named for the LIM domains they contain. LIM domains are highly conserved cysteine-rich structures containing 2 zinc fingers. Although zinc fingers usually function by binding to DNA or RNA, the LIM motif probably mediates protein-protein interactions. LIM kinase-1 and LIM kinase-2 belong to a small subfamily with a unique combination of 2 N-terminal LIM motifs and a C-terminal protein kinase domain. LIMK1 is a serine/threonine kinase that regulates actin polymerization via phosphorylation and inactivation of the actin binding factor cofilin. This protein is ubiquitously expressed during development and plays a role in many cellular processes associated with cytoskeletal structure. This protein also stimulates axon growth and may play a role in brain development. LIMK1 hemizygoty is implicated in the impaired visuospatial constructive cognition of Williams syndrome. Alternative splicing results in multiple transcript variants encoding distinct isoforms.

**Synonyms:**

LIMK; LIMK-1

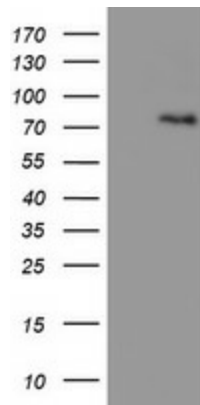
**Protein Families:**

Druggable Genome, Protein Kinase

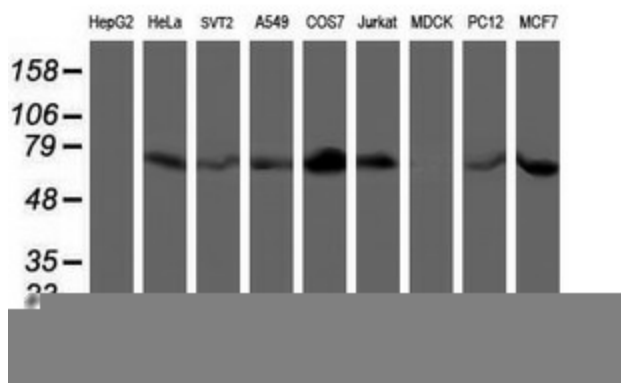
**Protein Pathways:**

Axon guidance, Fc gamma R-mediated phagocytosis, Regulation of actin cytoskeleton

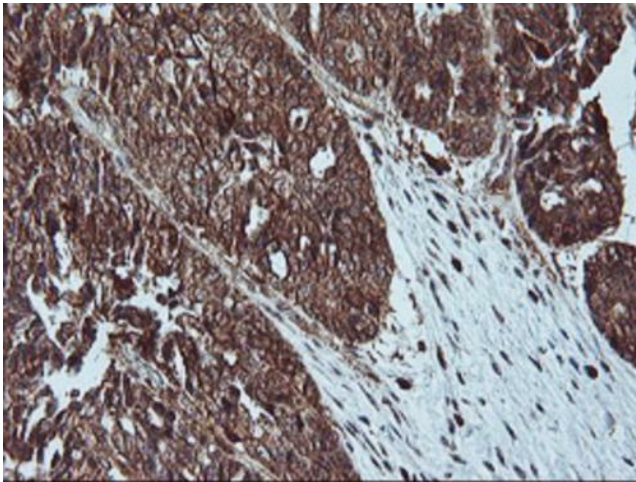
**Product images:**



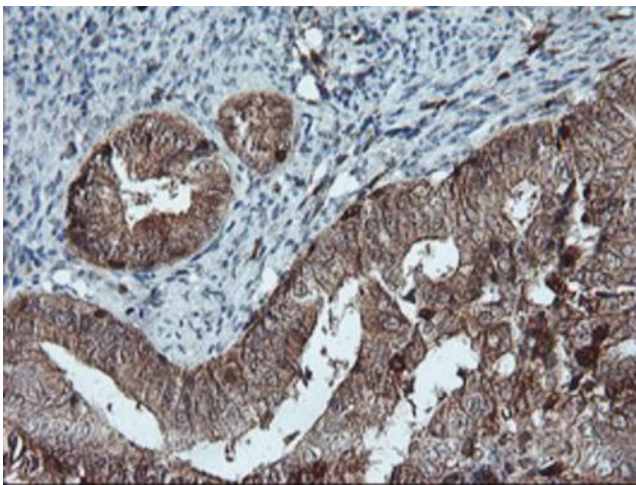
HEK293T cells were transfected with the pCMV6-ENTRY control (Left lane) or pCMV6-ENTRY LIMK1 ([RC218058], Right lane) cDNA for 48 hrs and lysed. Equivalent amounts of cell lysates (5 ug per lane) were separated by SDS-PAGE and immunoblotted with anti-LIMK1. Positive lysates [LY400838] (100ug) and [LC400838] (20ug) can be purchased separately from OriGene.



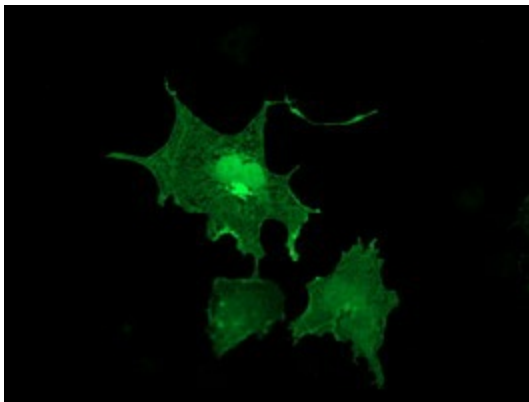
Western blot analysis of extracts (35ug) from 9 different cell lines by using anti-LIMK1 monoclonal antibody.



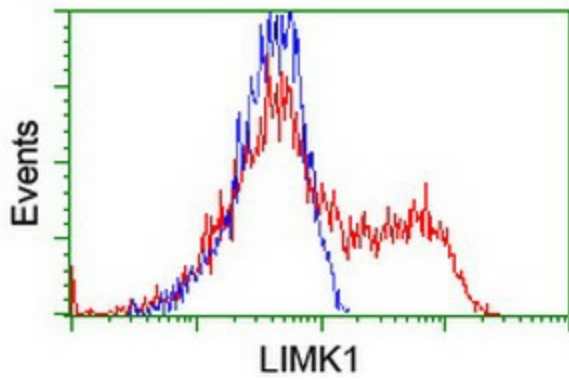
Immunohistochemical staining of paraffin-embedded Adenocarcinoma of Human ovary tissue using anti-LIMK1 mouse monoclonal antibody. (Heat-induced epitope retrieval by 10mM citric buffer, pH6.0, 100°C for 10min, [TA502904])



Immunohistochemical staining of paraffin-embedded Adenocarcinoma of Human endometrium tissue using anti-LIMK1 mouse monoclonal antibody. (Heat-induced epitope retrieval by 10mM citric buffer, pH6.0, 100°C for 10min, [TA502904])



Anti-LIMK1 mouse monoclonal antibody ([TA502904]) immunofluorescent staining of COS7 cells transiently transfected by pCMV6-ENTRY LIMK1 ([RC218058]).



HEK293T cells transfected with either [RC218058] overexpress plasmid (Red) or empty vector control plasmid (Blue) were immunostained by anti-LIMK1 antibody ([TA502904]), and then analyzed by flow cytometry.