

Product datasheet for **TA502903**

C1orf50 Mouse Monoclonal Antibody [Clone ID: OTI1F9]

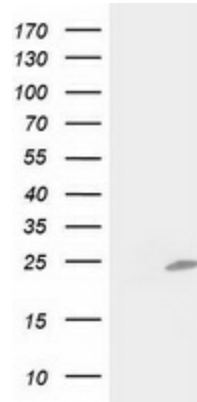
Product data:

Product Type:	Primary Antibodies
Clone Name:	OTI1F9
Applications:	FC, IF, WB
Recommended Dilution:	WB 1:2000, IF 1:100, FLOW 1:100
Reactivity:	Human
Host:	Mouse
Isotype:	IgG2a
Clonality:	Monoclonal
Immunogen:	Full length human recombinant protein of human C1orf50 (NP_077002) produced in HEK293T cell.
Formulation:	PBS (pH 7.3) containing 1% BSA, 50% glycerol and 0.02% sodium azide.
Concentration:	0.71 mg/ml
Purification:	Purified from mouse ascites fluids or tissue culture supernatant by affinity chromatography (protein A/G)
Conjugation:	Unconjugated
Storage:	Store at -20°C as received.
Stability:	Stable for 12 months from date of receipt.
Predicted Protein Size:	21.7 kDa
Gene Name:	chromosome 1 open reading frame 50
Database Link:	NP_077002 Entrez Gene 79078 Human Q9BV19
Synonyms:	MGC955

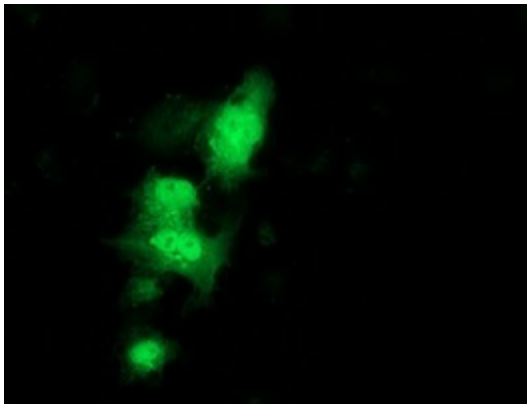


[View online »](#)

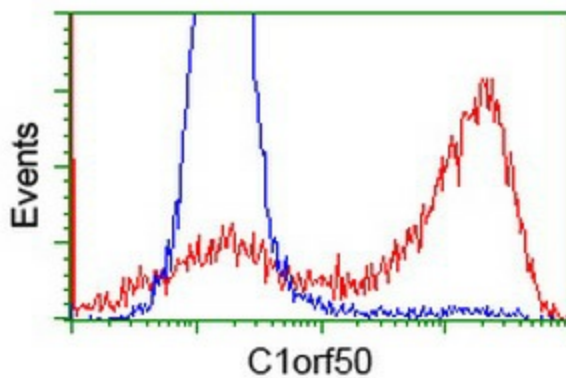
Product images:



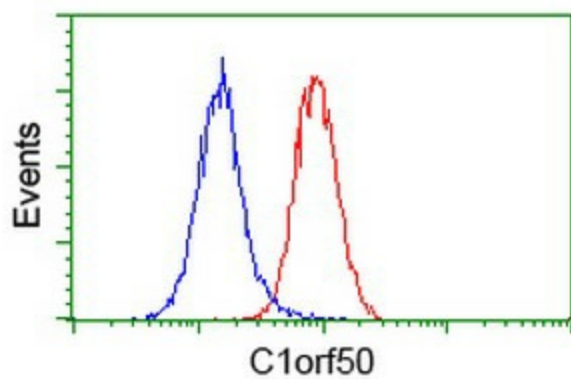
HEK293T cells were transfected with the pCMV6-ENTRY control (Left lane) or pCMV6-ENTRY C1orf50 ([RC200134], Right lane) cDNA for 48 hrs and lysed. Equivalent amounts of cell lysates (5 ug per lane) were separated by SDS-PAGE and immunoblotted with anti-C1orf50. Positive lysates [LY411368] (100ug) and [LC411368] (20ug) can be purchased separately from OriGene.



Anti-C1orf50 mouse monoclonal antibody (TA502903) immunofluorescent staining of COS7 cells transiently transfected by pCMV6-ENTRY C1orf50 ([RC200134]).



HEK293T cells transfected with either [RC200134] overexpress plasmid (Red) or empty vector control plasmid (Blue) were immunostained by anti-C1orf50 antibody (TA502903), and then analyzed by flow cytometry.



Flow cytometric Analysis of HeLa cells, using anti-C1orf50 antibody (TA502903), (Red), compared to a nonspecific negative control antibody, (Blue).