

Product datasheet for **TA502891**

eRF1 (ETF1) Mouse Monoclonal Antibody [Clone ID: OTI2E3]

Product data:

Product Type:	Primary Antibodies
Clone Name:	OTI2E3
Applications:	FC, WB
Recommended Dilution:	WB 1:500, FLOW 1:100
Reactivity:	Human, Mouse, Rat
Host:	Mouse
Isotype:	IgG2a
Clonality:	Monoclonal
Immunogen:	Full length human recombinant protein of human ETF1 (NP_004721) produced in HEK293T cell.
Formulation:	PBS (pH 7.3) containing 1% BSA, 50% glycerol and 0.02% sodium azide.
Concentration:	0.97 mg/ml
Purification:	Purified from mouse ascites fluids or tissue culture supernatant by affinity chromatography (protein A/G)
Conjugation:	Unconjugated
Storage:	Store at -20°C as received.
Stability:	Stable for 12 months from date of receipt.
Predicted Protein Size:	48.9 kDa
Gene Name:	eukaryotic translation termination factor 1
Database Link:	NP_004721 Entrez Gene 307503 Rat Entrez Gene 2107 Human P62495



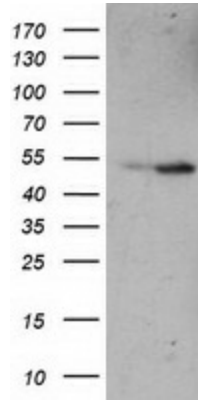
[View online »](#)

Background:

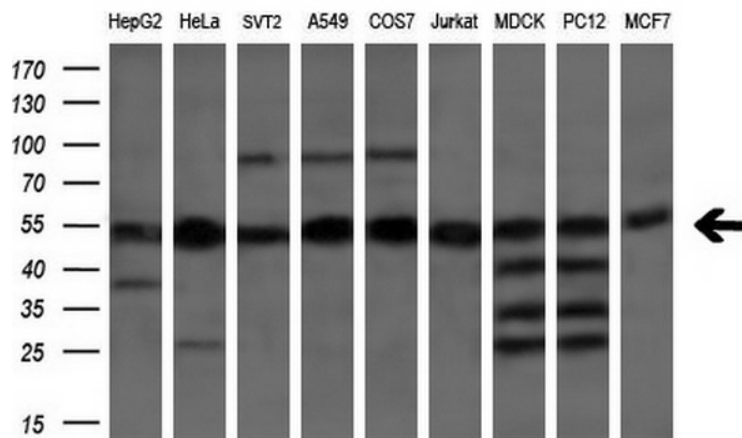
This gene encodes a class-1 polypeptide chain release factor. The encoded protein plays an essential role in directing termination of mRNA translation from the termination codons UAA, UAG and UGA. This protein is a component of the SURF complex which promotes degradation of prematurely terminated mRNAs via the mechanism of nonsense-mediated mRNA decay (NMD). Alternate splicing results in coding and non-coding transcript variants. Pseudogenes of this gene are found on chromosomes 5, 7 and X. [provided by RefSeq, Jan 2012]

Synonyms:

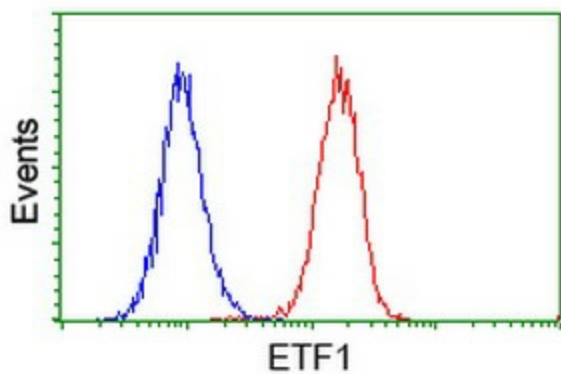
D5S1995; ERF; ERF1; RF1; SUP45L1; TB3-1

Product images:


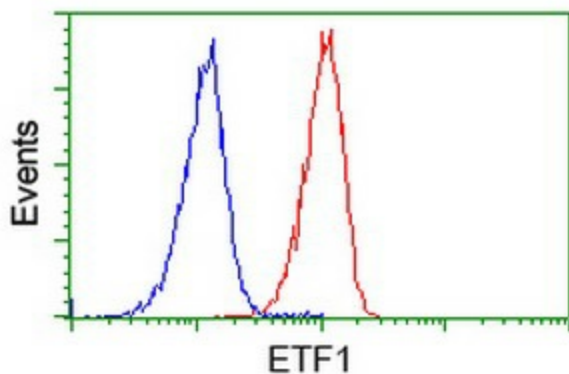
HEK293T cells were transfected with the pCMV6-ENTRY control (Cat# [PS100001], Left lane) or pCMV6-ENTRY ETF1 (Cat# [RC220387], Right lane) cDNA for 48 hrs and lysed. Equivalent amounts of cell lysates (5 ug per lane) were separated by SDS-PAGE and immunoblotted with anti-ETF1 (Cat# TA502891). Positive lysates [LY401492] (100ug) and [LC401492] (20ug) can be purchased separately from OriGene.



Western blot analysis of extracts (35ug) from 9 different cell lines by using anti-ETF1 monoclonal antibody (HepG2: human; HeLa: human; SVT2: mouse; A549: human; COS7: monkey; Jurkat: human; MDCK: canine; PC12: rat; MCF7: human) (1:200).



Flow cytometric Analysis of HeLa cells, using anti-ETF1 antibody (TA502891), (Red), compared to a nonspecific negative control antibody, (Blue).



Flow cytometric Analysis of Jurkat cells, using anti-ETF1 antibody (TA502891), (Red), compared to a nonspecific negative control antibody, (Blue).