

Product datasheet for **TA502888M**

Monoacylglycerol Lipase (MGLL) Mouse Monoclonal Antibody [Clone ID: OTI1H2]

Product data:

| | |
|-------------------------|---|
| Product Type: | Primary Antibodies |
| Clone Name: | OTI1H2 |
| Applications: | IHC, WB |
| Recommended Dilution: | WB 1:500~2000, IHC 1:150 |
| Reactivity: | Human |
| Host: | Mouse |
| Isotype: | IgG1 |
| Clonality: | Monoclonal |
| Immunogen: | Full length human recombinant protein of human MGLL(NP_009214) produced in HEK293T cell. |
| Formulation: | PBS (pH 7.3) containing 1% BSA, 50% glycerol and 0.02% sodium azide. |
| Concentration: | 0.86 mg/ml |
| Purification: | Purified from mouse ascites fluids or tissue culture supernatant by affinity chromatography (protein A/G) |
| Conjugation: | Unconjugated |
| Storage: | Store at -20°C as received. |
| Stability: | Stable for 12 months from date of receipt. |
| Predicted Protein Size: | 34.1 kDa |
| Gene Name: | monoglyceride lipase |
| Database Link: | NP_009214 Entrez Gene 11343 Human Q99685 |
| Background: | Monoglyceride lipase (MGLL; EC 3.1.1.23) functions together with hormone-sensitive lipase (LIPE; MIM 151750) to hydrolyze intracellular triglyceride stores in adipocytes and other cells to fatty acids and glycerol. MGLL may also complement lipoprotein lipase (LPL; MIM 238600) in completing hydrolysis of monoglycerides resulting from degradation of lipoprotein triglycerides (Karlsson et al., 2001 [PubMed 11470505]). [supplied by OMIM] |

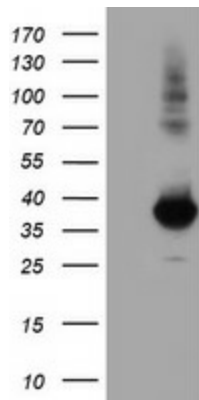

[View online »](#)

Synonyms: HU-K5; HUK5; MAGL; MGL

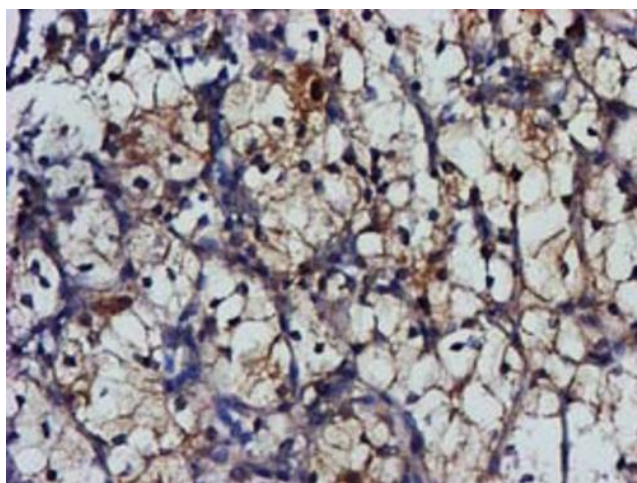
Protein Families: Druggable Genome, Protease

Protein Pathways: Glycerolipid metabolism, Metabolic pathways

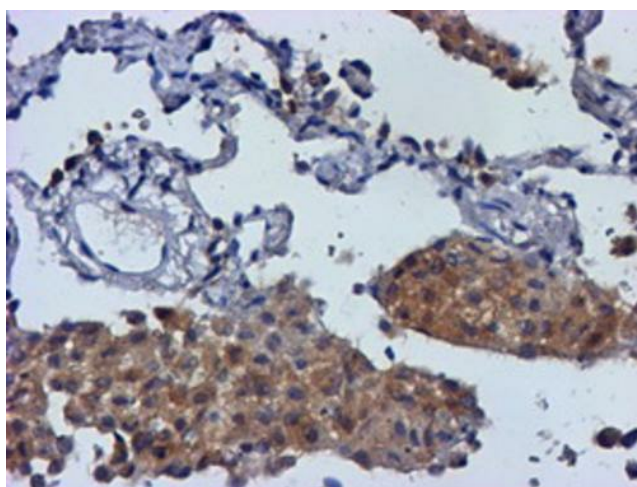
Product images:



HEK293T cells were transfected with the pCMV6-ENTRY control (Left lane) or pCMV6-ENTRY MGLL [RC218358], Right lane) cDNA for 48 hrs and lysed. Equivalent amounts of cell lysates (5 ug per lane) were separated by SDS-PAGE and immunoblotted with anti-MGLL. Positive lysates [LY402124] (100ug) and [LC402124] (20ug) can be purchased separately from OriGene.



Immunohistochemical staining of paraffin-embedded Carcinoma of Human kidney tissue using anti-MGLL mouse monoclonal antibody. Heat-induced epitope retrieval by EDTA solution buffer pH 8.0 at 120°C for 3 min.



Immunohistochemical staining of paraffin-embedded Carcinoma of Human lung tissue using anti-MGLL mouse monoclonal antibody. Heat-induced epitope retrieval by EDTA solution buffer pH 8.0 at 120°C for 3 min.