

Product datasheet for **TA502886BM**

Monoacylglycerol Lipase (MGLL) Mouse Monoclonal Antibody (HRP conjugated) [Clone ID: OTI2B11]

Product data:

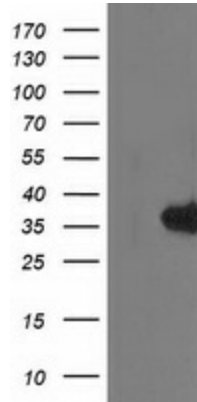
| | |
|-------------------------|---|
| Product Type: | Primary Antibodies |
| Clone Name: | OTI2B11 |
| Applications: | FC, IF, IHC, WB |
| Recommended Dilution: | WB 1:2000, IHC 1:150, IF 1:100, FLOW 1:100 |
| Reactivity: | Human |
| Host: | Mouse |
| Isotype: | IgG2a |
| Clonality: | Monoclonal |
| Immunogen: | Full length human recombinant protein of human MGLL (NP_009214) produced in HEK293T cell. |
| Formulation: | PBS (pH 7.3) containing 1% BSA, 50% glycerol. |
| Concentration: | 0.5 mg/ml |
| Purification: | Purified from mouse ascites fluids or tissue culture supernatant by affinity chromatography (protein A/G) |
| Conjugation: | HRP |
| Storage: | Store at -20°C as received. |
| Stability: | Stable for 12 months from date of receipt. |
| Predicted Protein Size: | 34.1 kDa |
| Gene Name: | monoglyceride lipase |
| Database Link: | NP_009214 Entrez Gene 11343 Human Q99685 |
| Background: | Monoglyceride lipase (MGLL; EC 3.1.1.23) functions together with hormone-sensitive lipase (LIPE; MIM 151750) to hydrolyze intracellular triglyceride stores in adipocytes and other cells to fatty acids and glycerol. MGLL may also complement lipoprotein lipase (LPL; MIM 238600) in completing hydrolysis of monoglycerides resulting from degradation of lipoprotein triglycerides (Karlsson et al., 2001 [PubMed 11470505]). [supplied by OMIM] |



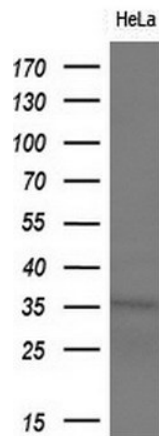
[View online »](#)

Synonyms: HU-K5; HUK5; MAGL; MGL
Protein Families: Druggable Genome, Protease
Protein Pathways: Glycerolipid metabolism, Metabolic pathways

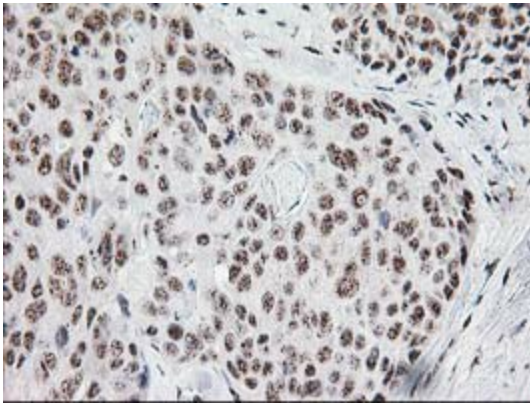
Product images:



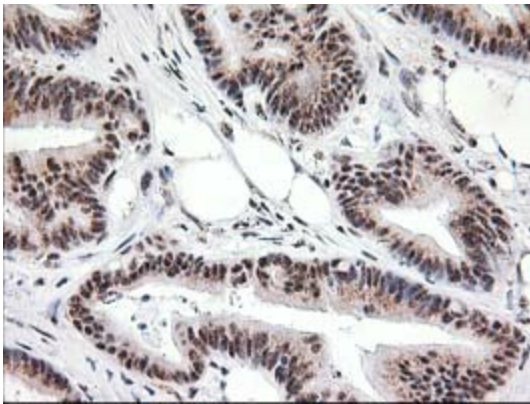
HEK293T cells were transfected with the pCMV6-ENTRY control (Left lane) or pCMV6-ENTRY MGLL ([RC218358], Right lane) cDNA for 48 hrs and lysed. Equivalent amounts of cell lysates (5 ug per lane) were separated by SDS-PAGE and immunoblotted with anti-MGLL ([TA502886]). Positive lysates [LY402124] (100ug) and [LC402124] (20ug) can be purchased separately from OriGene.



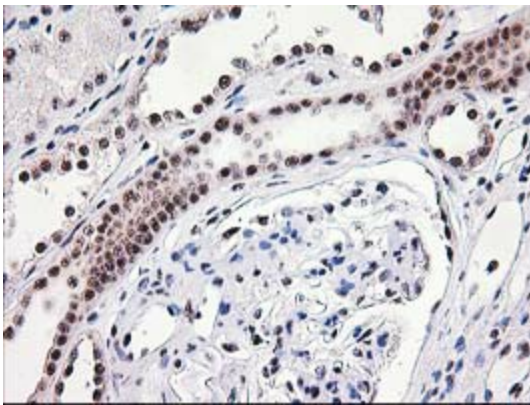
Western blot analysis of extracts (10ug) from 1 cell line by using anti-MGLL monoclonal antibody (1:200).



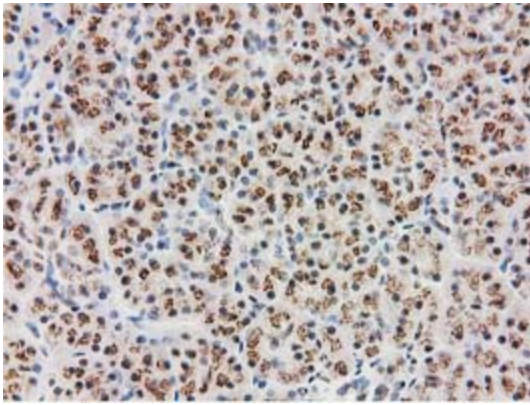
Immunohistochemical staining of paraffin-embedded Adenocarcinoma of Human breast tissue using anti-MGLL mouse monoclonal antibody. (Heat-induced epitope retrieval by 10mM citric buffer, pH6.0, 100°C for 10min, [TA502886])



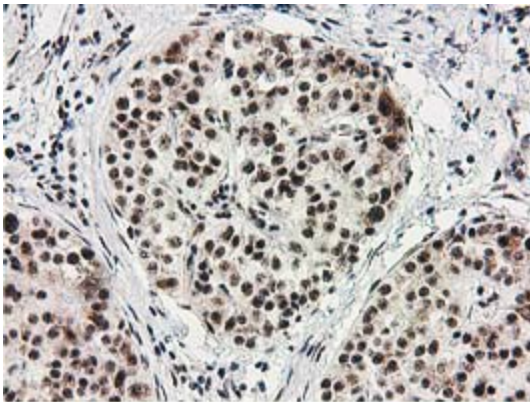
Immunohistochemical staining of paraffin-embedded Adenocarcinoma of Human colon tissue using anti-MGLL mouse monoclonal antibody. (Heat-induced epitope retrieval by 10mM citric buffer, pH6.0, 100°C for 10min, [TA502886])



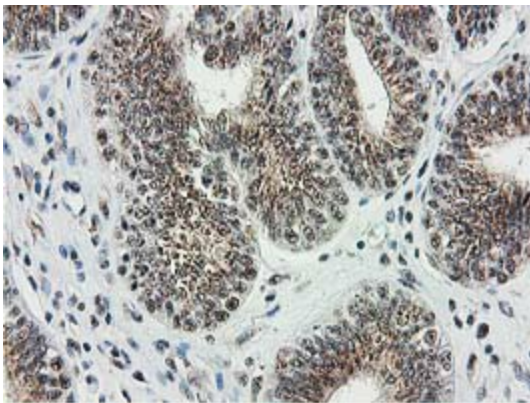
Immunohistochemical staining of paraffin-embedded Human Kidney tissue within the normal limits using anti-MGLL mouse monoclonal antibody. (Heat-induced epitope retrieval by 10mM citric buffer, pH6.0, 100°C for 10min, [TA502886])



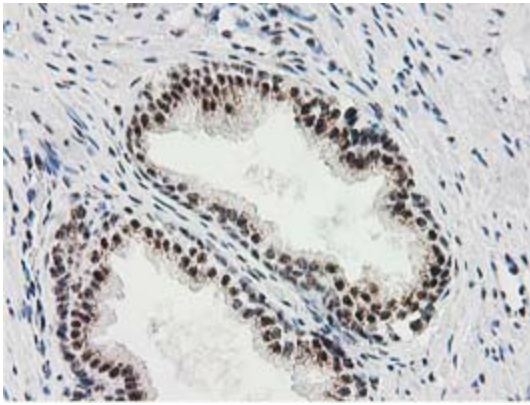
Immunohistochemical staining of paraffin-embedded Human pancreas tissue within the normal limits using anti-MGLL mouse monoclonal antibody. (Heat-induced epitope retrieval by 10mM citric buffer, pH6.0, 100°C for 10min, [TA502886])



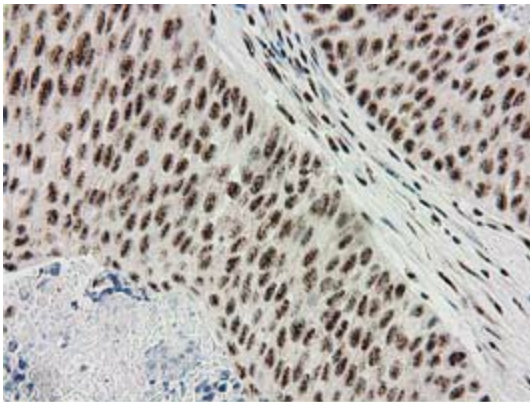
Immunohistochemical staining of paraffin-embedded Carcinoma of Human pancreas tissue using anti-MGLL mouse monoclonal antibody. (Heat-induced epitope retrieval by 10mM citric buffer, pH6.0, 100°C for 10min, [TA502886])



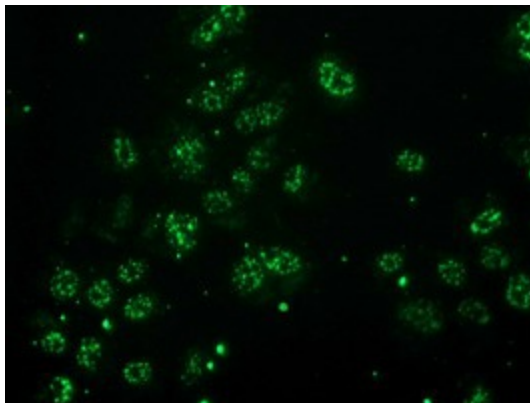
Immunohistochemical staining of paraffin-embedded Adenocarcinoma of Human endometrium tissue using anti-MGLL mouse monoclonal antibody. (Heat-induced epitope retrieval by 10mM citric buffer, pH6.0, 100°C for 10min, [TA502886])



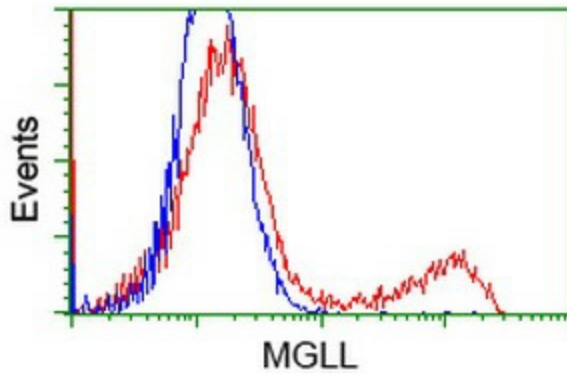
Immunohistochemical staining of paraffin-embedded Human prostate tissue within the normal limits using anti-MGLL mouse monoclonal antibody. (Heat-induced epitope retrieval by 10mM citric buffer, pH6.0, 100°C for 10min, [TA502886])



Immunohistochemical staining of paraffin-embedded Carcinoma of Human bladder tissue using anti-MGLL mouse monoclonal antibody. (Heat-induced epitope retrieval by 10mM citric buffer, pH6.0, 100°C for 10min, [TA502886])



Anti-MGLL mouse monoclonal antibody ([TA502886]) immunofluorescent staining of COS7 cells transiently transfected by pCMV6-ENTRY MGLL ([RC218358]).



HEK293T cells transfected with either [RC218358] overexpress plasmid (Red) or empty vector control plasmid (Blue) were immunostained by anti-MGLL antibody ([TA502886]), and then analyzed by flow cytometry.