

## Product datasheet for **TA502876M**

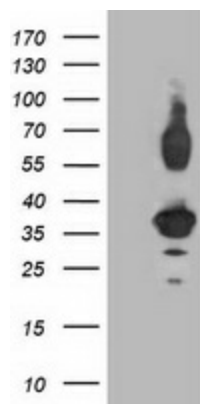
### PLEKHA3 Mouse Monoclonal Antibody [Clone ID: OTI6E4]

#### Product data:

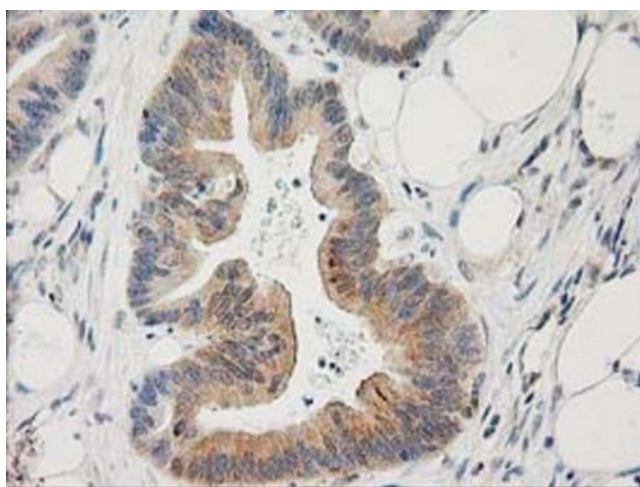
Product Type:	Primary Antibodies
Clone Name:	OTI6E4
Applications:	FC, IHC, WB
Recommended Dilution:	WB 1:2000, IHC 1:150, FLOW 1:100
Reactivity:	Human, Mouse, Rat
Host:	Mouse
Isotype:	IgG2a
Clonality:	Monoclonal
Immunogen:	Full length human recombinant protein of human PLEKHA3 (NP_061964) produced in HEK293T cell.
Formulation:	PBS (pH 7.3) containing 1% BSA, 50% glycerol and 0.02% sodium azide.
Concentration:	1 mg/ml
Purification:	Purified from mouse ascites fluids or tissue culture supernatant by affinity chromatography (protein A/G)
Conjugation:	Unconjugated
Storage:	Store at -20°C as received.
Stability:	Stable for 12 months from date of receipt.
Predicted Protein Size:	33.7 kDa
Gene Name:	pleckstrin homology domain containing A3
Database Link:	<a href="#">NP_061964</a> <a href="#">Entrez Gene 83435 Mouse</a> <a href="#">Entrez Gene 295674 Rat</a> <a href="#">Entrez Gene 65977 Human</a> <a href="#">Q9HB20</a>
Synonyms:	FAPP1


[View online »](#)

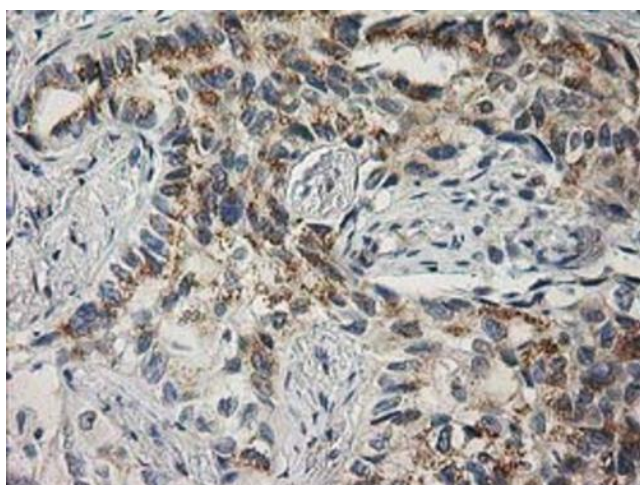
## Product images:



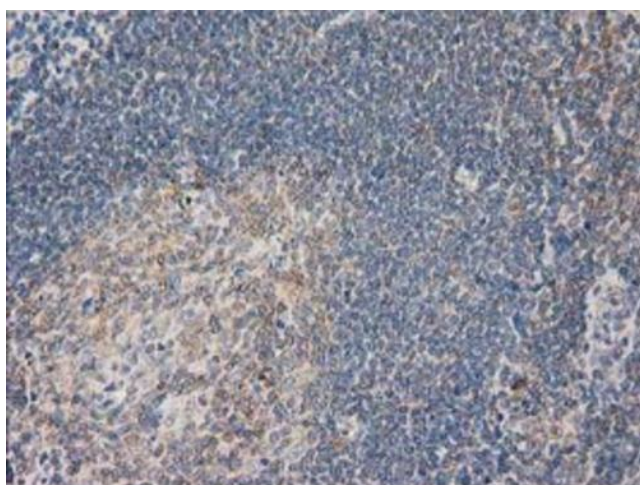
HEK293T cells were transfected with the pCMV6-ENTRY control (Left lane) or pCMV6-ENTRY PLEKHA3 ([RC208433], Right lane) cDNA for 48 hrs and lysed. Equivalent amounts of cell lysates (5 ug per lane) were separated by SDS-PAGE and immunoblotted with anti-PLEKHA3. Positive lysates [LY402733] (100ug) and [LC402733] (20ug) can be purchased separately from OriGene.



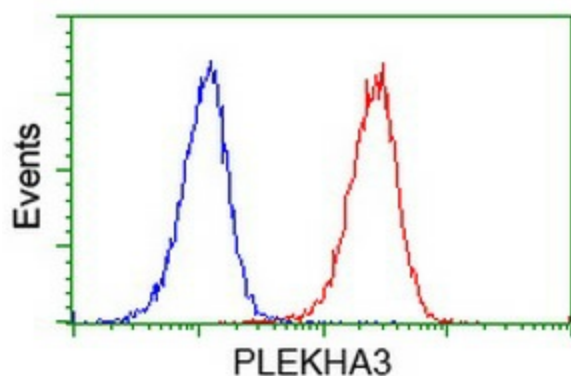
Immunohistochemical staining of paraffin-embedded Adenocarcinoma of Human colon tissue using anti-PLEKHA3 mouse monoclonal antibody. Heat-induced epitope retrieval by EDTA solution buffer pH 8.0 at 120°C for 3 min.



Immunohistochemical staining of paraffin-embedded Carcinoma of Human lung tissue using anti-PLEKHA3 mouse monoclonal antibody. Heat-induced epitope retrieval by EDTA solution buffer pH 8.0 at 120°C for 3 min.



Immunohistochemical staining of paraffin-embedded Human lymph node tissue within the normal limits using anti-PLEKHA3 mouse monoclonal antibody. Heat-induced epitope retrieval by EDTA solution buffer pH 8.0 at 120°C for 3 min.



Flow cytometric Analysis of Jurkat cells, using anti-PLEKHA3 antibody ([TA502876J]), (Red), compared to a nonspecific negative control antibody, (Blue).