

Product datasheet for **TA502875BM**

PLEKHA3 Mouse Monoclonal Antibody (HRP conjugated) [Clone ID: OTI2D1]

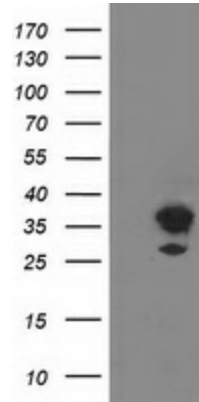
Product data:

Product Type:	Primary Antibodies
Clone Name:	OTI2D1
Applications:	FC, IF, WB
Recommended Dilution:	WB 1:2000, IF 1:100, FLOW 1:100
Reactivity:	Human, Mouse, Rat
Host:	Mouse
Isotype:	IgG1
Clonality:	Monoclonal
Immunogen:	Full length human recombinant protein of human PLEKHA3 (NP_061964) produced in HEK293T cell.
Formulation:	PBS (pH 7.3) containing 1% BSA, 50% glycerol.
Concentration:	0.5 mg/ml
Purification:	Purified from mouse ascites fluids or tissue culture supernatant by affinity chromatography (protein A/G)
Conjugation:	HRP
Storage:	Store at -20°C as received.
Stability:	Stable for 12 months from date of receipt.
Predicted Protein Size:	33.7 kDa
Gene Name:	pleckstrin homology domain containing A3
Database Link:	NP_061964 Entrez Gene 83435 Mouse Entrez Gene 295674 Rat Entrez Gene 65977 Human Q9HB20
Synonyms:	FAPP1

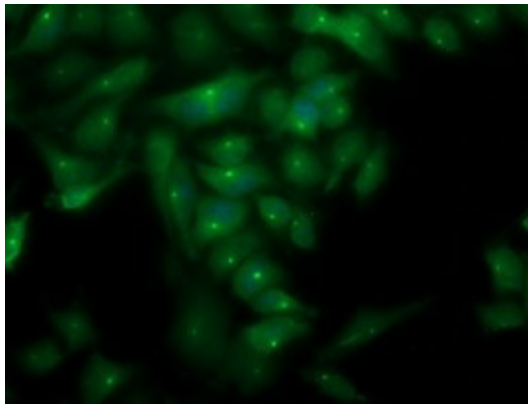


[View online »](#)

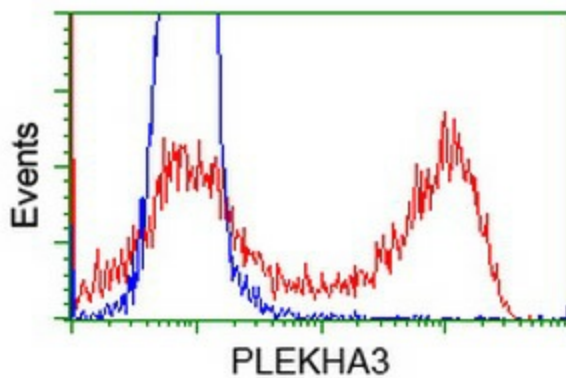
Product images:



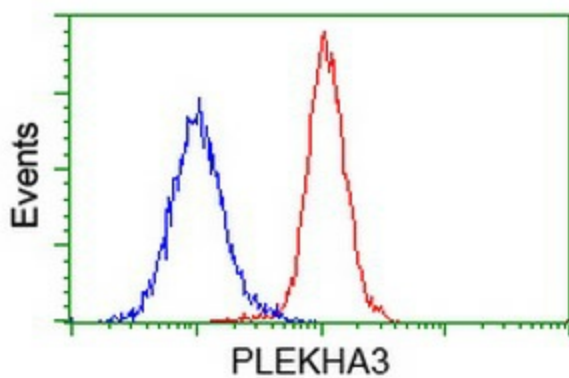
HEK293T cells were transfected with the pCMV6-ENTRY control (Left lane) or pCMV6-ENTRY PLEKHA3 ([RC208433], Right lane) cDNA for 48 hrs and lysed. Equivalent amounts of cell lysates (5 ug per lane) were separated by SDS-PAGE and immunoblotted with anti-PLEKHA3. Positive lysates [LY402733] (100ug) and [LC402733] (20ug) can be purchased separately from OriGene.



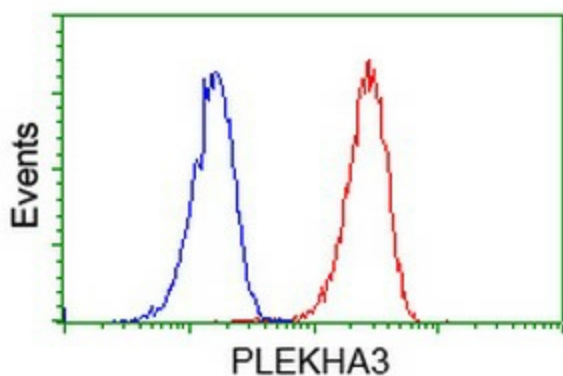
Immunofluorescent staining of HeLa cells using anti-PLEKHA3 mouse monoclonal antibody ([TA502875]).



HEK293T cells transfected with either [RC208433] overexpress plasmid (Red) or empty vector control plasmid (Blue) were immunostained by anti-PLEKHA3 antibody ([TA502875]), and then analyzed by flow cytometry.



Flow cytometric Analysis of HeLa cells, using anti-
PLEKHA3 antibody ([TA502875]), (Red), compared
to a nonspecific negative control antibody, (Blue).



Flow cytometric Analysis of Jurkat cells, using
anti-PLEKHA3 antibody ([TA502875]), (Red),
compared to a nonspecific negative control
antibody, (Blue).