

## Product datasheet for **TA502865S**

### PPM1B Mouse Monoclonal Antibody [Clone ID: OTI3F2]

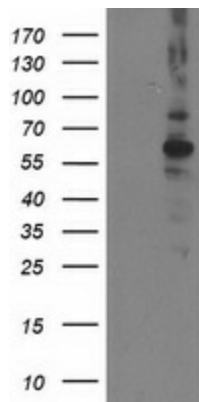
#### Product data:

Product Type:	Primary Antibodies
Clone Name:	OTI3F2
Applications:	FC, WB
Recommended Dilution:	WB 1:500~2000, FLOW 1:100
Reactivity:	Human, Dog, Rat, Monkey, Mouse
Host:	Mouse
Isotype:	IgG1
Clonality:	Monoclonal
Immunogen:	Full length human recombinant protein of human PPM1B (NP_002697) produced in HEK293T cell.
Formulation:	PBS (pH 7.3) containing 1% BSA, 50% glycerol and 0.02% sodium azide.
Concentration:	0.7 mg/ml
Purification:	Purified from mouse ascites fluids or tissue culture supernatant by affinity chromatography (protein A/G)
Conjugation:	Unconjugated
Storage:	Store at -20°C as received.
Stability:	Stable for 12 months from date of receipt.
Predicted Protein Size:	52.5 kDa
Gene Name:	protein phosphatase, Mg <sup>2+</sup> /Mn <sup>2+</sup> dependent 1B
Database Link:	<a href="#">NP_002697</a> <a href="#">Entrez Gene 19043 Mouse</a> <a href="#">Entrez Gene 24667 Rat</a> <a href="#">Entrez Gene 474573 Dog</a> <a href="#">Entrez Gene 713918 Monkey</a> <a href="#">Entrez Gene 5495 Human</a> <a href="#">O75688</a>
Synonyms:	PP2C-beta; PP2C-beta-X; PP2CB; PP2CBETA; PPC2BETAX
Protein Families:	Druggable Genome, Phosphatase, Stem cell - Pluripotency
Protein Pathways:	MAPK signaling pathway

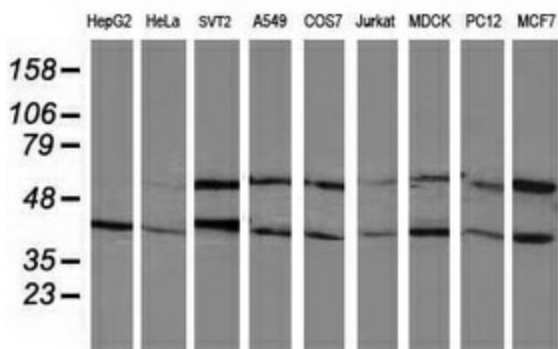


[View online »](#)

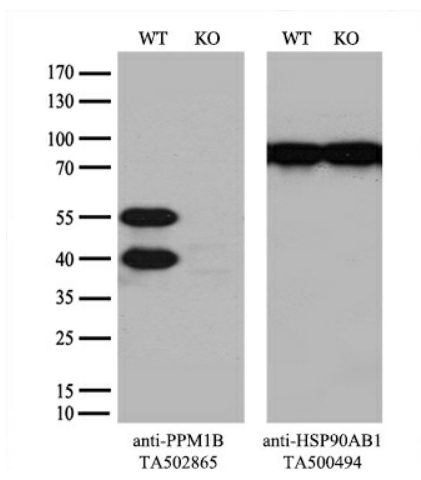
**Product images:**



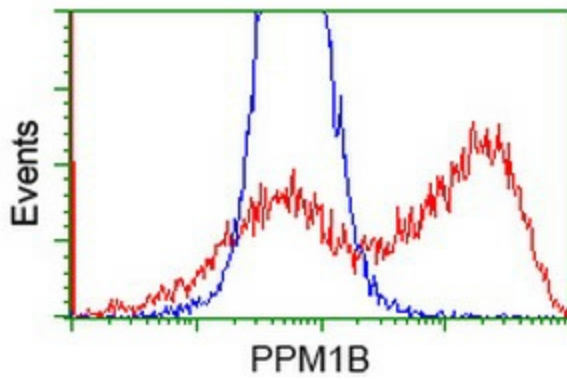
HEK293T cells were transfected with the pCMV6-ENTRY control (Left lane) or pCMV6-ENTRY PPM1B ([RC212918], Right lane) cDNA for 48 hrs and lysed. Equivalent amounts of cell lysates (5 ug per lane) were separated by SDS-PAGE and immunoblotted with anti-PPM1B. Positive lysates [LY419156] (100ug) and [LC419156] (20ug) can be purchased separately from OriGene.



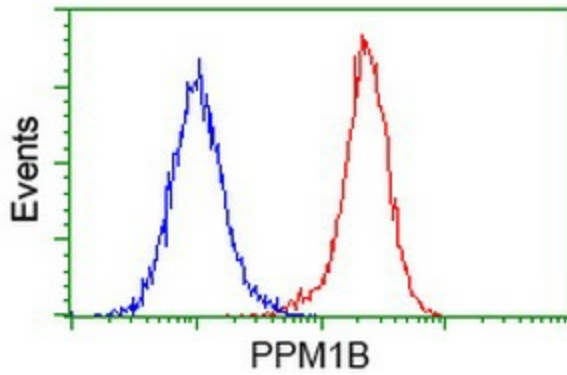
Western blot analysis of extracts (35ug) from 9 different cell lines by using anti-PPM1B monoclonal antibody.



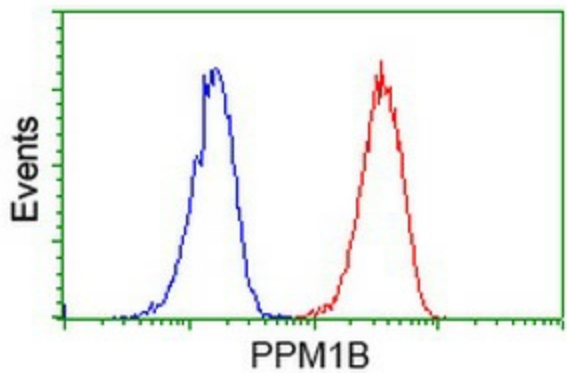
Equivalent amounts of cell lysates (10 ug per lane) of wild-type 293T cells (WT, Cat# LC810293T) and PPM1B-Knockout 293T cells (KO, Cat# [LC811002]) were separated by SDS-PAGE and immunoblotted with anti-PPM1B monoclonal antibody [TA502865], (1:500). Then the blotted membrane was stripped and reprobed with anti-HSP90AB1 antibody ([TA500494]) as a loading control.



HEK293T cells transfected with either [RC212918] overexpress plasmid (Red) or empty vector control plasmid (Blue) were immunostained by anti-PPM1B antibody ([TA502865]), and then analyzed by flow cytometry.



Flow cytometric Analysis of HeLa cells, using anti-PPM1B antibody ([TA502865]), (Red), compared to a nonspecific negative control antibody, (Blue).



Flow cytometric Analysis of Jurkat cells, using anti-PPM1B antibody ([TA502865]), (Red), compared to a nonspecific negative control antibody, (Blue).