

Product datasheet for **TA502864BM**

MRAS Mouse Monoclonal Antibody (HRP conjugated) [Clone ID: OTI3C4]

Product data:

Product Type:	Primary Antibodies
Clone Name:	OTI3C4
Applications:	FC, IF, WB
Recommended Dilution:	WB 1:2000, IF 1:100, FLOW 1:100
Reactivity:	Human, Mouse, Rat
Host:	Mouse
Isotype:	IgG2a
Clonality:	Monoclonal
Immunogen:	Full length human recombinant protein of human MRAS (NP_036351) produced in HEK293T cell.
Formulation:	PBS (pH 7.3) containing 1% BSA, 50% glycerol.
Concentration:	0.5 mg/ml
Purification:	Purified from mouse ascites fluids or tissue culture supernatant by affinity chromatography (protein A/G)
Conjugation:	HRP
Storage:	Store at -20°C as received.
Stability:	Stable for 12 months from date of receipt.
Predicted Protein Size:	23.7 kDa
Gene Name:	muscle RAS oncogene homolog
Database Link:	NP_036351 Entrez Gene 22808 Human O14807
Background:	Members of the RAS superfamily of GTP-binding proteins, which includes MRAS, are membrane-anchored, intracellular signal transducers responsible for a variety of normal cellular functions. They are oncogenically activated in a significant fraction of tumors. [supplied by OMIM]
Synonyms:	M-RAs; R-RAS3; RRAS3

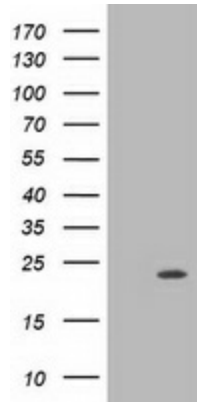


[View online »](#)

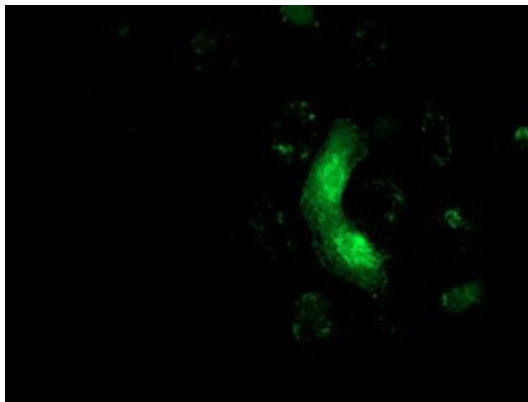
Protein Families: Druggable Genome

Protein Pathways: MAPK signaling pathway, Regulation of actin cytoskeleton, Tight junction

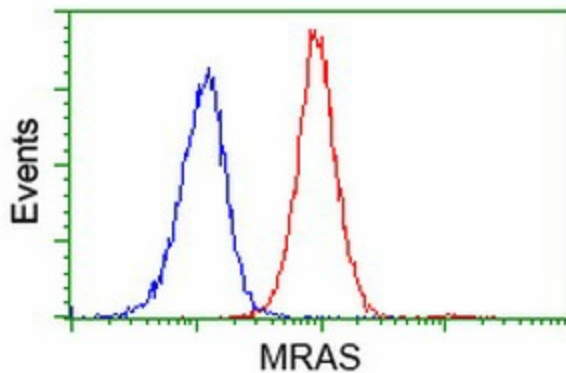
Product images:



HEK293T cells were transfected with the pCMV6-ENTRY control (Cat# [PS100001], Left lane) or pCMV6-ENTRY MRAS (Cat# [RC212259], Right lane) cDNA for 48 hrs and lysed. Equivalent amounts of cell lysates (5 ug per lane) were separated by SDS-PAGE and immunoblotted with anti-MRAS(Cat# [TA502864]). Positive lysates [LY415896] (100ug) and [LC415896] (20ug) can be purchased separately from OriGene.



Anti-MRAS mouse monoclonal antibody ([TA502864]) immunofluorescent staining of COS7 cells transiently transfected by pCMV6-ENTRY MRAS ([RC212259]).



Flow cytometric Analysis of Jurkat cells, using anti-MRAS antibody ([TA502864]), (Red), compared to a nonspecific negative control antibody, (Blue).