

Product datasheet for **TA502858AM**

EB2 (MAPRE2) Mouse Monoclonal Antibody (Biotin conjugated) [Clone ID: OTI1F3]

Product data:

Product Type:	Primary Antibodies
Clone Name:	OTI1F3
Applications:	FC, IF, IHC, WB
Recommended Dilution:	WB 1:2000, IHC 1:150, IF 1:100, FLOW 1:100
Reactivity:	Human
Host:	Mouse
Isotype:	IgG2a
Clonality:	Monoclonal
Immunogen:	Full length human recombinant protein of human MAPRE2 (NP_055083) produced in HEK293T cell.
Formulation:	PBS (pH 7.3) containing 1% BSA, 50% glycerol and 0.02% sodium azide.
Concentration:	0.5 mg/ml
Purification:	Purified from mouse ascites fluids or tissue culture supernatant by affinity chromatography (protein A/G)
Conjugation:	Biotin
Storage:	Store at -20°C as received.
Stability:	Stable for 12 months from date of receipt.
Predicted Protein Size:	36.9 kDa
Gene Name:	microtubule associated protein RP/EB family member 2
Database Link:	NP_055083 Entrez Gene 10982 Human Q15555
Background:	The protein encoded by this gene shares significant homology to the adenomatous polyposis coli (APC) protein-binding EB1 gene family. The function of this protein is unknown; however, its homology suggests involvement in tumorigenesis of colorectal cancers and proliferative control of normal cells. This gene may belong to the intermediate/early gene family, involved in the signal transduction cascade downstream of the TCR. Alternative splicing results in multiple transcript variants. [provided by RefSeq]

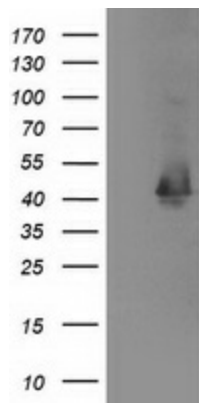


[View online »](#)

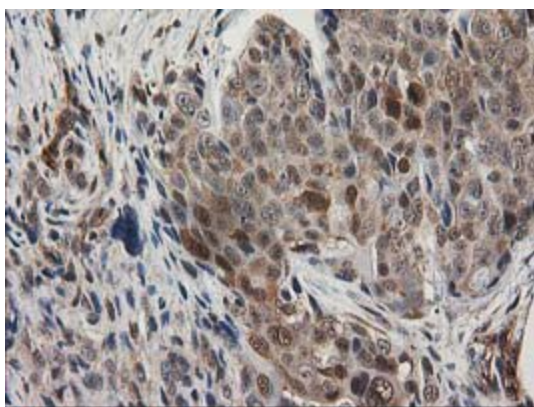
Synonyms: EB1; EB2; RP1

Protein Families: Druggable Genome

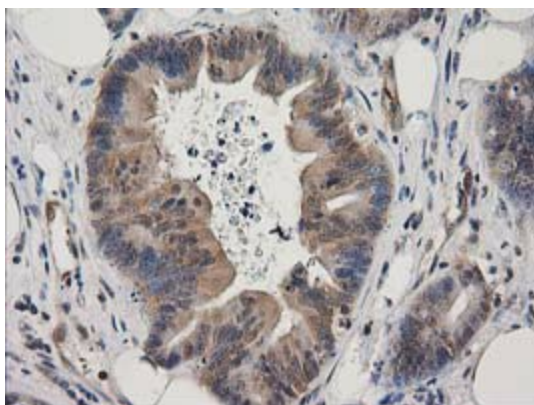
Product images:



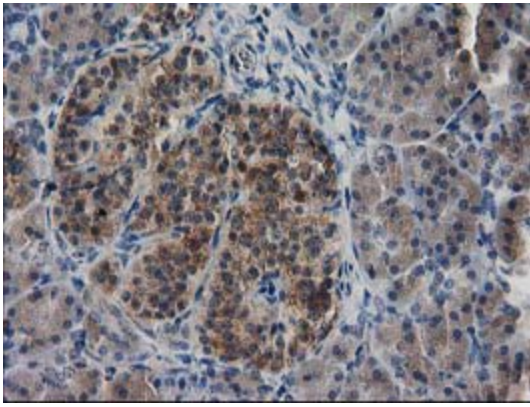
HEK293T cells were transfected with the pCMV6-ENTRY control (Left lane) or pCMV6-ENTRY MAPRE2 ([RC200259], Right lane) cDNA for 48 hrs and lysed. Equivalent amounts of cell lysates (5 ug per lane) were separated by SDS-PAGE and immunoblotted with anti-MAPRE2. Positive lysates [LY415395] (100ug) and [LC415395] (20ug) can be purchased separately from OriGene.



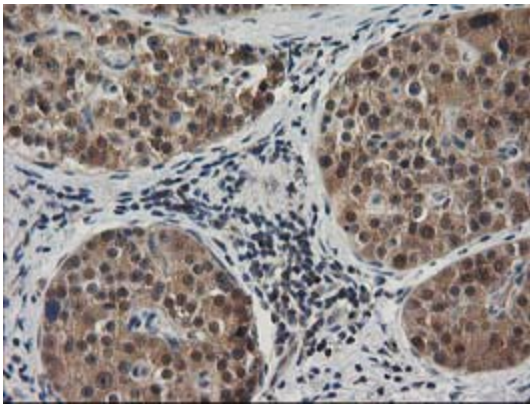
Immunohistochemical staining of paraffin-embedded Adenocarcinoma of Human breast tissue using anti-MAPRE2 mouse monoclonal antibody. (Heat-induced epitope retrieval by 10mM citric buffer, pH6.0, 100°C for 10min, [TA502858])



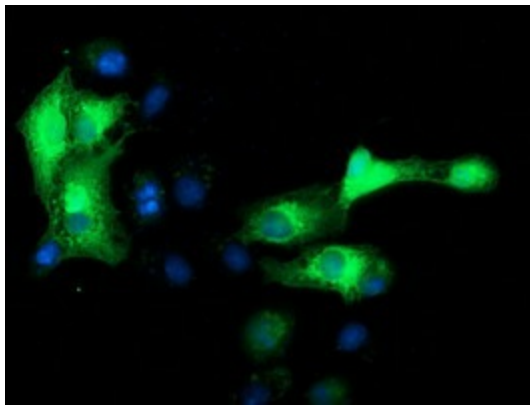
Immunohistochemical staining of paraffin-embedded Adenocarcinoma of Human colon tissue using anti-MAPRE2 mouse monoclonal antibody. (Heat-induced epitope retrieval by 10mM citric buffer, pH6.0, 100°C for 10min, [TA502858])



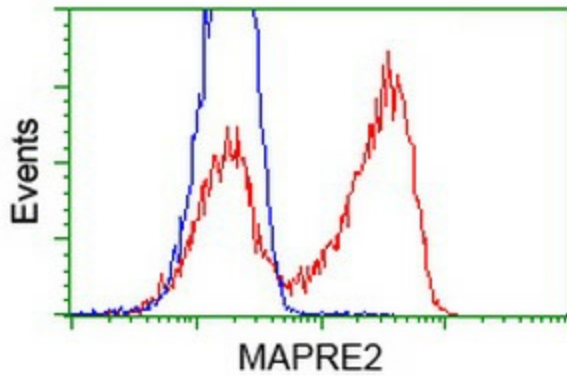
Immunohistochemical staining of paraffin-embedded Human pancreas tissue within the normal limits using anti-MAPRE2 mouse monoclonal antibody. (Heat-induced epitope retrieval by 10mM citric buffer, pH6.0, 100°C for 10min, [TA502858])



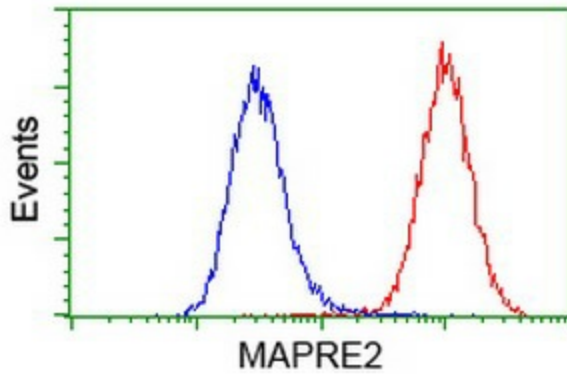
Immunohistochemical staining of paraffin-embedded Carcinoma of Human pancreas tissue using anti-MAPRE2 mouse monoclonal antibody. (Heat-induced epitope retrieval by 10mM citric buffer, pH6.0, 100°C for 10min, [TA502858])



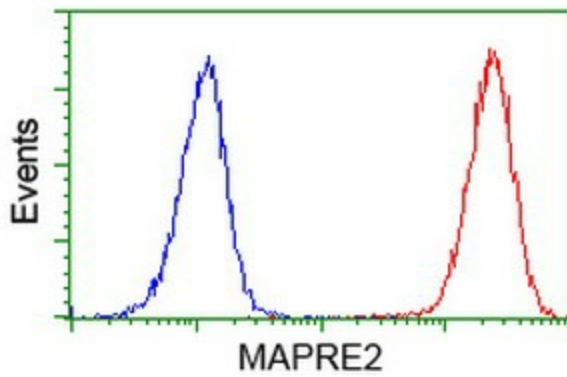
Anti-MAPRE2 mouse monoclonal antibody ([TA502858]) immunofluorescent staining of COS7 cells transiently transfected by pCMV6-ENTRY MAPRE2 ([RC200259]).



HEK293T cells transfected with either [RC200259] overexpress plasmid (Red) or empty vector control plasmid (Blue) were immunostained by anti-MAPRE2 antibody ([TA502858]), and then analyzed by flow cytometry.



Flow cytometric Analysis of HeLa cells, using anti-MAPRE2 antibody ([TA502858]), (Red), compared to a nonspecific negative control antibody, (Blue).



Flow cytometric Analysis of Jurkat cells, using anti-MAPRE2 antibody ([TA502858]), (Red), compared to a nonspecific negative control antibody, (Blue).