

## Product datasheet for **TA502845S**

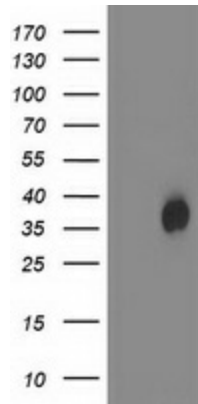
### HDHD2 Mouse Monoclonal Antibody [Clone ID: OTI 3A12]

#### Product data:

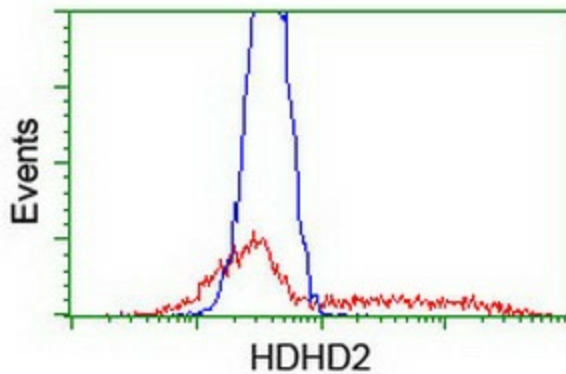
|                         |   |
|-------------------------|---|
| Product Type:           | Primary Antibodies  |
| Clone Name:             | OTI 3A12  |
| Applications:           | FC, WB  |
| Recommended Dilution:   | WB 1:2000, FLOW 1:100   |
| Reactivity:             | Human, Mouse, Rat   |
| Host:                   | Mouse   |
| Isotype:                | IgG1  |
| Clonality:              | Monoclonal  |
| Immunogen:              | Full length human recombinant protein of human HDHD2(NP_115500) produced in HEK293T cell.                 |
| Formulation:            | PBS (pH 7.3) containing 1% BSA, 50% glycerol and 0.02% sodium azide.                                      |
| Concentration:          | 0.97 mg/ml  |
| Purification:           | Purified from mouse ascites fluids or tissue culture supernatant by affinity chromatography (protein A/G) |
| Conjugation:            | Unconjugated  |
| Storage:                | Store at -20°C as received.   |
| Stability:              | Stable for 12 months from date of receipt.  |
| Predicted Protein Size: | 28.4 kDa  |
| Gene Name:              | haloacid dehalogenase like hydrolase domain containing 2  |
| Database Link:          | <a href="#">NP_115500</a><br><a href="#">Entrez Gene 84064 Human</a><br><a href="#">Q9HOR4</a>            |
| Synonyms:               | 3110052N05Rik; HEL-S-301  |



[View online »](#)

**Product images:**

HEK293T cells were transfected with the pCMV6-ENTRY control (Left lane) or pCMV6-ENTRY HDHD2 ([RC205967], Right lane) cDNA for 48 hrs and lysed. Equivalent amounts of cell lysates (5 ug per lane) were separated by SDS-PAGE and immunoblotted with anti-HDHD2. Positive lysates [LY403144] (100ug) and [LC403144] (20ug) can be purchased separately from OriGene.



HEK293T cells transfected with either [RC205967] overexpress plasmid (Red) or empty vector control plasmid (Blue) were immunostained by anti-HDHD2 antibody ([TA502845]), and then analyzed by flow cytometry.