

Product datasheet for **TA502842**

ALDH1A3 Mouse Monoclonal Antibody [Clone ID: OTI4B4]

Product data:

| | |
|-------------------------|--|
| Product Type: | Primary Antibodies |
| Clone Name: | OTI4B4 |
| Applications: | IHC, WB |
| Recommended Dilution: | WB 1:200~2000, IHC 1:150 |
| Reactivity: | Human, Mouse, Rat |
| Host: | Mouse |
| Isotype: | IgG1 |
| Clonality: | Monoclonal |
| Immunogen: | Human recombinant protein fragment corresponding to amino acids 1-100 and 413-512 of human ALDH1A3 (NP_000648) produced in E.coli. |
| Formulation: | PBS (pH 7.3) containing 1% BSA, 50% glycerol and 0.02% sodium azide. |
| Concentration: | 0.43 mg/ml |
| Purification: | Purified from mouse ascites fluids or tissue culture supernatant by affinity chromatography (protein A/G) |
| Conjugation: | Unconjugated |
| Storage: | Store at -20°C as received. |
| Stability: | Stable for 12 months from date of receipt. |
| Predicted Protein Size: | 55.9 kDa |
| Gene Name: | aldehyde dehydrogenase 1 family member A3 |
| Database Link: | NP_000684 Entrez Gene 220 Human P47895 |
| Background: | Aldehyde dehydrogenase isozymes are thought to play a major role in the detoxification of aldehydes generated by alcohol metabolism and lipid peroxidation. The enzyme encoded by this gene uses retinal as a substrate, either in a free or cellular retinol-binding protein form. [provided by RefSeq, Jul 2008] |
| Synonyms: | ALDH1A6; ALDH6; MCOP8; RALDH3 |

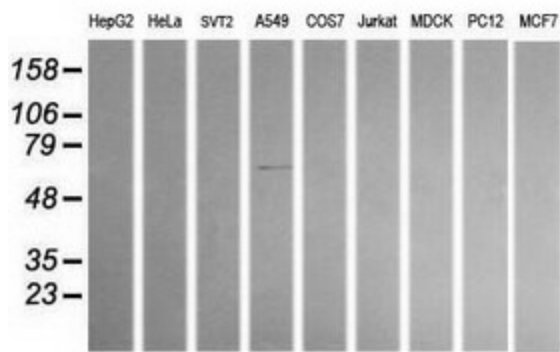


[View online »](#)

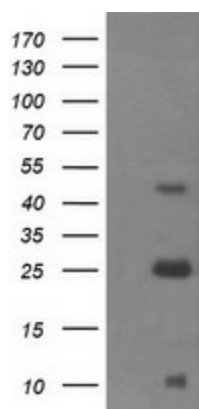
Protein Families: Druggable Genome

Protein Pathways: Drug metabolism - cytochrome P450, Glycolysis / Gluconeogenesis, Histidine metabolism, Metabolic pathways, Metabolism of xenobiotics by cytochrome P450, Phenylalanine metabolism, Tyrosine metabolism

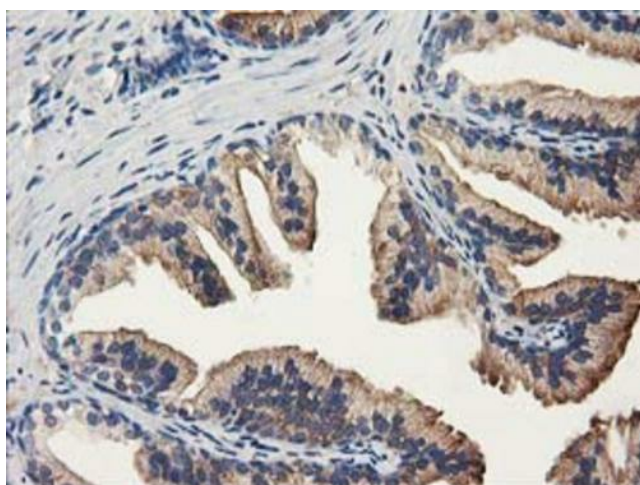
Product images:



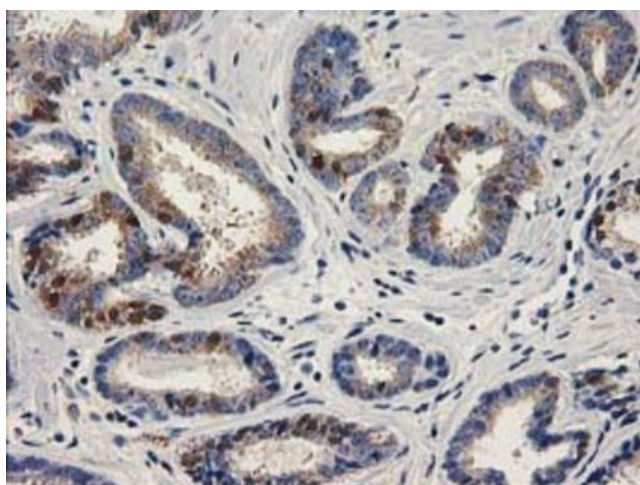
Western blot analysis of extracts (35ug) from 9 different cell lines by using anti-ALDH1A3 monoclonal antibody (HepG2: human; HeLa: human; SVT2: mouse; A549: human; COS7: monkey; Jurkat: human; MDCK: canine; PC12: rat; MCF7: human).



Negative control *E. coli* lysate (Left lane) or *E. coli* lysate containing recombinant protein fragment for human ALDH1A3 (NP_000648) gene (the fusion of amino acids 1-100 and 413-512) (Right lane). Equivalent amounts (5 ug per lane) were separated by SDS-PAGE and then immunoblotted with anti-ALDH1A3.



Immunohistochemical staining of paraffin-embedded Human prostate tissue within the normal limits using anti-ALDH1A3 mouse monoclonal antibody. Heat-induced epitope retrieval by EDTA solution buffer pH 8.0 at 120°C for 3 min.



Immunohistochemical staining of paraffin-embedded Carcinoma of Human prostate tissue using anti-ALDH1A3 mouse monoclonal antibody. Heat-induced epitope retrieval by EDTA solution buffer pH 8.0 at 120°C for 3 min.