

## Product datasheet for **TA502840M**

### **ALDH1A3 Mouse Monoclonal Antibody [Clone ID: OTI4A3]**

#### **Product data:**

|                         |  |
|-------------------------|--|
| Product Type:           | Primary Antibodies   |
| Clone Name:             | OTI4A3   |
| Applications:           | IHC, WB  |
| Recommended Dilution:   | WB 1:200~2000, IHC 1:150   |
| Reactivity:             | Human, Mouse, Rat  |
| Host:                   | Mouse  |
| Isotype:                | IgG1   |
| Clonality:              | Monoclonal   |
| Immunogen:              | Human recombinant protein fragment corresponding to amino acids 1-100 and 413-512 of human ALDH1A3 (NP_000648) produced in E.coli.   |
| Formulation:            | PBS (pH 7.3) containing 1% BSA, 50% glycerol and 0.02% sodium azide.   |
| Concentration:          | 0.5 mg/ml  |
| Purification:           | Purified from mouse ascites fluids or tissue culture supernatant by affinity chromatography (protein A/G)  |
| Conjugation:            | Unconjugated   |
| Storage:                | Store at -20°C as received.  |
| Stability:              | Stable for 12 months from date of receipt.   |
| Predicted Protein Size: | 55.9 kDa   |
| Gene Name:              | aldehyde dehydrogenase 1 family member A3  |
| Database Link:          | <a href="#">NP_000684</a><br><a href="#">Entrez Gene 220 Human</a><br><a href="#">P47895</a>   |
| Background:             | Aldehyde dehydrogenase isozymes are thought to play a major role in the detoxification of aldehydes generated by alcohol metabolism and lipid peroxidation. The enzyme encoded by this gene uses retinal as a substrate, either in a free or cellular retinol-binding protein form. [provided by RefSeq, Jul 2008] |
| Synonyms:               | ALDH1A6; ALDH6; MCOP8; RALDH3  |

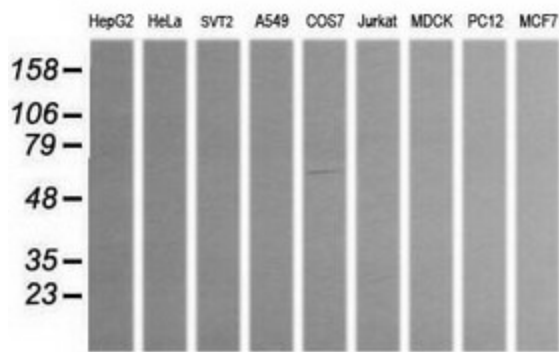


[View online »](#)

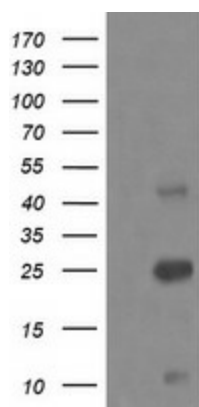
**Protein Families:** Druggable Genome

**Protein Pathways:** Drug metabolism - cytochrome P450, Glycolysis / Gluconeogenesis, Histidine metabolism, Metabolic pathways, Metabolism of xenobiotics by cytochrome P450, Phenylalanine metabolism, Tyrosine metabolism

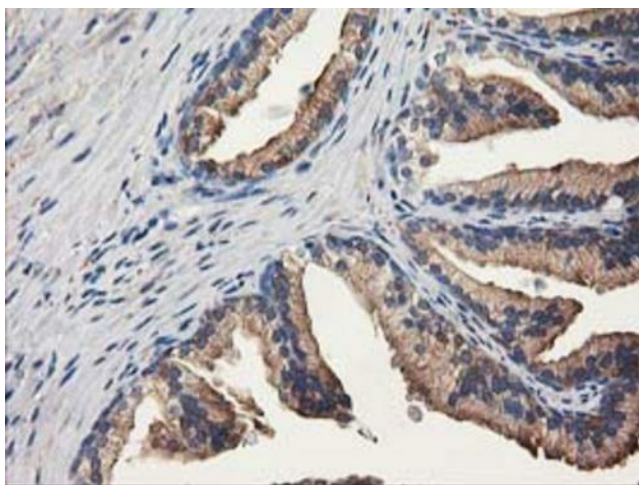
## Product images:



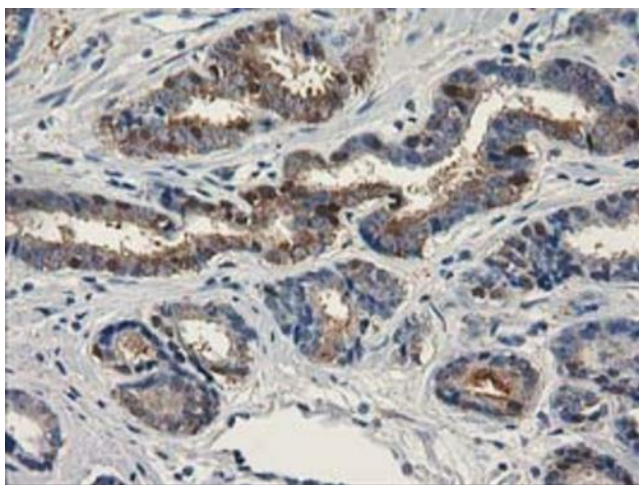
Western blot analysis of extracts (35ug) from 9 different cell lines by using anti-ALDH1A3 monoclonal antibody (HepG2: human; HeLa: human; SVT2: mouse; A549: human; COS7: monkey; Jurkat: human; MDCK: canine; PC12: rat; MCF7: human).



Negative control E. coli lysate (Left lane) or E. coli lysate containing recombinant protein fragment for human ALDH1A3 (NP\_000648) gene (the fusion of amino acids 1-100 and 413-512) (Right lane). Equivalent amounts (5 ug per lane) were separated by SDS-PAGE and then immunoblotted with anti-ALDH1A3.



Immunohistochemical staining of paraffin-embedded Human prostate tissue within the normal limits using anti-ALDH1A3 mouse monoclonal antibody. Heat-induced epitope retrieval by EDTA solution buffer pH 8.0 at 120°C for 3 min.



Immunohistochemical staining of paraffin-embedded Carcinoma of Human prostate tissue using anti-ALDH1A3 mouse monoclonal antibody. Heat-induced epitope retrieval by EDTA solution buffer pH 8.0 at 120°C for 3 min.