

Product datasheet for **TA502835**

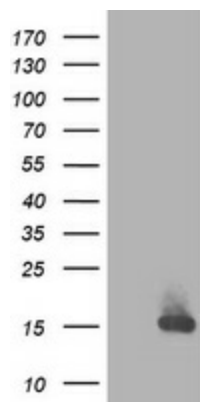
RBP1 Mouse Monoclonal Antibody [Clone ID: OTI2E1]

Product data:

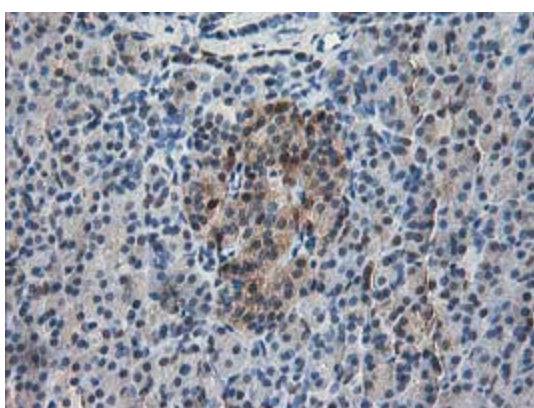
Product Type:	Primary Antibodies
Clone Name:	OTI2E1
Applications:	FC, IF, IHC, WB
Recommended Dilution:	WB 1:2000, IHC 1:150, IF 1:100, FLOW 1:100
Reactivity:	Human, Mouse, Rat
Host:	Mouse
Isotype:	IgG2a
Clonality:	Monoclonal
Immunogen:	Full length human recombinant protein of human RBP1(NP_002890) produced in HEK293T cell.
Formulation:	PBS (pH 7.3) containing 1% BSA, 50% glycerol and 0.02% sodium azide.
Concentration:	0.94 mg/ml
Purification:	Purified from mouse ascites fluids or tissue culture supernatant by affinity chromatography (protein A/G)
Conjugation:	Unconjugated
Storage:	Store at -20°C as received.
Stability:	Stable for 12 months from date of receipt.
Predicted Protein Size:	15.7 kDa
Gene Name:	retinol binding protein 1
Database Link:	NP_002890 Entrez Gene 19659 Mouse Entrez Gene 25056 Rat Entrez Gene 5947 Human P09455
Background:	This gene encodes the carrier protein involved in the transport of retinol (vitamin A alcohol) from the liver storage site to peripheral tissue. Vitamin A is a fat-soluble vitamin necessary for growth, reproduction, differentiation of epithelial tissues, and vision. Multiple transcript variants encoding different isoforms have been found for this gene. [provided by RefSeq]
Synonyms:	CRABP-I; CRBP; CRBP1; CRBPI; RBPC



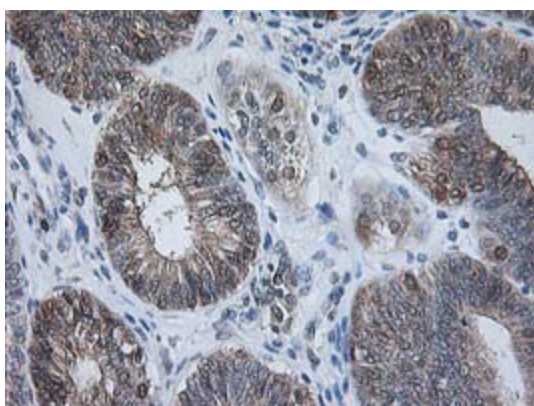
[View online »](#)

Product images:

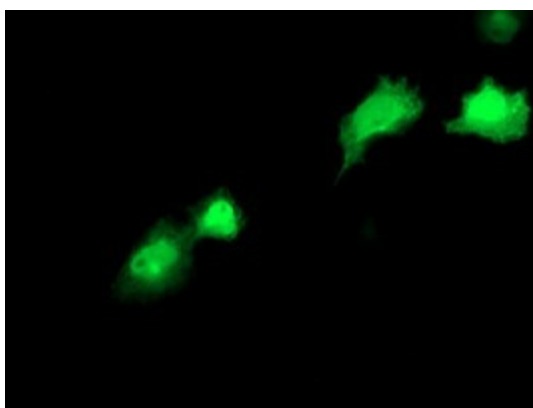
HEK293T cells were transfected with the pCMV6-ENTRY control (Cat# [PS100001], Left lane) or pCMV6-ENTRY RBP1 (Cat# [RC214515], Right lane) cDNA for 48 hrs and lysed. Equivalent amounts of cell lysates (5 ug per lane) were separated by SDS-PAGE and immunoblotted with anti-RBP1 (Cat# TA502835). Positive lysates [LY401017] (100ug) and [LC401017] (20ug) can be purchased separately from OriGene.



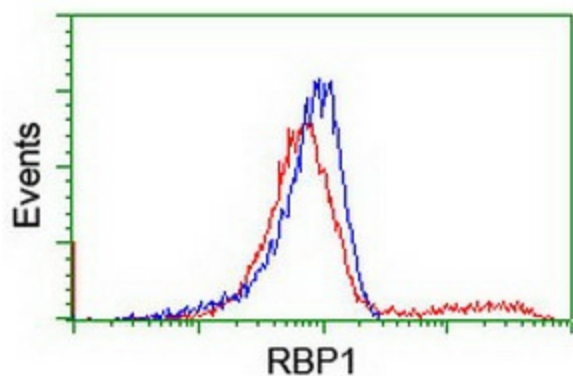
Immunohistochemical staining of paraffin-embedded Human pancreas tissue within the normal limits using anti-RBP1 mouse monoclonal antibody. (Heat-induced epitope retrieval by 10mM citric buffer, pH6.0, 100°C for 10min, TA502835)



Immunohistochemical staining of paraffin-embedded Adenocarcinoma of Human endometrium tissue using anti-RBP1 mouse monoclonal antibody. (Heat-induced epitope retrieval by 10mM citric buffer, pH6.0, 100°C for 10min, TA502835)



Anti-RBP1 mouse monoclonal antibody (TA502835) immunofluorescent staining of COS7 cells transiently transfected by pCMV6-ENTRY RBP1 ([RC214515]).



HEK293T cells transfected with either [RC214515] overexpress plasmid (Red) or empty vector control plasmid (Blue) were immunostained by anti-RBP1 antibody (TA502835), and then analyzed by flow cytometry.