

Product datasheet for **TA502834M**

HDHD2 Mouse Monoclonal Antibody [Clone ID: OTI4G3]

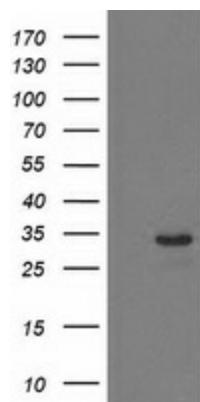
Product data:

Product Type:	Primary Antibodies
Clone Name:	OTI4G3
Applications:	FC, IHC, WB
Recommended Dilution:	WB 1:500~2000, IHC 1:150, FLOW 1:100
Reactivity:	Human, Mouse, Rat
Host:	Mouse
Isotype:	IgG1
Clonality:	Monoclonal
Immunogen:	Full length human recombinant protein of human HDHD2(NP_115500) produced in HEK293T cell.
Formulation:	PBS (pH 7.3) containing 1% BSA, 50% glycerol and 0.02% sodium azide.
Concentration:	1 mg/ml
Purification:	Purified from mouse ascites fluids or tissue culture supernatant by affinity chromatography (protein A/G)
Conjugation:	Unconjugated
Storage:	Store at -20°C as received.
Stability:	Stable for 12 months from date of receipt.
Predicted Protein Size:	28.4 kDa
Gene Name:	haloacid dehalogenase like hydrolase domain containing 2
Database Link:	NP_115500 Entrez Gene 84064 Human Q9H0R4
Synonyms:	3110052N05Rik; HEL-S-301

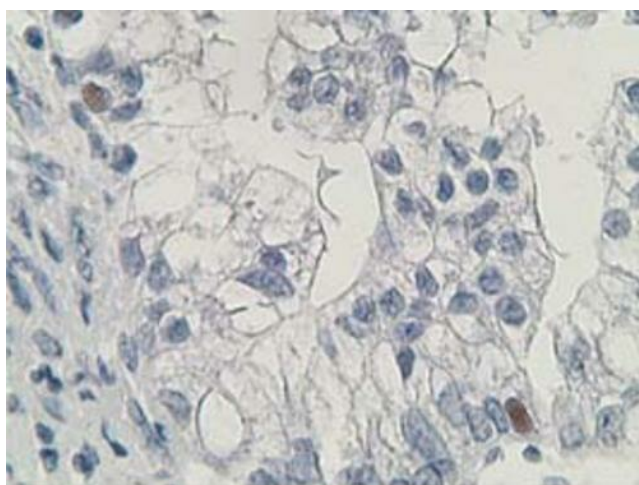


[View online »](#)

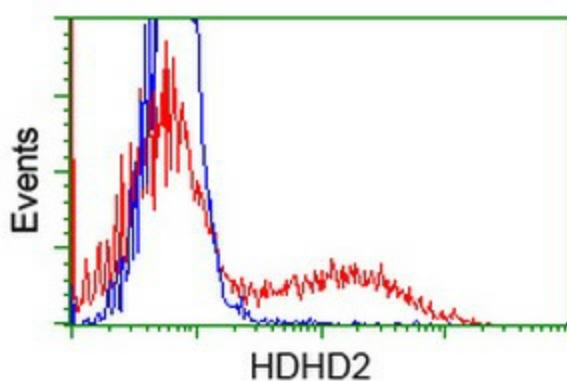
Product images:



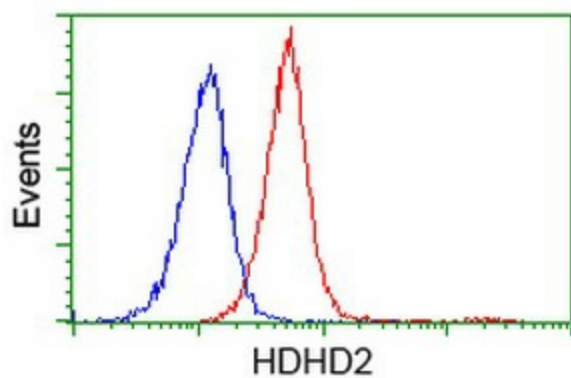
HEK293T cells were transfected with the pCMV6-ENTRY control (Left lane) or pCMV6-ENTRY HDHD2 ([RC205967], Right lane) cDNA for 48 hrs and lysed. Equivalent amounts of cell lysates (5 ug per lane) were separated by SDS-PAGE and immunoblotted with anti-HDHD2. Positive lysates [LY403144] (100ug) and [LC403144] (20ug) can be purchased separately from OriGene.



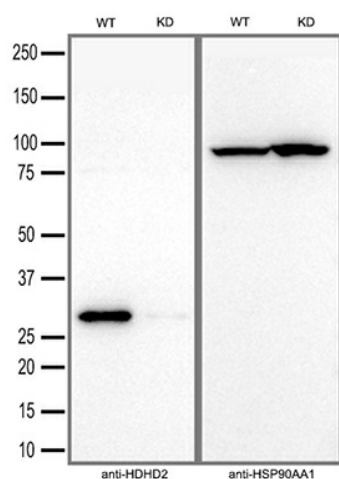
Immunohistochemical staining of paraffin-embedded Adenocarcinoma of Human ovary tissue using anti-HDHD2 mouse monoclonal antibody. Heat-induced epitope retrieval by EDTA solution buffer pH 8.0 at 120°C for 3 min.



HEK293T cells transfected with either [RC205967] overexpress plasmid (Red) or empty vector control plasmid (Blue) were immunostained by anti-HDHD2 antibody ([TA502834]), and then analyzed by flow cytometry.



Flow cytometric Analysis of Jurkat cells, using anti-HDHD2 antibody ([TA502834]), (Red), compared to a nonspecific negative control antibody, (Blue).



Equivalent amounts of cell lysates (30 ug per lane) of wild-type HeLa cells (WT) and HDHD2-Knockdown HeLa cells (KD) were separated by SDS-PAGE and immunoblotted with anti-HDHD2 monoclonal antibody [TA502834] (1:2500). Then the blotted membrane was stripped and reprobed with anti-HSP90AA1 antibody as a loading control.