

## Product datasheet for **TA502834AM**

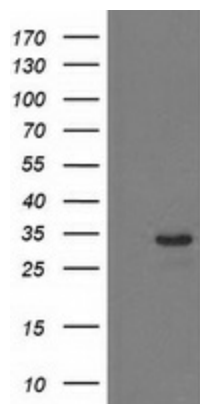
### HDHD2 Mouse Monoclonal Antibody (Biotin conjugated) [Clone ID: OTI4G3]

#### Product data:

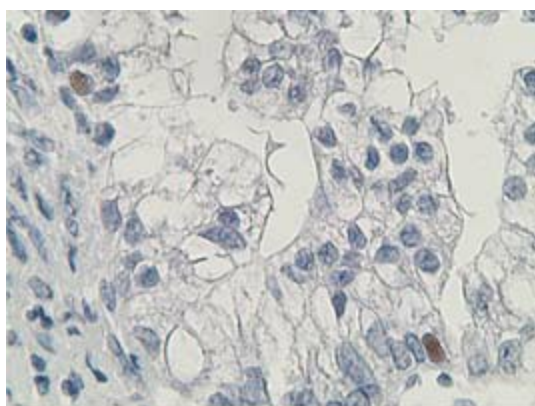
Product Type:	Primary Antibodies
Clone Name:	OTI4G3
Applications:	FC, IHC, WB
Recommended Dilution:	WB 1:500~2000, IHC 1:150, FLOW 1:100
Reactivity:	Human, Mouse, Rat
Host:	Mouse
Isotype:	IgG1
Clonality:	Monoclonal
Immunogen:	Full length human recombinant protein of human HDHD2(NP_115500) produced in HEK293T cell.
Formulation:	PBS (pH 7.3) containing 1% BSA, 50% glycerol and 0.02% sodium azide.
Concentration:	0.5 mg/ml
Purification:	Purified from mouse ascites fluids or tissue culture supernatant by affinity chromatography (protein A/G)
Conjugation:	Biotin
Storage:	Store at -20°C as received.
Stability:	Stable for 12 months from date of receipt.
Predicted Protein Size:	28.4 kDa
Gene Name:	haloacid dehalogenase like hydrolase domain containing 2
Database Link:	<a href="#">NP_115500</a> <a href="#">Entrez Gene 84064 Human</a> <a href="#">Q9HOR4</a>
Synonyms:	3110052N05Rik; HEL-S-301



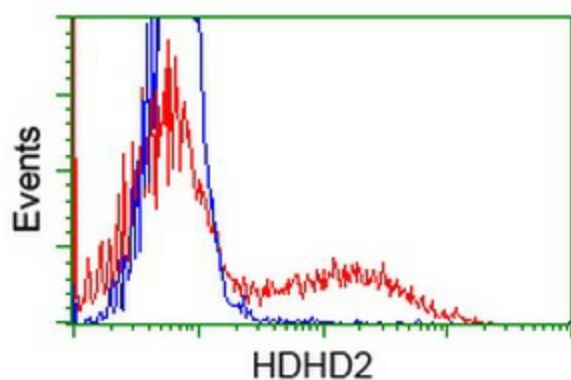
[View online »](#)

**Product images:**

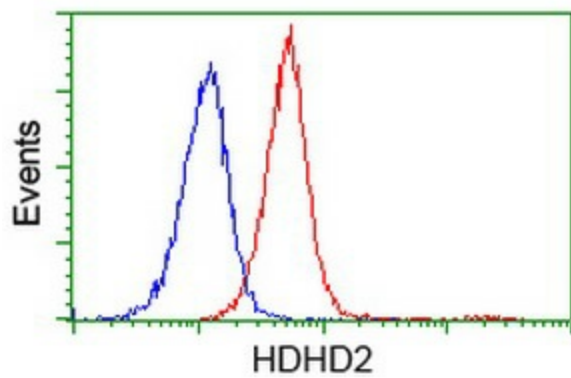
HEK293T cells were transfected with the pCMV6-ENTRY control (Left lane) or pCMV6-ENTRY HDHD2 ([RC205967], Right lane) cDNA for 48 hrs and lysed. Equivalent amounts of cell lysates (5 ug per lane) were separated by SDS-PAGE and immunoblotted with anti-HDHD2. Positive lysates [LY403144] (100ug) and [LC403144] (20ug) can be purchased separately from OriGene.



Immunohistochemical staining of paraffin-embedded Adenocarcinoma of Human ovary tissue using anti-HDHD2 mouse monoclonal antibody. (Heat-induced epitope retrieval by 10mM citric buffer, pH6.0, 100°C for 10min, [TA502834])



HEK293T cells transfected with either [RC205967] overexpress plasmid (Red) or empty vector control plasmid (Blue) were immunostained by anti-HDHD2 antibody ([TA502834]), and then analyzed by flow cytometry.



Flow cytometric Analysis of Jurkat cells, using anti-HDHD2 antibody ([TA502834]), (Red), compared to a nonspecific negative control antibody, (Blue).