

Product datasheet for **TA502816S**

FGF21 Mouse Monoclonal Antibody [Clone ID: OT11H5]

Product data:

Product Type:	Primary Antibodies
Clone Name:	OT11H5
Applications:	FC, WB
Recommended Dilution:	WB 1:2000, FLOW 1:100
Reactivity:	Human
Host:	Mouse
Isotype:	IgG1
Clonality:	Monoclonal
Immunogen:	Human recombinant protein fragment corresponding to amino acids 29-209 of human FGF21 (NP_061986) produced in E.coli.
Formulation:	PBS (pH 7.3) containing 1% BSA, 50% glycerol and 0.02% sodium azide.
Concentration:	1 mg/ml
Purification:	Purified from mouse ascites fluids or tissue culture supernatant by affinity chromatography (protein A/G)
Conjugation:	Unconjugated
Storage:	Store at -20°C as received.
Stability:	Stable for 12 months from date of receipt.
Predicted Protein Size:	19.4 kDa
Gene Name:	fibroblast growth factor 21
Database Link:	NP_061986 Entrez Gene 26291 Human Q9NSA1
Background:	The protein encoded by this gene is a member of the fibroblast growth factor (FGF) family. FGF family members possess broad mitogenic and cell survival activities and are involved in a variety of biological processes including embryonic development, cell growth, morphogenesis, tissue repair, tumor growth and invasion. The function of this growth factor has not yet been determined. [provided by RefSeq]

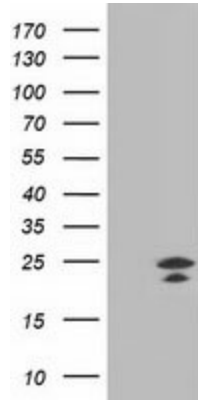


[View online »](#)

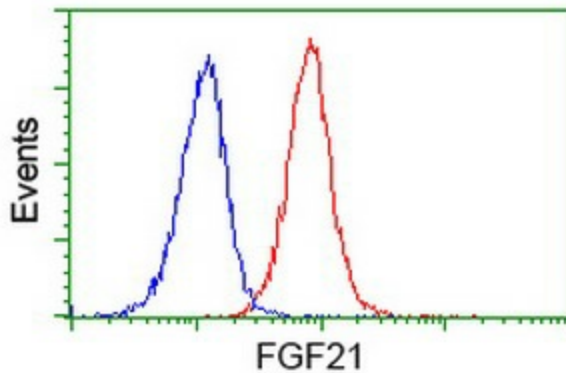
Synonyms: fibroblast growth factor 21

Protein Families: Adult stem cells, Embryonic stem cells, ES Cell Differentiation/IPS, Secreted Protein

Protein Pathways: MAPK signaling pathway, Melanoma, Pathways in cancer, Regulation of actin cytoskeleton

Product images:

HEK293T cells were transfected with the pCMV6-ENTRY control (Left lane) or pCMV6-ENTRY FGF21 ([RC204538], Right lane) cDNA for 48 hrs and lysed. Equivalent amounts of cell lysates (5 ug per lane) were separated by SDS-PAGE and immunoblotted with anti-FGF21. Positive lysates [LY412740] (100ug) and [LC412740] (20ug) can be purchased separately from OriGene.



Flow cytometric Analysis of Jurkat cells, using anti-FGF21 antibody ([TA502816]), (Red), compared to a nonspecific negative control antibody, (Blue).