

## Product datasheet for **TA502816AM**

### FGF21 Mouse Monoclonal Antibody (Biotin conjugated) [Clone ID: OTI1H5]

#### Product data:

|                         |  |
|-------------------------|--|
| Product Type:           | Primary Antibodies   |
| Clone Name:             | OTI1H5   |
| Applications:           | FC, WB   |
| Recommended Dilution:   | WB 1:2000, FLOW 1:100  |
| Reactivity:             | Human  |
| Host:                   | Mouse  |
| Isotype:                | IgG1   |
| Clonality:              | Monoclonal   |
| Immunogen:              | Human recombinant protein fragment corresponding to amino acids 29-209 of human FGF21 (NP_061986) produced in E.coli.  |
| Formulation:            | PBS (pH 7.3) containing 1% BSA, 50% glycerol and 0.02% sodium azide.   |
| Concentration:          | 0.5 mg/ml  |
| Purification:           | Purified from mouse ascites fluids or tissue culture supernatant by affinity chromatography (protein A/G)  |
| Conjugation:            | Biotin   |
| Storage:                | Store at -20°C as received.  |
| Stability:              | Stable for 12 months from date of receipt.   |
| Predicted Protein Size: | 19.4 kDa   |
| Gene Name:              | fibroblast growth factor 21  |
| Database Link:          | <a href="#">NP_061986</a><br><a href="#">Entrez Gene 26291 Human</a><br><a href="#">Q9NSA1</a>   |
| Background:             | The protein encoded by this gene is a member of the fibroblast growth factor (FGF) family. FGF family members possess broad mitogenic and cell survival activities and are involved in a variety of biological processes including embryonic development, cell growth, morphogenesis, tissue repair, tumor growth and invasion. The function of this growth factor has not yet been determined. [provided by RefSeq] |

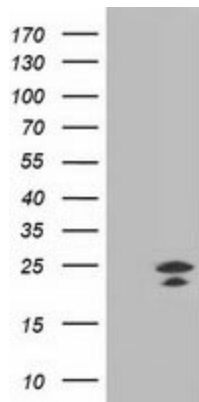


[View online »](#)

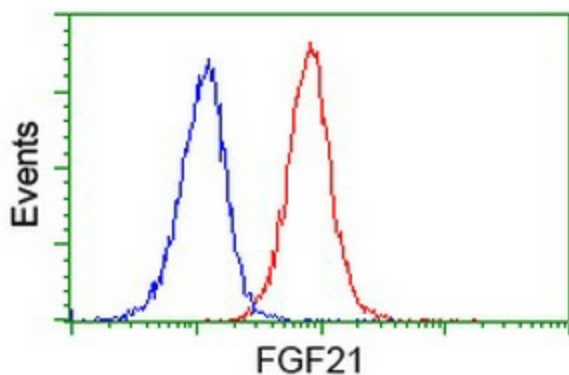
**Synonyms:** fibroblast growth factor 21

**Protein Families:** Adult stem cells, Embryonic stem cells, ES Cell Differentiation/IPS, Secreted Protein

**Protein Pathways:** MAPK signaling pathway, Melanoma, Pathways in cancer, Regulation of actin cytoskeleton

**Product images:**

HEK293T cells were transfected with the pCMV6-ENTRY control (Left lane) or pCMV6-ENTRY FGF21 ([RC204538], Right lane) cDNA for 48 hrs and lysed. Equivalent amounts of cell lysates (5 ug per lane) were separated by SDS-PAGE and immunoblotted with anti-FGF21. Positive lysates [LY412740] (100ug) and [LC412740] (20ug) can be purchased separately from OriGene.



Flow cytometric Analysis of Jurkat cells, using anti-FGF21 antibody ([TA502816]), (Red), compared to a nonspecific negative control antibody, (Blue).