

Product datasheet for **TA502790M**

LMCD1 Mouse Monoclonal Antibody [Clone ID: OTI2G5]

Product data:

Product Type:	Primary Antibodies
Clone Name:	OTI2G5
Applications:	FC, IF, WB
Recommended Dilution:	WB 1:2000, IF 1:100, FLOW 1:100
Reactivity:	Human, Mouse, Rat
Host:	Mouse
Isotype:	IgG2b
Clonality:	Monoclonal
Immunogen:	Full length human recombinant protein of human LMCD1 (NP_055398) produced in HEK293T cell.
Formulation:	PBS (pH 7.3) containing 1% BSA, 50% glycerol and 0.02% sodium azide.
Concentration:	0.96 mg/ml
Purification:	Purified from mouse ascites fluids or tissue culture supernatant by affinity chromatography (protein A/G)
Conjugation:	Unconjugated
Storage:	Store at -20°C as received.
Stability:	Stable for 12 months from date of receipt.
Predicted Protein Size:	40.7 kDa
Gene Name:	LIM and cysteine rich domains 1
Database Link:	NP_055398 Entrez Gene 29995 Human Q9NZU5



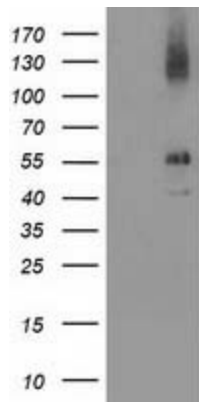
[View online »](#)

Background:

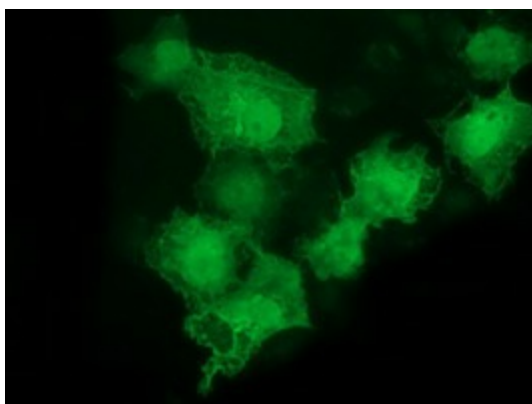
The protein encoded by this gene contains a cysteine-rich domain in the N-terminal region and 2 LIM domains in the C-terminal region. It also has several potential phosphorylation and N-myristoylation sites and a single potential N-glycosylation site. The presence of LIM domains implies involvement in protein-protein interactions. Expression of this gene has been detected in most tissues, with highest expression in skeletal muscle. Transcript variants utilizing alternative polyA signals have been observed. [provided by RefSeq]. COMPLETENESS: complete on the 3' end.

Synonyms:

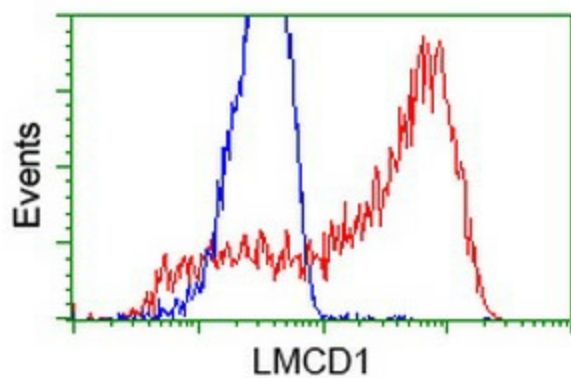
dyxin; LIM and cysteine-rich domains 1

Product images:


HEK293T cells were transfected with the pCMV6-ENTRY control (Left lane) or pCMV6-ENTRY LMCD1 ([RC200062], Right lane) cDNA for 48 hrs and lysed. Equivalent amounts of cell lysates (5 ug per lane) were separated by SDS-PAGE and immunoblotted with anti-LMCD1. Positive lysates [LY402349] (100ug) and [LC402349] (20ug) can be purchased separately from OriGene.



Anti-LMCD1 mouse monoclonal antibody ([TA502790]) immunofluorescent staining of COS7 cells transiently transfected by pCMV6-ENTRY LMCD1 ([RC200062]).



HEK293T cells transfected with either [RC200062] overexpress plasmid (Red) or empty vector control plasmid (Blue) were immunostained by anti-LMCD1 antibody ([TA502790]), and then analyzed by flow cytometry.