

## Product datasheet for **TA502788S**

### FGF21 Mouse Monoclonal Antibody [Clone ID: OTI9E5]

#### Product data:

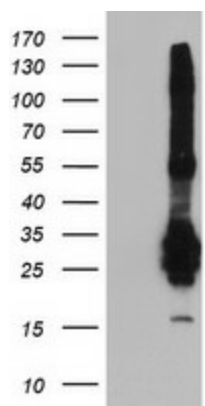
Product Type:	Primary Antibodies
Clone Name:	OTI9E5
Applications:	FC, IF, IHC, WB
Recommended Dilution:	WB: 1:2000, IHC: 1:150, FLOW: 1:100, IF: 1:50-1:100
Reactivity:	Human
Host:	Mouse
Isotype:	IgG1
Clonality:	Monoclonal
Immunogen:	Human recombinant protein fragment corresponding to amino acids 29-209 of human FGF21(NP_061986) produced in HEK293T cell.
Formulation:	PBS (pH 7.3) containing 1% BSA, 50% glycerol and 0.02% sodium azide.
Concentration:	1 mg/ml
Purification:	Purified from mouse ascites fluids or tissue culture supernatant by affinity chromatography (protein A/G)
Conjugation:	Unconjugated
Storage:	Store at -20°C as received.
Stability:	Stable for 12 months from date of receipt.
Gene Name:	fibroblast growth factor 21
Database Link:	<a href="#">NP_061986</a> <a href="#">Entrez Gene 26291 Human</a> <a href="#">Q9NSA1</a>
Background:	The protein encoded by this gene is a member of the fibroblast growth factor (FGF) family. FGF family members possess broad mitogenic and cell survival activities and are involved in a variety of biological processes including embryonic development, cell growth, morphogenesis, tissue repair, tumor growth and invasion. The function of this growth factor has not yet been determined. [provided by RefSeq]
Synonyms:	fibroblast growth factor 21



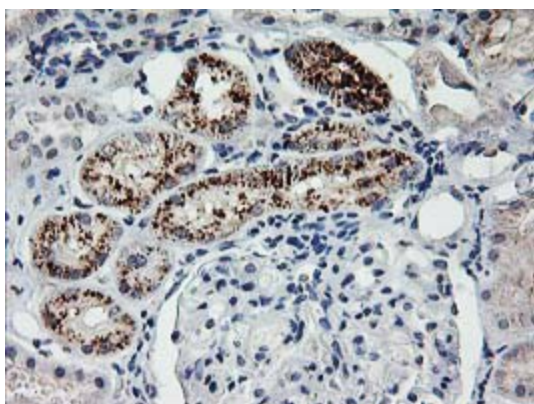
[View online »](#)

**Protein Families:** Adult stem cells, Embryonic stem cells, ES Cell Differentiation/IPS, Secreted Protein  
**Protein Pathways:** MAPK signaling pathway, Melanoma, Pathways in cancer, Regulation of actin cytoskeleton

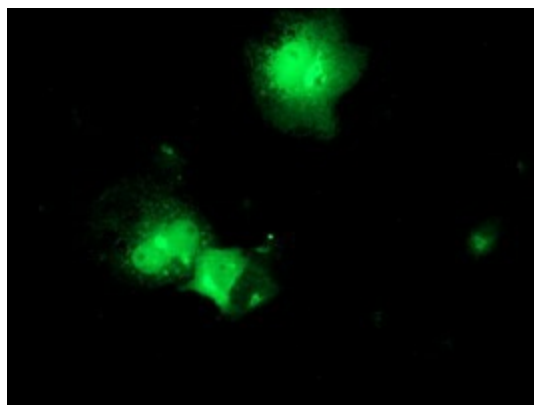
**Product images:**



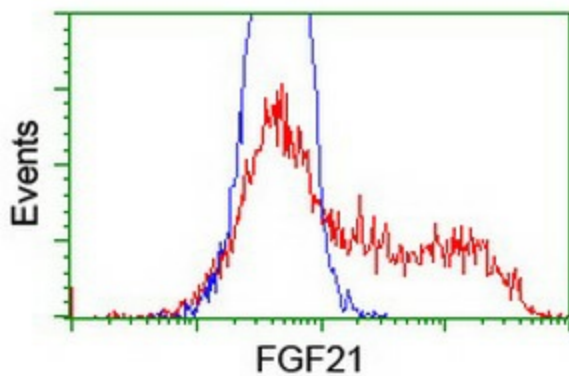
HEK293T cells were transfected with the pCMV6-ENTRY control (Left lane) or pCMV6-ENTRY FGF21 ([RC204538], Right lane) cDNA for 48 hrs and lysed. Equivalent amounts of cell lysates (5 ug per lane) were separated by SDS-PAGE and immunoblotted with anti-FGF21. Positive lysates [LY412740] (100ug) and [LC412740] (20ug) can be purchased separately from OriGene.



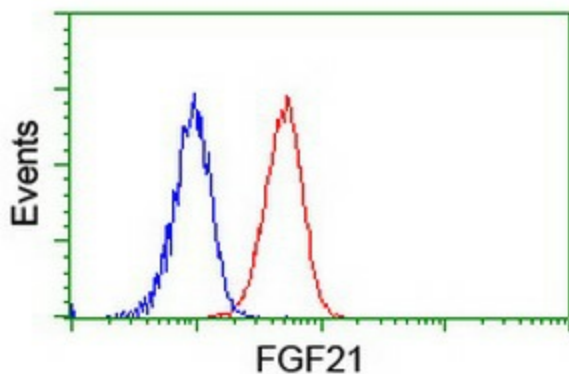
Immunohistochemical staining of paraffin-embedded Human Kidney tissue within the normal limits using anti-FGF21 mouse monoclonal antibody. (Heat-induced epitope retrieval by 10mM citric buffer, pH6.0, 100°C for 10min, [TA502788])



Anti-FGF21 mouse monoclonal antibody ([TA502788]) immunofluorescent staining of COS7 cells transiently transfected by pCMV6-ENTRY FGF21 ([RC204538]) at 1:100



HEK293T cells transfected with either [RC204538] overexpress plasmid (Red) or empty vector control plasmid (Blue) were immunostained by anti-FGF21 antibody ([TA502788]), and then analyzed by flow cytometry.



Flow cytometric Analysis of Jurkat cells, using anti-FGF21 antibody ([TA502788]), (Red), compared to a nonspecific negative control antibody, (Blue).