

## Product datasheet for **TA502780M**

### **p53 (TP53) Mouse Monoclonal Antibody [Clone ID: OTI3D5]**

#### **Product data:**

Product Type:	Primary Antibodies
Clone Name:	OTI3D5
Applications:	FC, IF, IHC, WB
Recommended Dilution:	WB 1:500~2000, IHC 1:150, IF 1:100, FLOW 1:100
Reactivity:	Human
Host:	Mouse
Isotype:	IgG1
Clonality:	Monoclonal
Immunogen:	Full length human recombinant protein of human TP53 (NP_000537) produced in HEK293T cell.
Formulation:	PBS (pH 7.3) containing 1% BSA, 50% glycerol and 0.02% sodium azide.
Concentration:	1 mg/ml
Purification:	Purified from mouse ascites fluids or tissue culture supernatant by affinity chromatography (protein A/G)
Conjugation:	Unconjugated
Storage:	Store at -20°C as received.
Stability:	Stable for 12 months from date of receipt.
Predicted Protein Size:	43.5 kDa
Gene Name:	tumor protein p53
Database Link:	<a href="#">NP_000537</a> <a href="#">Entrez Gene 7157 Human</a> <a href="#">P04637</a>

[View online »](#)

**Background:**

The protein encoded by this gene is a member of the STAT family of transcription factors. In response to cytokines and growth factors, STAT family members are phosphorylated by the receptor associated kinases, and then form homo- or heterodimers that translocate to the cell nucleus where they act as transcription activators. This protein is activated by, and mediates the responses of many cell ligands, such as IL2, IL3, IL7 GM-CSF, erythropoietin, thrombopoietin, and different growth hormones. Activation of this protein in myeloma and lymphoma associated with a TEL/JAK2 gene fusion is independent of cell stimulus and has been shown to be essential for the tumorigenesis. The mouse counterpart of this gene is found to induce the expression of BCL2L1/BCL-X(L), which suggests the antiapoptotic function of this gene in cells. [provided by RefSeq]

**Synonyms:**

BCC7; LFS1; P53; TRP53

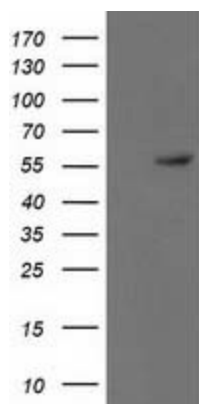
**Protein Families:**

Druggable Genome, Stem cell - Pluripotency, Transcription Factors

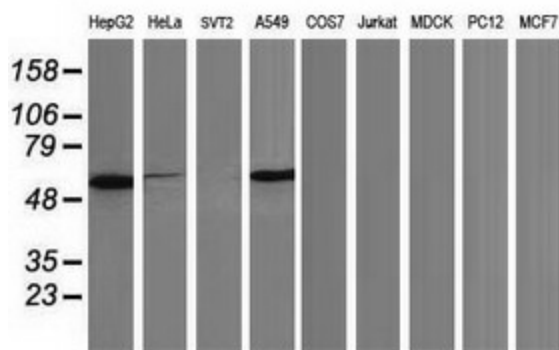
**Protein Pathways:**

Amyotrophic lateral sclerosis (ALS), Apoptosis, Basal cell carcinoma, Bladder cancer, Cell cycle, Chronic myeloid leukemia, Colorectal cancer, Endometrial cancer, Glioma, Huntington's disease, MAPK signaling pathway, Melanoma, Neurotrophin signaling pathway, Non-small cell lung cancer, p53 signaling pathway, Pancreatic cancer, Pathways in cancer, Prostate cancer, Small cell lung cancer, Thyroid cancer, Wnt signaling pathway

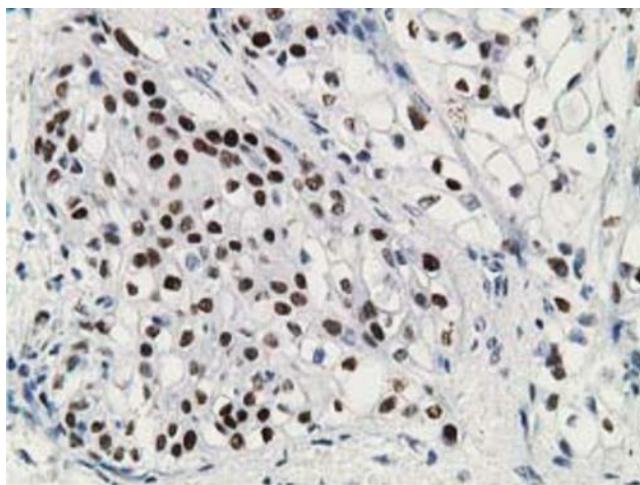
**Product images:**



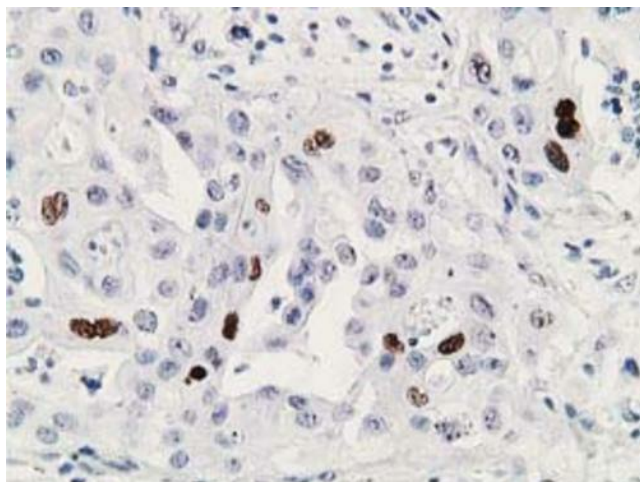
HEK293T cells were transfected with the pCMV6-ENTRY control (Left lane) or pCMV6-ENTRY TP53 ([RC200003], Right lane) cDNA for 48 hrs and lysed. Equivalent amounts of cell lysates (5 ug per lane) were separated by SDS-PAGE and immunoblotted with anti-TP53. Positive lysates [LY400186] (100ug) and [LC400186] (20ug) can be purchased separately from OriGene.



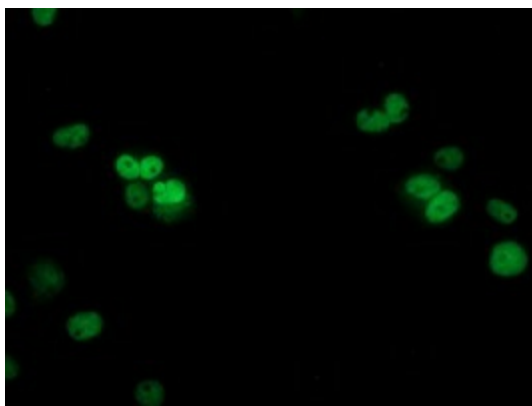
Western blot analysis of extracts (35ug) from 9 different cell lines by using anti-TP53 monoclonal antibody.



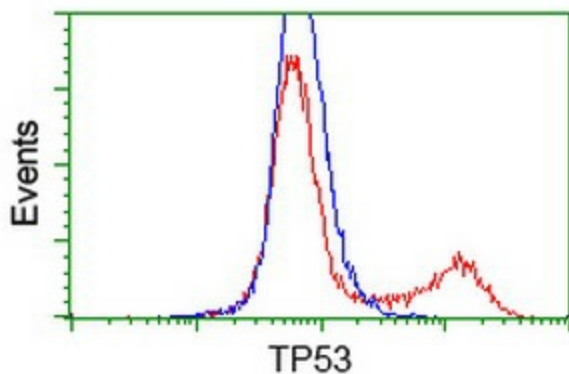
Immunohistochemical staining of paraffin-embedded Carcinoma of Human pancreas tissue using anti-TP53 mouse monoclonal antibody. Heat-induced epitope retrieval by EDTA solution buffer pH 8.0 at 120°C for 3 min.



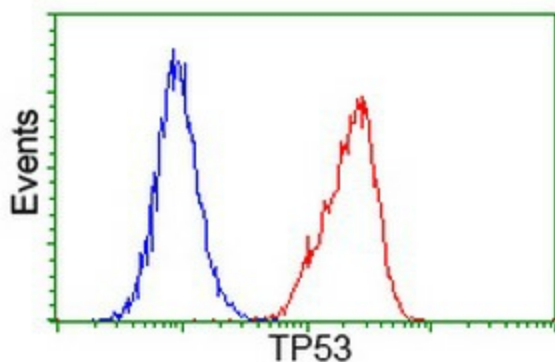
Immunohistochemical staining of paraffin-embedded Carcinoma of Human bladder tissue using anti-TP53 mouse monoclonal antibody. Heat-induced epitope retrieval by EDTA solution buffer pH 8.0 at 120°C for 3 min.



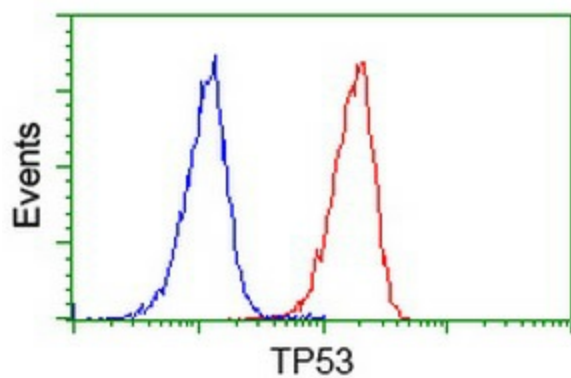
Anti-TP53 mouse monoclonal antibody ([TA502780]) immunofluorescent staining of COS7 cells transiently transfected by pCMV6-ENTRY TP53 ([RC200003]).



HEK293T cells transfected with either [RC200003] overexpress plasmid (Red) or empty vector control plasmid (Blue) were immunostained by anti-TP53 antibody ([TA502780]), and then analyzed by flow cytometry.



Flow cytometric Analysis of HeLa cells, using anti-TP53 antibody ([TA502780]), (Red), compared to a nonspecific negative control antibody, (Blue).



Flow cytometric Analysis of Jurkat cells, using anti-TP53 antibody ([TA502780]), (Red), compared to a nonspecific negative control antibody, (Blue).