

Product datasheet for **TA502762S**

LNK (SH2B3) Mouse Monoclonal Antibody [Clone ID: OT11E6]

Product data:

Product Type:	Primary Antibodies
Clone Name:	OT11E6
Applications:	FC, IF, WB
Recommended Dilution:	WB 1:2000, IF 1:100, FLOW 1:100
Reactivity:	Human
Host:	Mouse
Isotype:	IgG1
Clonality:	Monoclonal
Immunogen:	Full length human recombinant protein of human SH2B3 (NP_005466) produced in HEK293T cell.
Formulation:	PBS (pH 7.3) containing 1% BSA, 50% glycerol and 0.02% sodium azide.
Concentration:	0.6 mg/ml
Purification:	Purified from mouse ascites fluids or tissue culture supernatant by affinity chromatography (protein A/G)
Conjugation:	Unconjugated
Storage:	Store at -20°C as received.
Stability:	Stable for 12 months from date of receipt.
Predicted Protein Size:	63 kDa
Gene Name:	SH2B adaptor protein 3
Database Link:	NP_005466 Entrez Gene 10019 Human Q9UQQ2
Background:	This gene encodes a member of the SH2B adaptor family of proteins, which are involved in a range of signaling activities by growth factor and cytokine receptors. The encoded protein is a key negative regulator of cytokine signaling and plays a critical role in hematopoiesis. Mutations in this gene have been associated with susceptibility to celiac disease type 13 and susceptibility to insulin-dependent diabetes mellitus.

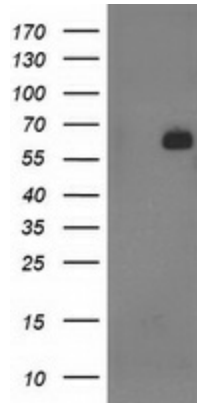


[View online »](#)

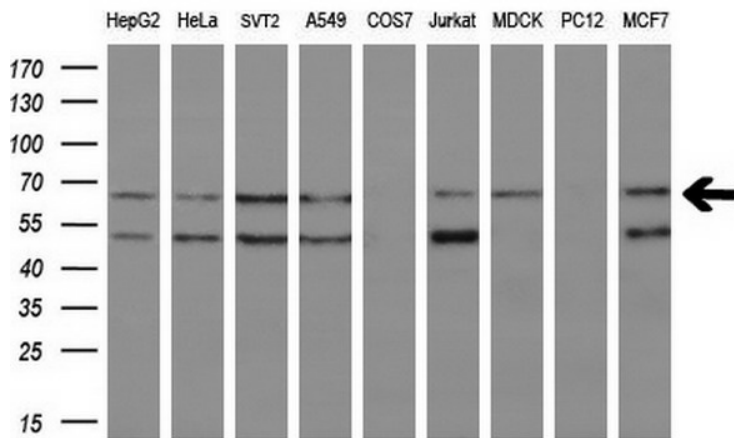
Synonyms: IDDM20; LNK

Protein Pathways: Neurotrophin signaling pathway

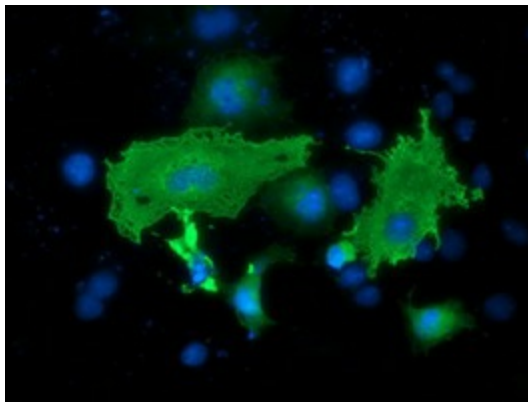
Product images:



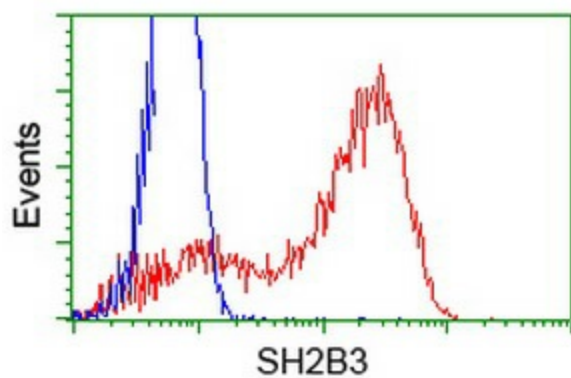
HEK293T cells were transfected with the pCMV6-ENTRY control (Left lane) or pCMV6-ENTRY SH2B3 ([RC218359], Right lane) cDNA for 48 hrs and lysed. Equivalent amounts of cell lysates (5 ug per lane) were separated by SDS-PAGE and immunoblotted with anti-SH2B3. Positive lysates [LY401678] (100ug) and [LC401678] (20ug) can be purchased separately from OriGene.



Western blot analysis of extracts (35ug) from 9 different cell lines by using anti-SH2B3 monoclonal antibody (HepG2: human; HeLa: human; SVT2: mouse; A549: human; COS7: monkey; Jurkat: human; MDCK: canine; PC12: rat; MCF7: human) (1:200).



Anti-SH2B3 mouse monoclonal antibody ([TA502762]) immunofluorescent staining of COS7 cells transiently transfected by pCMV6-ENTRY SH2B3 ([RC218359]).



HEK293T cells transfected with either [RC218359] overexpress plasmid (Red) or empty vector control plasmid (Blue) were immunostained by anti-SH2B3 antibody ([TA502762]), and then analyzed by flow cytometry.