

## Product datasheet for **TA502755AM**

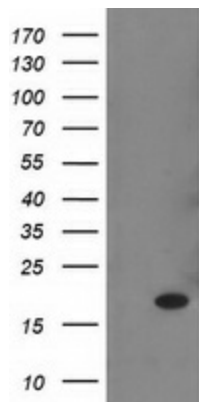
### **RBP1 Mouse Monoclonal Antibody (Biotin conjugated) [Clone ID: OTI2H3]**

#### **Product data:**

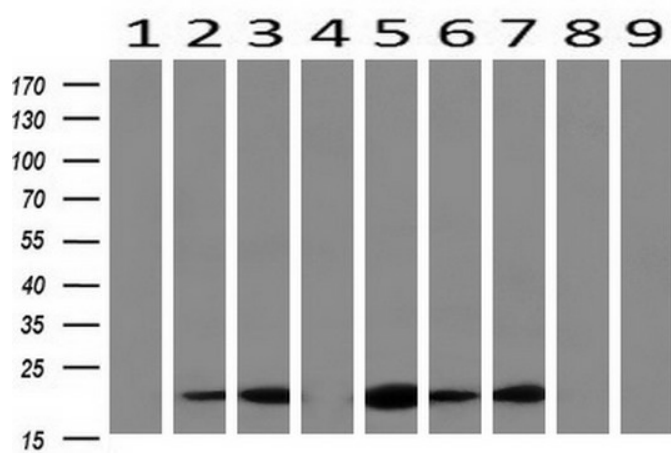
<b>Product Type:</b>	Primary Antibodies
<b>Clone Name:</b>	OTI2H3
<b>Applications:</b>	FC, IF, IHC, WB
<b>Recommended Dilution:</b>	WB 1:2000, IHC 1:150, IF 1:100, FLOW 1:100
<b>Reactivity:</b>	Human, Mouse, Rat
<b>Host:</b>	Mouse
<b>Isotype:</b>	IgG2a
<b>Clonality:</b>	Monoclonal
<b>Immunogen:</b>	Full length human recombinant protein of human RBP1 (NP_002890) produced in HEK293T cell.
<b>Formulation:</b>	PBS (pH 7.3) containing 1% BSA, 50% glycerol and 0.02% sodium azide.
<b>Concentration:</b>	0.5 mg/ml
<b>Purification:</b>	Purified from mouse ascites fluids or tissue culture supernatant by affinity chromatography (protein A/G)
<b>Conjugation:</b>	Biotin
<b>Storage:</b>	Store at -20°C as received.
<b>Stability:</b>	Stable for 12 months from date of receipt.
<b>Predicted Protein Size:</b>	15.7 kDa
<b>Gene Name:</b>	retinol binding protein 1
<b>Database Link:</b>	<a href="#">NP_002890</a> <a href="#">Entrez Gene 19659 Mouse</a> <a href="#">Entrez Gene 25056 Rat</a> <a href="#">Entrez Gene 5947 Human</a> <a href="#">P09455</a>
<b>Background:</b>	This gene encodes the carrier protein involved in the transport of retinol (vitamin A alcohol) from the liver storage site to peripheral tissue. Vitamin A is a fat-soluble vitamin necessary for growth, reproduction, differentiation of epithelial tissues, and vision. Multiple transcript variants encoding different isoforms have been found for this gene. [provided by RefSeq]
<b>Synonyms:</b>	CRABP-I; CRBP; CRBP1; CRBPI; RBPC



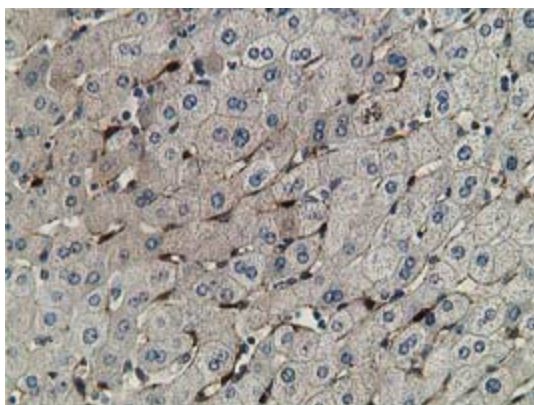
[View online »](#)

**Product images:**


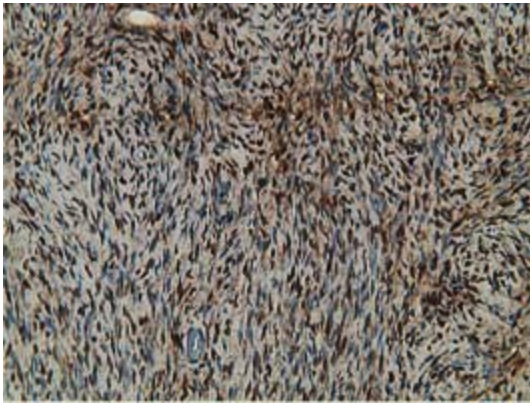
HEK293T cells were transfected with the pCMV6-ENTRY control (Cat# [PS100001], Left lane) or pCMV6-ENTRY RBP1 (Cat# [RC229119], Right lane) cDNA for 48 hrs and lysed. Equivalent amounts of cell lysates (5 ug per lane) were separated by SDS-PAGE and immunoblotted with anti-RBP1 (Cat# [TA502755]). Positive lysates [LY401017] (100ug) and [LC401017] (20ug) can be purchased separately from OriGene.



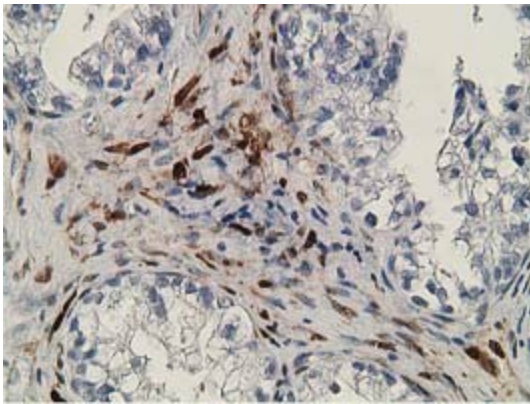
Western blot analysis of extracts (10ug) from 9 Human tissue by using anti-RBP1 monoclonal antibody at 1:200 (1: Testis; 2: Omentum; 3: Uterus; 4: Breast; 5: Brain; 6: Liver; 7: Ovary; 8: Thyroid gland; 9: colon).



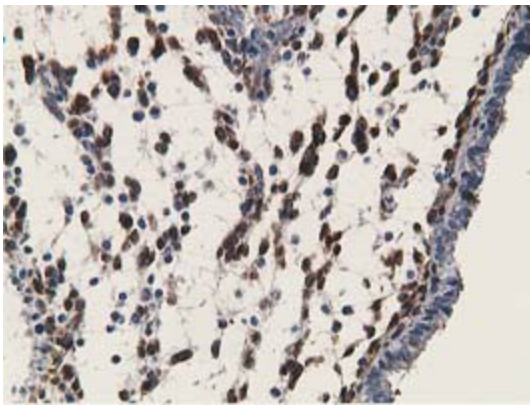
Immunohistochemical staining of paraffin-embedded Human liver tissue within the normal limits using anti-RBP1 mouse monoclonal antibody. (Heat-induced epitope retrieval by 10mM citric buffer, pH6.0, 100°C for 10min, [TA502755])



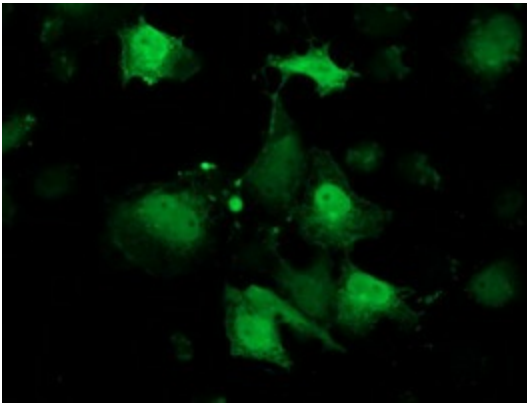
Immunohistochemical staining of paraffin-embedded Human Ovary tissue within the normal limits using anti-RBP1 mouse monoclonal antibody. (Heat-induced epitope retrieval by 10mM citric buffer, pH6.0, 100°C for 10min, [TA502755])



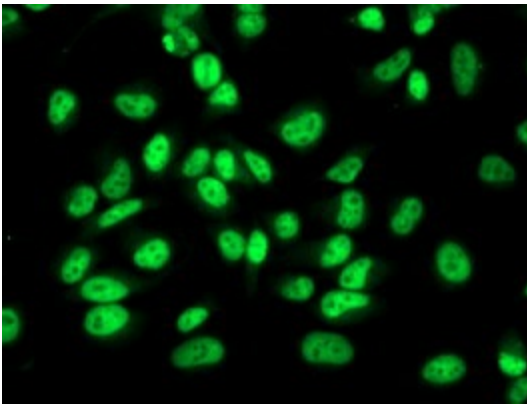
Immunohistochemical staining of paraffin-embedded Adenocarcinoma of Human ovary tissue using anti-RBP1 mouse monoclonal antibody. (Heat-induced epitope retrieval by 10mM citric buffer, pH6.0, 100°C for 10min, [TA502755])



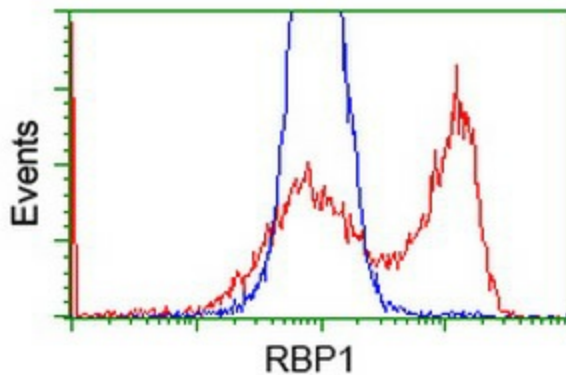
Immunohistochemical staining of paraffin-embedded Human endometrium tissue within the normal limits using anti-RBP1 mouse monoclonal antibody. (Heat-induced epitope retrieval by 10mM citric buffer, pH6.0, 100°C for 10min, [TA502755])



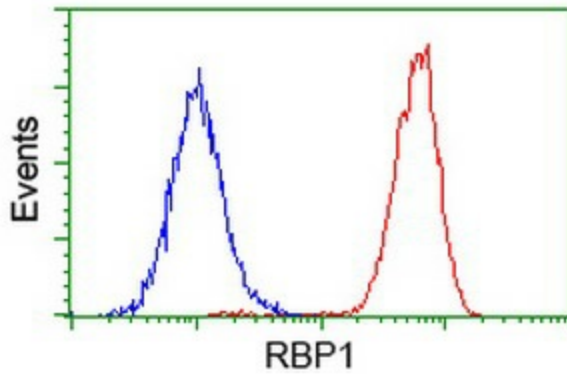
Anti-RBP1 mouse monoclonal antibody ([TA502755]) immunofluorescent staining of COS7 cells transiently transfected by pCMV6-ENTRY RBP1 ([RC214515]).



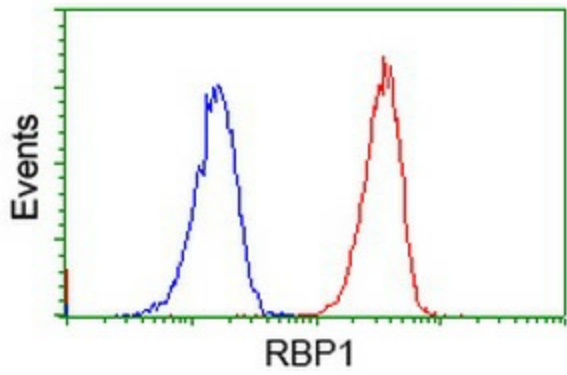
Immunofluorescent staining of HeLa cells using anti-RBP1 mouse monoclonal antibody ([TA502755]).



HEK293T cells transfected with either [RC214515] overexpress plasmid (Red) or empty vector control plasmid (Blue) were immunostained by anti-RBP1 antibody ([TA502755]), and then analyzed by flow cytometry.



Flow cytometric Analysis of HeLa cells, using anti-RBP1 antibody ([TA502755]), (Red), compared to a nonspecific negative control antibody, (Blue).



Flow cytometric Analysis of Jurkat cells, using anti-RBP1 antibody ([TA502755]), (Red), compared to a nonspecific negative control antibody, (Blue).