

## Product datasheet for **TA502752S**

### ECRG4 Mouse Monoclonal Antibody [Clone ID: OTI1F6]

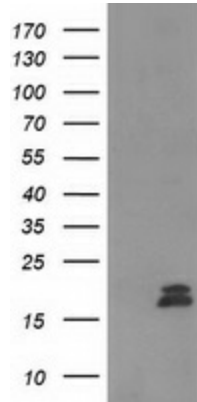
#### Product data:

Product Type:	Primary Antibodies
Clone Name:	OTI1F6
Applications:	FC, WB
Recommended Dilution:	WB 1:500, FLOW 1:100
Reactivity:	Human
Host:	Mouse
Isotype:	IgG2a
Clonality:	Monoclonal
Immunogen:	Full length human recombinant protein of human C2orf40 (NP_115787) produced in HEK293T cell.
Formulation:	PBS (pH 7.3) containing 1% BSA, 50% glycerol and 0.02% sodium azide.
Concentration:	1.1 mg/ml
Purification:	Purified from mouse ascites fluids or tissue culture supernatant by affinity chromatography (protein A/G)
Conjugation:	Unconjugated
Storage:	Store at -20°C as received.
Stability:	Stable for 12 months from date of receipt.
Predicted Protein Size:	17 kDa
Gene Name:	ECRG4 augurin precursor
Database Link:	<a href="#">NP_115787</a> <a href="#">Entrez Gene 84417 Human</a> <a href="#">Q9H1Z8</a>
Synonyms:	ECRG4
Protein Families:	Secreted Protein, Transmembrane

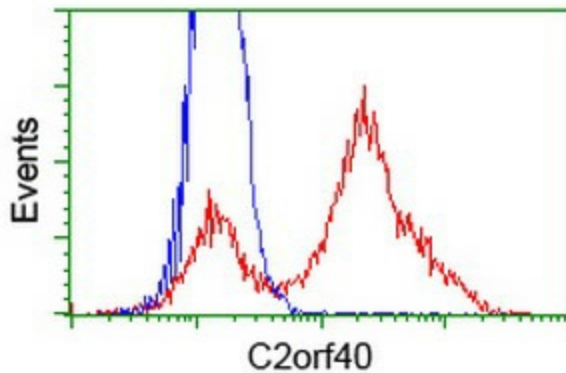


[View online »](#)

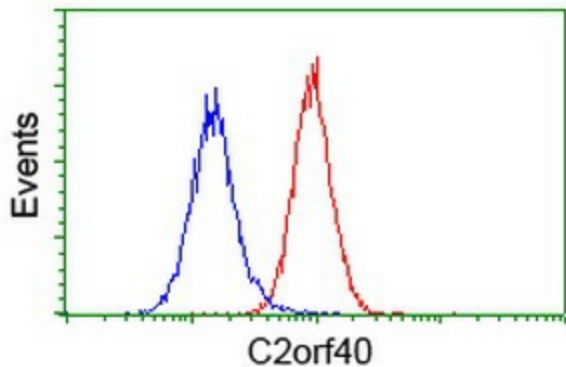
**Product images:**



HEK293T cells were transfected with the pCMV6-ENTRY control (Left lane) or pCMV6-ENTRY C2orf40 ([RC206239], Right lane) cDNA for 48 hrs and lysed. Equivalent amounts of cell lysates (5 ug per lane) were separated by SDS-PAGE and immunoblotted with anti-C2orf40. Positive lysates [LY403168] (100ug) and [LC403168] (20ug) can be purchased separately from OriGene.



HEK293T cells transfected with either [RC206239] overexpress plasmid (Red) or empty vector control plasmid (Blue) were immunostained by anti-C2orf40 antibody ([TA502752]), and then analyzed by flow cytometry.



Flow cytometric Analysis of HeLa cells, using anti-C2orf40 antibody ([TA502752]), (Red), compared to a nonspecific negative control antibody (TA50011), (Blue).