

## Product datasheet for **TA502751S**

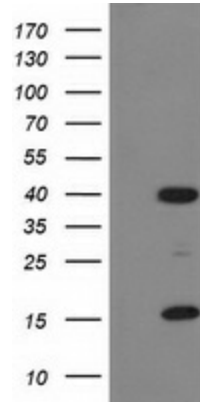
### **PDLIM2 Mouse Monoclonal Antibody [Clone ID: OTI9A11]**

#### **Product data:**

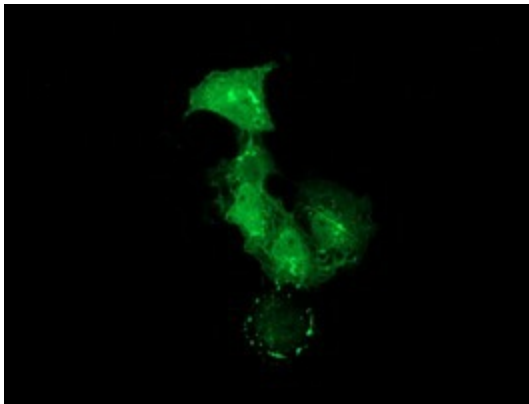
<b>Product Type:</b>	Primary Antibodies
<b>Clone Name:</b>	OTI9A11
<b>Applications:</b>	FC, IF, WB
<b>Recommended Dilution:</b>	WB 1:2000, IF 1:100, FLOW 1:100
<b>Reactivity:</b>	Human
<b>Host:</b>	Mouse
<b>Isotype:</b>	IgG1
<b>Clonality:</b>	Monoclonal
<b>Immunogen:</b>	Full length human recombinant protein of human PDLIM2 (NP_067643) produced in HEK293T cell.
<b>Formulation:</b>	PBS (pH 7.3) containing 1% BSA, 50% glycerol and 0.02% sodium azide.
<b>Concentration:</b>	0.49 mg/ml
<b>Purification:</b>	Purified from mouse ascites fluids or tissue culture supernatant by affinity chromatography (protein A/G)
<b>Conjugation:</b>	Unconjugated
<b>Storage:</b>	Store at -20°C as received.
<b>Stability:</b>	Stable for 12 months from date of receipt.
<b>Predicted Protein Size:</b>	37.3 kDa
<b>Gene Name:</b>	PDZ and LIM domain 2
<b>Database Link:</b>	<a href="#">NP_067643</a> <a href="#">Entrez Gene 64236 Human</a> <a href="#">Q96JY6</a>
<b>Synonyms:</b>	MYSTIQUE; SLIM



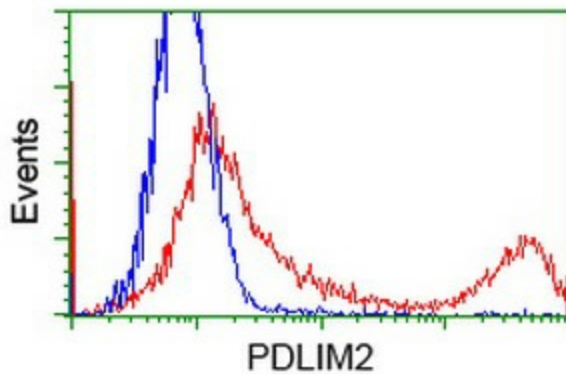
[View online »](#)

**Product images:**

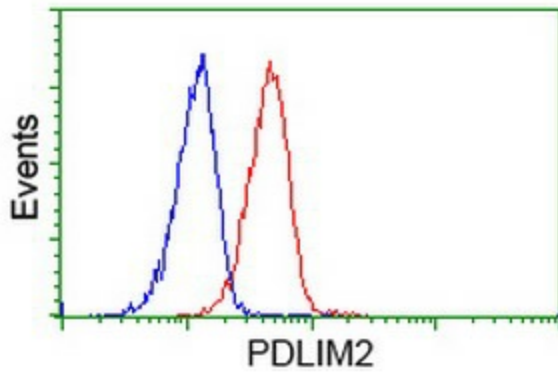
HEK293T cells were transfected with the pCMV6-ENTRY control (Left lane) or pCMV6-ENTRY PDLIM2 ([RC210022], Right lane) cDNA for 48 hrs and lysed. Equivalent amounts of cell lysates (5 ug per lane) were separated by SDS-PAGE and immunoblotted with anti-PDLIM2. Positive lysates [LY411957] (100ug) and [LC411957] (20ug) can be purchased separately from OriGene.



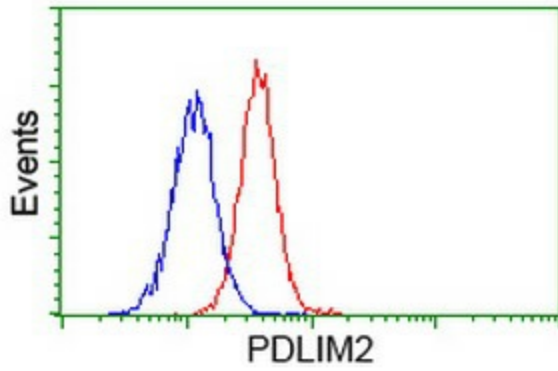
Anti-PDLIM2 mouse monoclonal antibody ([TA502751]) immunofluorescent staining of COS7 cells transiently transfected by pCMV6-ENTRY PDLIM2 ([RC210022]).



HEK293T cells transfected with either [RC210022] overexpress plasmid (Red) or empty vector control plasmid (Blue) were immunostained by anti-PDLIM2 antibody ([TA502751]), and then analyzed by flow cytometry.



Flow cytometric Analysis of HeLa cells, using anti-PDLIM2 antibody ([TA502751]), (Red), compared to a nonspecific negative control antibody (TA50011), (Blue).



Flow cytometric Analysis of Jurkat cells, using anti-PDLIM2 antibody ([TA502751]), (Red), compared to a nonspecific negative control antibody (TA50011), (Blue).