

## Product datasheet for **TA502734**

### ITM2B Mouse Monoclonal Antibody [Clone ID: OTI1C11]

#### Product data:

Product Type:	Primary Antibodies
Clone Name:	OTI1C11
Applications:	FC, IHC, WB
Recommended Dilution:	WB 1:2000, IHC 1:150, FLOW 1:100
Reactivity:	Human, Mouse, Rat
Host:	Mouse
Isotype:	IgG2a
Clonality:	Monoclonal
Immunogen:	Full length human recombinant protein of human ITM2B (NP_068839) produced in HEK293T cell.
Formulation:	PBS (PH 7.3) containing 1% BSA, 50% glycerol and 0.02% sodium azide.
Concentration:	1 mg/ml
Purification:	Purified from mouse ascites fluids or tissue culture supernatant by affinity chromatography (protein A/G)
Conjugation:	Unconjugated
Storage:	Store at -20°C as received.
Stability:	Stable for 12 months from date of receipt.
Predicted Protein Size:	30.2 kDa
Gene Name:	integral membrane protein 2B
Database Link:	<a href="#">NP_068839</a> <a href="#">Entrez Gene 16432 Mouse</a> <a href="#">Entrez Gene 290364 Rat</a> <a href="#">Entrez Gene 9445 Human</a> <a href="#">Q9Y287</a>



[View online »](#)

**Background:**

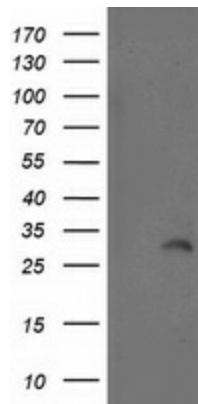
Amyloid precursor proteins are processed by beta-secretase and gamma-secretase to produce beta-amyloid peptides which form the characteristic plaques of Alzheimer disease. This gene encodes a transmembrane protein which is processed at the C-terminus by furin or furin-like proteases to produce a small secreted peptide which inhibits the deposition of beta-amyloid. Mutations which result in extension of the C-terminal end of the encoded protein, thereby increasing the size of the secreted peptide, are associated with two neurodegenerative diseases, familial British dementia and familial Danish dementia. [provided by RefSeq]

**Synonyms:**

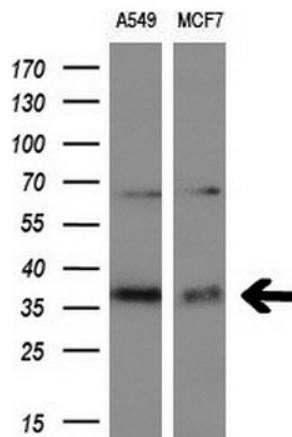
ABRI; BRI; BRI2; BRICD2B; E3-16; E25B; FBD; imBRI2; RDGCA

**Protein Families:**

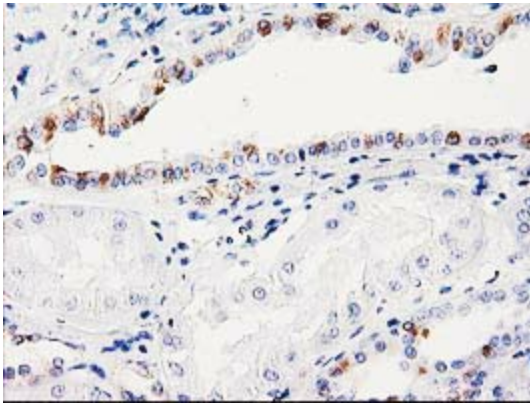
Druggable Genome, Transmembrane

**Product images:**


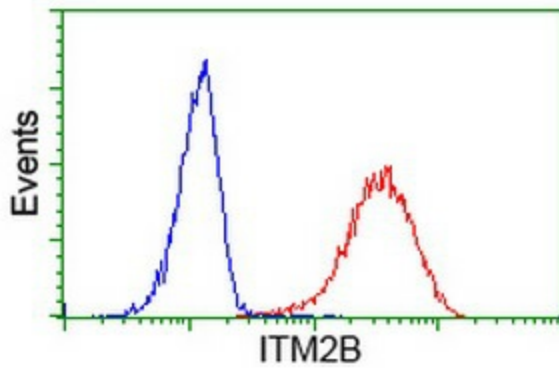
HEK293T cells were transfected with the pCMV6-ENTRY control (Cat# [PS100001], Left lane) or pCMV6-ENTRY ITM2B (Cat# [RC202377], Right lane) cDNA for 48 hrs and lysed. Equivalent amounts of cell lysates (5 ug per lane) were separated by SDS-PAGE and immunoblotted with anti-ITM2B (Cat# TA502734). Positive lysates [LY411840] (100ug) and [LC411840] (20ug) can be purchased separately from OriGene.



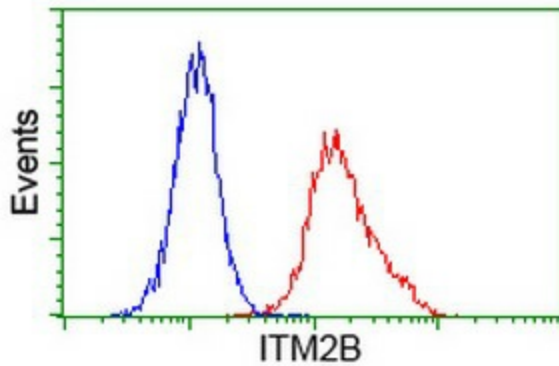
Western blot analysis of extracts (10ug) from 2 different cell lines by using anti-ITM2B monoclonal antibody (1:200).



Immunohistochemical staining of paraffin-embedded Human Kidney tissue within the normal limits using anti-ITM2B mouse monoclonal antibody. (Heat-induced epitope retrieval by 10mM citric buffer, pH6.0, 100°C for 10min, TA502734)



Flow cytometric Analysis of HeLa cells, using anti-ITM2B antibody (TA502734), (Red), compared to a nonspecific negative control antibody (TA50011), (Blue).



Flow cytometric Analysis of Jurkat cells, using anti-ITM2B antibody (TA502734), (Red), compared to a nonspecific negative control antibody (TA50011), (Blue).