

Product datasheet for **TA502716BM**

MAB21L3 Mouse Monoclonal Antibody (HRP conjugated) [Clone ID: OTI1F6]

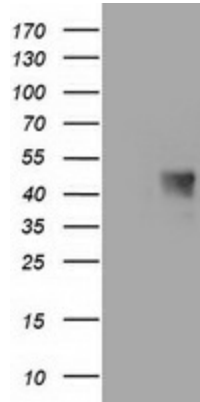
Product data:

Product Type:	Primary Antibodies
Clone Name:	OTI1F6
Applications:	WB
Recommended Dilution:	WB 1:2000, FLOW 1:100
Reactivity:	Human
Host:	Mouse
Isotype:	IgG2b
Clonality:	Monoclonal
Immunogen:	Full length human recombinant protein of human C1orf161 (NP_689580) produced in HEK293T cell.
Formulation:	PBS (pH 7.3) containing 1% BSA, 50% glycerol.
Concentration:	0.5 mg/ml
Purification:	Purified from mouse ascites fluids or tissue culture supernatant by affinity chromatography (protein A/G)
Conjugation:	HRP
Storage:	Store at -20°C as received.
Stability:	Stable for 12 months from date of receipt.
Predicted Protein Size:	42.2 kDa
Gene Name:	mab-21 like 3
Database Link:	NP_689580 Entrez Gene 126868 Human Q8N8X9
Synonyms:	C1orf161

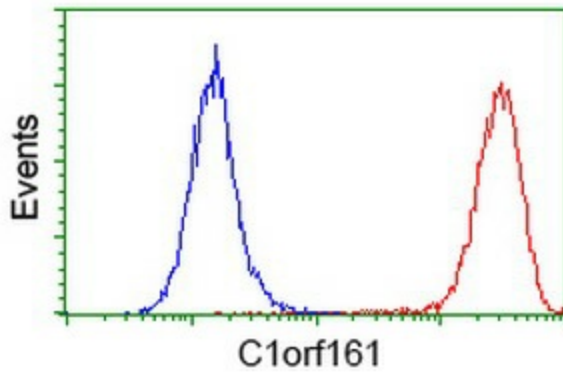


[View online »](#)

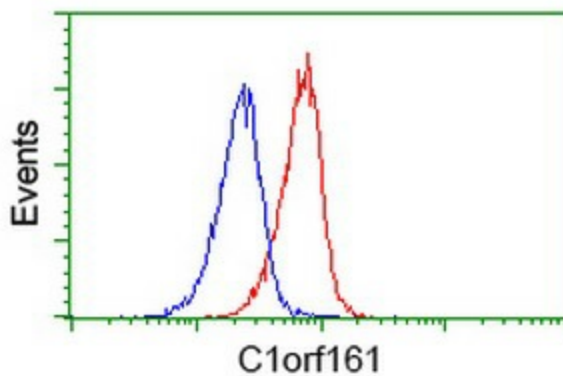
Product images:



HEK293T cells were transfected with the pCMV6-ENTRY control (Left lane) or pCMV6-ENTRY C1orf161 ([RC217974], Right lane) cDNA for 48 hrs and lysed. Equivalent amounts of cell lysates (5 ug per lane) were separated by SDS-PAGE and immunoblotted with anti-C1orf161. Positive lysates [LY407616] (100ug) and [LC407616] (20ug) can be purchased separately from OriGene.



Flow cytometric Analysis of HeLa cells, using anti-C1orf161 antibody ([TA502716]), (Red), compared to a nonspecific negative control antibody (TA50011), (Blue).



Flow cytometric Analysis of Jurkat cells, using anti-C1orf161 antibody ([TA502716]), (Red), compared to a nonspecific negative control antibody (TA50011), (Blue).