

Product datasheet for **TA502709M**

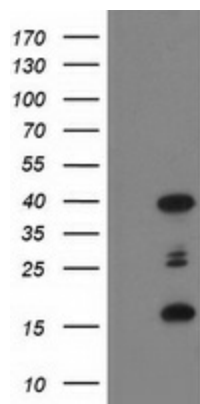
PDLIM2 Mouse Monoclonal Antibody [Clone ID: OTI1D12]

Product data:

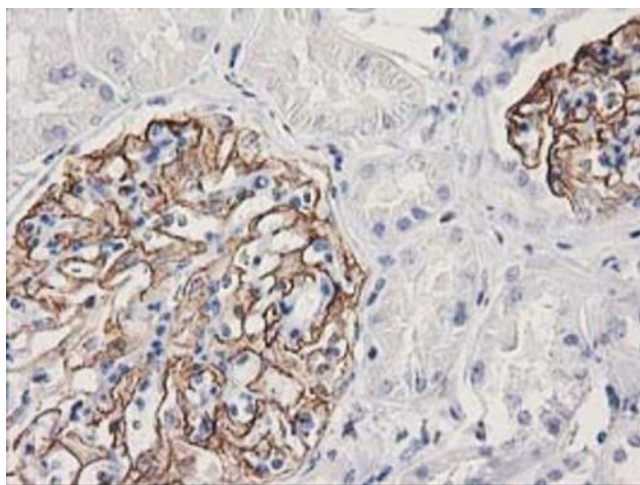
Product Type:	Primary Antibodies
Clone Name:	OTI1D12
Applications:	FC, IF, IHC, WB
Recommended Dilution:	WB 1:2000, IHC 1:150, IF 1:100, FLOW 1:100
Reactivity:	Human
Host:	Mouse
Isotype:	IgG1
Clonality:	Monoclonal
Immunogen:	Full length human recombinant protein of human PDLIM2 (NP_067643) produced in HEK293T cell.
Formulation:	PBS (pH 7.3) containing 1% BSA, 50% glycerol and 0.02% sodium azide.
Concentration:	0.68 mg/ml
Purification:	Purified from mouse ascites fluids or tissue culture supernatant by affinity chromatography (protein A/G)
Conjugation:	Unconjugated
Storage:	Store at -20°C as received.
Stability:	Stable for 12 months from date of receipt.
Predicted Protein Size:	37.3 kDa
Gene Name:	PDZ and LIM domain 2
Database Link:	NP_067643 Entrez Gene 64236 Human Q96JY6
Synonyms:	MYSTIQUE; SLIM

[View online »](#)

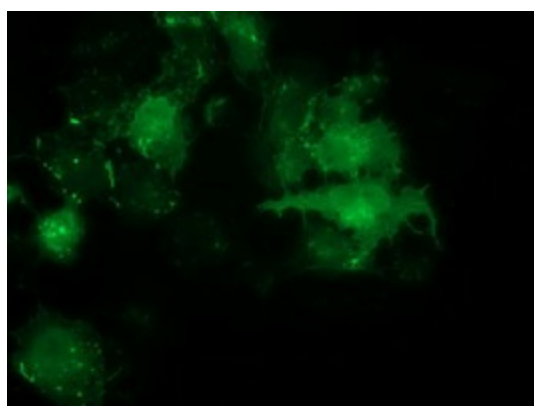
Product images:



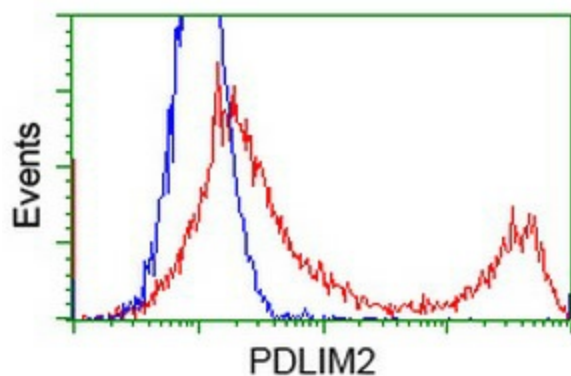
HEK293T cells were transfected with the pCMV6-ENTRY control (Left lane) or pCMV6-ENTRY PDLIM2 ([RC210022], Right lane) cDNA for 48 hrs and lysed. Equivalent amounts of cell lysates (5 ug per lane) were separated by SDS-PAGE and immunoblotted with anti-PDLIM2. Positive lysates [LY411957] (100ug) and [LC411957] (20ug) can be purchased separately from OriGene.



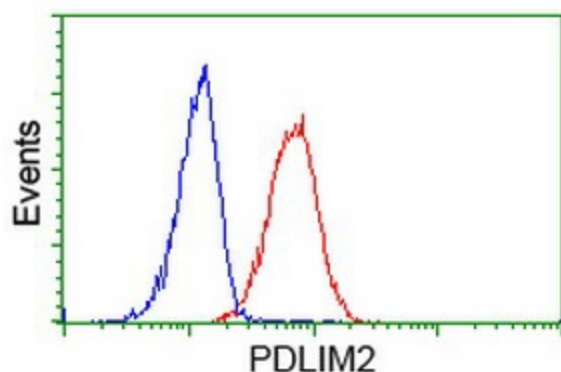
Immunohistochemical staining of paraffin-embedded Human Kidney tissue within the normal limits using anti-PDLIM2 mouse monoclonal antibody. Heat-induced epitope retrieval by EDTA solution buffer pH 8.0 at 120°C for 3 min.



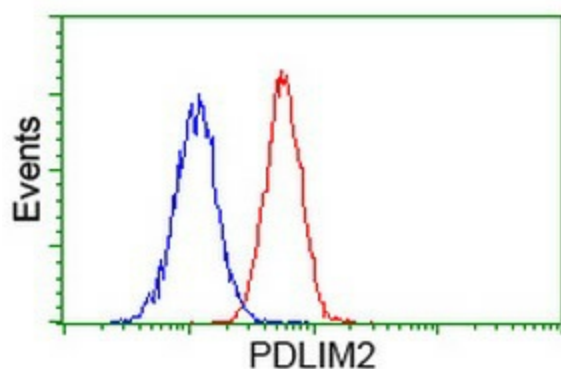
Anti-PDLIM2 mouse monoclonal antibody ([TA502709]) immunofluorescent staining of COS7 cells transiently transfected by pCMV6-ENTRY PDLIM2 ([RC210022]).



HEK293T cells transfected with either [RC210022] overexpress plasmid (Red) or empty vector control plasmid (Blue) were immunostained by anti-PDLIM2 antibody ([TA502709]), and then analyzed by flow cytometry.



Flow cytometric Analysis of HeLa cells, using anti-PDLIM2 antibody ([TA502709]), (Red), compared to a nonspecific negative control antibody (TA50011), (Blue).



Flow cytometric Analysis of Jurkat cells, using anti-PDLIM2 antibody ([TA502709]), (Red), compared to a nonspecific negative control antibody (TA50011), (Blue).