

## Product datasheet for **TA502708AM**

### **PDLIM2 Mouse Monoclonal Antibody (Biotin conjugated) [Clone ID: OTI10C4]**

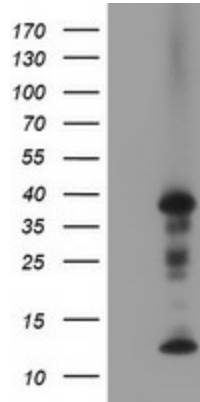
#### **Product data:**

Product Type:	Primary Antibodies
Clone Name:	OTI10C4
Applications:	IF, IHC, WB
Recommended Dilution:	WB 1:500~2000, IHC 1:150, IF 1:100
Reactivity:	Human, Dog, Monkey
Host:	Mouse
Isotype:	IgG1
Clonality:	Monoclonal
Immunogen:	Full length human recombinant protein of human PDLIM2(NP_067643) produced in HEK293T cell.
Formulation:	PBS (pH 7.3) containing 1% BSA, 50% glycerol and 0.02% sodium azide.
Concentration:	0.5 mg/ml
Purification:	Purified from mouse ascites fluids or tissue culture supernatant by affinity chromatography (protein A/G)
Conjugation:	Biotin
Storage:	Store at -20°C as received.
Stability:	Stable for 12 months from date of receipt.
Predicted Protein Size:	37.3 kDa
Gene Name:	PDZ and LIM domain 2
Database Link:	<a href="#">NP_067643</a> <a href="#">Entrez Gene 486123 Dog</a> <a href="#">Entrez Gene 708652 Monkey</a> <a href="#">Entrez Gene 64236 Human</a> <a href="#">Q96JY6</a>
Synonyms:	MYSTIQUE; SLIM

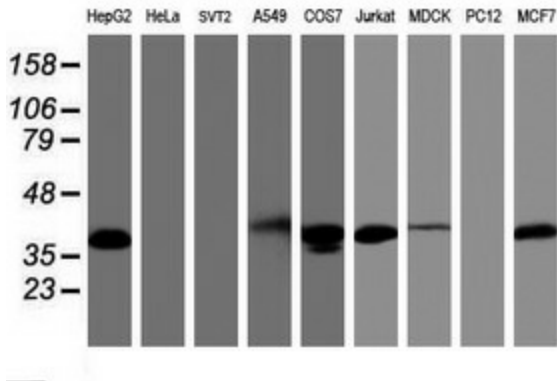


[View online »](#)

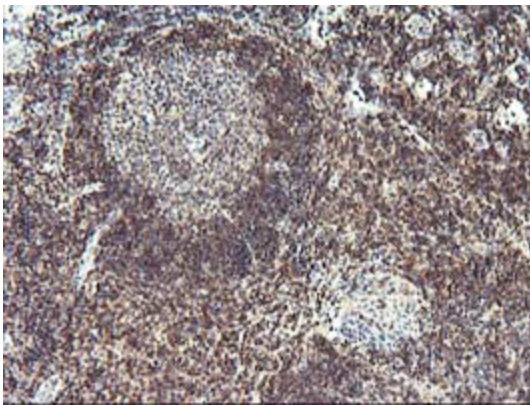
**Product images:**



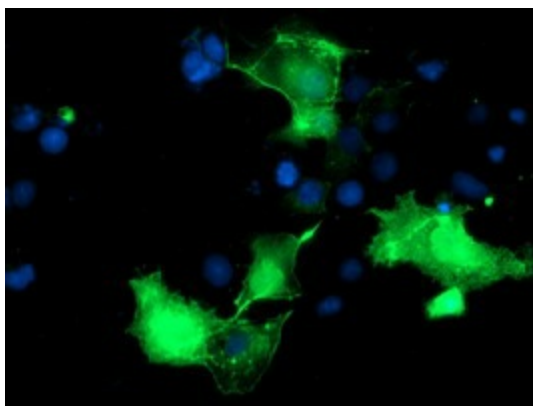
HEK293T cells were transfected with the pCMV6-ENTRY control (Cat# [PS100001], Left lane) or pCMV6-ENTRY PDLIM2 (Cat# [RC210022], Right lane) cDNA for 48 hrs and lysed. Equivalent amounts of cell lysates (5 ug per lane) were separated by SDS-PAGE and immunoblotted with anti-PDLIM2(Cat# [TA502708]). Positive lysates [LY411957] (100ug) and [LC411957] (20ug) can be purchased separately from OriGene.



Western blot analysis of extracts (35ug) from 9 different cell lines by using anti-PDLIM2 monoclonal antibody.



Immunohistochemical staining of paraffin-embedded Human tonsil within the normal limits using anti-PDLIM2 mouse monoclonal antibody. (Heat-induced epitope retrieval by 10mM citric buffer, pH6.0, 100°C for 10min, [TA502708])



Anti-PDLIM2 mouse monoclonal antibody ([TA502708]) immunofluorescent staining of COS7 cells transiently transfected by pCMV6-ENTRY PDLIM2 ([RC210022]).