

## Product datasheet for **TA502707S**

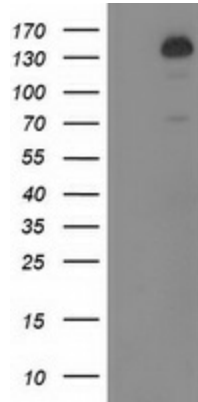
### **TBC1D4 Mouse Monoclonal Antibody [Clone ID: OT15A6]**

#### **Product data:**

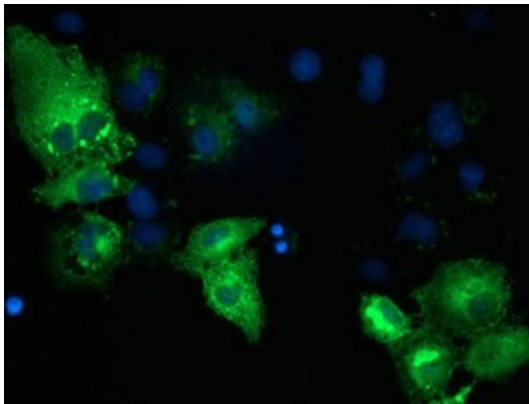
<b>Product Type:</b>	Primary Antibodies
<b>Clone Name:</b>	OT15A6
<b>Applications:</b>	FC, IF, WB
<b>Recommended Dilution:</b>	WB 1:2000, IF 1:100, FLOW 1:100
<b>Reactivity:</b>	Human, Mouse, Rat
<b>Host:</b>	Mouse
<b>Isotype:</b>	IgG2a
<b>Clonality:</b>	Monoclonal
<b>Immunogen:</b>	Full length human recombinant protein of human TBC1D4 (NP_0055647) produced in HEK293T cell.
<b>Formulation:</b>	PBS (pH 7.3) containing 1% BSA, 50% glycerol and 0.02% sodium azide.
<b>Concentration:</b>	0.41 mg/ml
<b>Purification:</b>	Purified from mouse ascites fluids or tissue culture supernatant by affinity chromatography (protein A/G)
<b>Conjugation:</b>	Unconjugated
<b>Storage:</b>	Store at -20°C as received.
<b>Stability:</b>	Stable for 12 months from date of receipt.
<b>Predicted Protein Size:</b>	146.4 kDa
<b>Gene Name:</b>	TBC1 domain family member 4
<b>Database Link:</b>	<a href="#">NP_055647</a> <a href="#">Entrez Gene 210789 Mouse</a> <a href="#">Entrez Gene 306117 Rat</a> <a href="#">Entrez Gene 9882 Human</a> <a href="#">O60343</a>
<b>Synonyms:</b>	AS160; NIDDM5



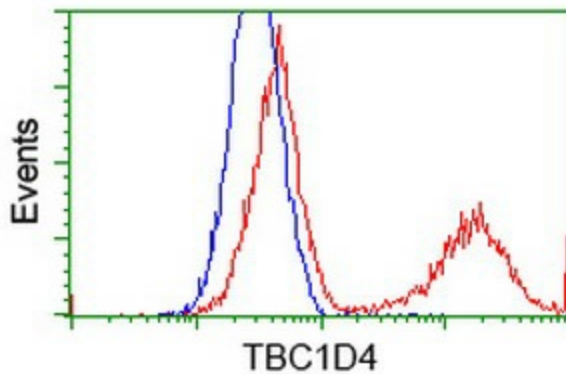
[View online »](#)

**Product images:**


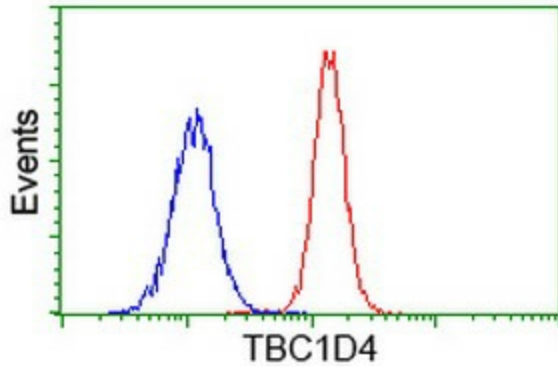
HEK293T cells were transfected with the pCMV6-ENTRY control (Left lane) or pCMV6-ENTRY TBC1D4 ([RC212105], Right lane) cDNA for 48 hrs and lysed. Equivalent amounts of cell lysates (5 ug per lane) were separated by SDS-PAGE and immunoblotted with anti-TBC1D4. Positive lysates [LY415036] (100ug) and [LC415036] (20ug) can be purchased separately from OriGene.



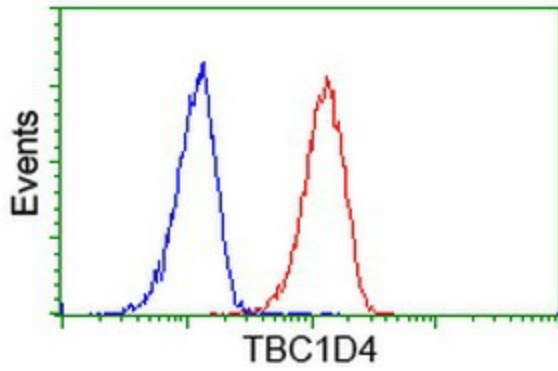
Anti-TBC1D4 mouse monoclonal antibody ([TA502707]) immunofluorescent staining of COS7 cells transiently transfected by pCMV6-ENTRY TBC1D4 ([RC212105]).



HEK293T cells transfected with either [RC212105] overexpress plasmid (Red) or empty vector control plasmid (Blue) were immunostained by anti-TBC1D4 antibody ([TA502707]), and then analyzed by flow cytometry.



Flow cytometric Analysis of Jurkat cells, using anti-TBC1D4 antibody ([TA502707]), (Red), compared to a nonspecific negative control antibody (TA50011), (Blue).



Flow cytometric Analysis of HeLa cells, using anti-TBC1D4 antibody ([TA502707]), (Red), compared to a nonspecific negative control antibody (TA50011), (Blue).